



Carlos Leon  
Commissioner Pct. 1

# Eastside Community Annex Update



**Bringing County  
Government to you!**

# Eastside Community Annex Update



The Annex will be located close to the intersection of George Dieter and Robert Wynn. Additional Land was Purchased as well for expansion.

# Eastside Community Annex

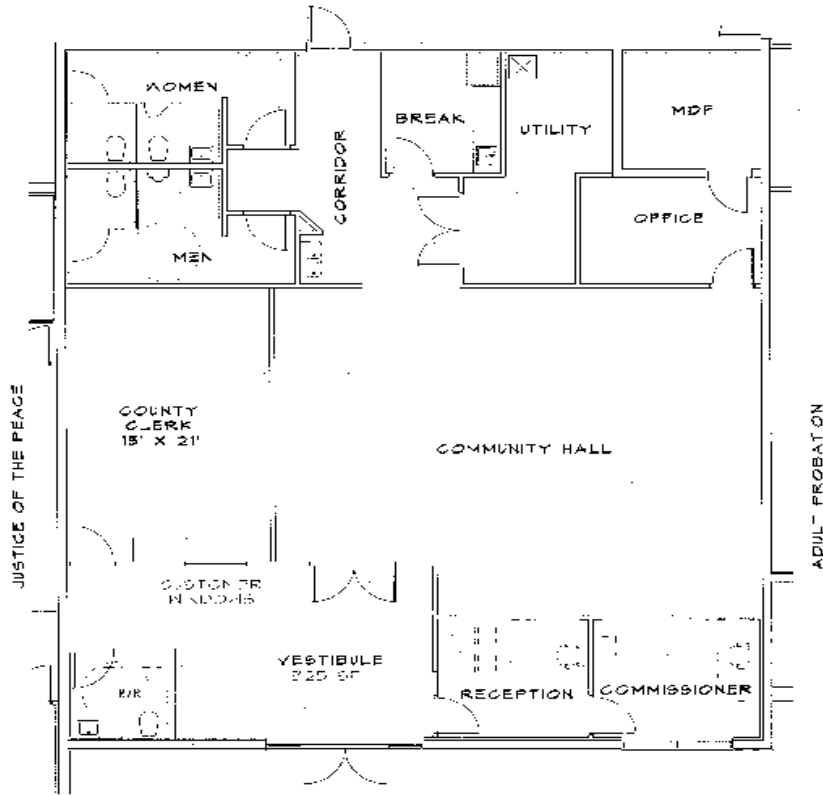
## Update

- The El Paso County Eastside Annex will have an office for:
  - Commissioner Precinct 1
  - Justice of the Peace Precinct 4
  - Constable Precinct 4
  - Adult Probation
  - County Clerk
  - And a Community Meeting Room that will have a capacity to seat 100 constituents.

# Eastside Community Annex Update

- There are Plans to Expand the Annex to Include Other County Offices
  - This may Include the County Tax Office
  - Final Determinations for Other Offices will be made in the Future

# Eastside Community Annex



32



COMMUNITY CENTER - OPTION #4, 8-22-13  
**PROPOSED FLOOR PLAN**  
EASTSIDE ANNEX  
COUNTY OF EL PASO

214