

**BID #10-088 YOUTH SERVICES CENTER
EL PASO, TEXAS**

ADDENDUM NUMBER THREE

January 3, 2011

The following constitutes changes, deletions, additions, and/or clarifications to the contract documents for the project titled herein. This addendum is hereby made a part of and shall be attached to each set of Contract Documents. The Contractor on the proposal form shall acknowledge addendum. Unless specifically modified herein, all work shall remain as indicated in the Contract Documents.

COUNTY OF EL PASO, PURCHASING - CLARIFICATIONS

1. Response to questions provided with this addendum.
 - a. **Location / quantity of bike racks:** Provide one 5-unit bicycle rack as per attached drawing AD1.01.
 - b. **Detail of shade structures:** See attached drawings AD1.01, AD1.02, AD1.03 and specifications Section 107316: Shade Canopies
 - c. **Playground layout / details:** See attached drawing AD1.01 for location and specifications Section 11 68 13 including change described below.
 - d. **Details / specs on white noise alternate:** Refer to specifications Section 27 51 19-Sound Masking System and drawings Sheet E7.00 Sound Masking Plan. Also see specification clarification in Electrical Specifications below.
 - e. **Specifications on entry mat:** Provide a recessed aluminum foot grid: Nuway Tuftiguard design with rubber wiper strips with aluminum extrusion 7/16" shallow recessed – color to be selected by architect from manufacturer's standard colors.
 - f. **Location and quantity of projection screens:** Refer to Sheet E5.00 for location. Rooms include 108, 109,166,147 and 184 for a total of 6 units. Screens to be manual operated – size to be 40" x 72" x 82" diagonal in accordance with Section 11 52 13.
 - g. **Specifications on Kiosk:** See attached Supplemental Drawing Sht AD1.04.
 - h. **Details on Alternate #6 – Etched Glazing.** See attached Supplemental Drawing AD1.05. In lieu of 1-inch glazing, provide translucent panel 1-inch thick Chroma by 3 Form or an approved equal. Etched image detail shown on Sheet AD1.05 is for general intent only. Digital format images will be provided by the architect.

- i. **Clarification on windows receiving manual roller shade as per specifications:** Provide manual roller shade as per specifications on all exterior windows except at front entrance (Rooms 102 & 103) and waiting area Room 105. Provide manual roller shade at all rooms with windows into the atrium (Room 100).
- j. **Electronic drawings and specifications available for this project?** No.
- k. **Clarification on Alternates shown of Sheet G0.00 to be included in the Bid Form (Lump Sum Contract):** List of all alternates as follows:
 - A. Alternate No. 1: Provide commissioning of all energy systems as shown on Plans and Specifications.
 - B. Alternate No 2: Provide and install steel shade and fabric structures as shown on Plans and Specifications.
 - C. Alternate No. 3: Provide and install white noise attenuation on Plans and Specifications.
 - D. Alternate No. 4: Provide and install an information kiosk as shown on Plans and Specifications.
 - E. Alternate No. 5: Provide and install outdoor playground equipment as shown on Plans and Specifications.
 - F. Alternate No. 6: Provide and install custom etched glazing in lieu of base bid glazing as shown on Plans and Specifications.

TECHNICAL SPECIFICATIONS

- 1) Section 09 51 23 ACOUSTICAL TILE CEILINGS:
 - a) Revise Paragraph 1.2 Summary as follows: delete sentence 2. Acoustical tile for clean rooms.
 - b) Revise paragraph 2.1 Manufacturers as follows:
 - i) A. Available Manufacturers: Subject to compliance with requirements, manufacturers offering products which may be incorporated in the work include, but are not limited to the following:
 - (1) Armstrong
 - (2) USG
 - (3) CertainTeed
 - c) Delete Acoustical Tile Ceiling Product Data Sheet ATC#2
- 2) Add Section 10 73 16 – SHADE CANOPIES
- 3) Add Section 08 44 13 - GLAZED ALUMINUM CURTAIN WALLS

- 4) Section 11 68 13: Revise Paragraph 2.04 PLAYGROUND EQUIPMENT Subparagraph A as follows: Provide and install PlaySense by Landscape Structures, Inc. product Design 306 Phase 1 or an approved equal.
 - 5) Section 08 71 00: Add to Paragraph 2.10 F., Stanley Access Technologies as an acceptable manufacturer.
 - 6) Section 08 71 13: Delete section in its entirety.
 - 7) Section 08 45 23 – Translucent Panel Unit Systems: Two similar titled sections are included in the Technical Specifications. Remove the unedited section (first section) and revise the second section with the following:
 - a. 1.2 Submittals, revise item B. to read “Submit shop drawings. Include elevations, details, and dimensions and attachment to other work.”
 - b. 2.3 Panel Construction to read:
 1. Thickness:
 - a. Install 1-inch at vertical panels and awnings where indicated on drawings.
 - b. Install 2-¾ -inch at vestibule and atrium roof where indicated on drawings.
- 2) Mechanical Specifications:
- a) Section 22 36 00 Solar Collector System
 - i) Page 8 Replace Paragraph 2.16.A with the following
 - (1) A. Manufacturer:
 1. PVI
 2. Substitutions: Refer to Section 01 60 00 – Material and Equipment and Section 22 05 00 – General Mechanical requirements
 - B. Page 8 Replace Paragraph 2.16.F with the following:
 - ii) 2.16.F Tank: NICKELSHIELD lined welded steel; 4 inch diameter inspection port, thermally insulated with minimum 2 inches polyurethane encased in corrosion- resistant steel jacket; baked-on enamel finish.
- 3) Electrical Specifications:
- a) Section 26 05 00 – Common Work Results for Electrical.
 - i) No requests will be considered for prior approval of proposed substitutions.
 - ii) In paragraph 1.3.B, revise the second sentence to read “All proposed substitutions on specific materials (including but not limited to low-voltage transformers, panelboards, switchboards, enclosed switches and circuit breakers, interior and exterior lighting fixtures, public address system, sound masking system, video surveillance system, intrusion system and fire alarm system) shall be submitted in a separate envelope enclosed with the bid and the design team and the contract administrator will review substitutions.”

- b) Section 26 22 00 – Low-Voltage Transformers.
 - i) In paragraph 2.1.C.2 – Windings, delete the reference to 45dBA; the sound ratings shall be per NEMA standards.
- c) Section 26 51 00 – Interior Lighting.
 - i) Fixture type U1 must match the same type furnished for the Juvenile Probation Department addition under-construction. Delete the Lithonia fixture and pole and revised the Kim catalog number as follows: fixture 1A/STL4/400PMH480/CC/TSP/SQ_POLE with pole PTSS30-62120-TS-A-CC.
- d) Section 27 51 19 – Sound Masking System
Equipment by Dynasound is acceptable for the sound masking system. The speakers for the sound masking system shall be mounted above the ceiling in plenum space for areas with lay-in or gypsum board ceilings. Speakers recessed in ceiling are not acceptable. In corridors without ceilings, the speakers shall be mounted above other equipment. The sound masking generator shall be a Dynasound #DS3008, the PoE network switch shall be a Dynasound #DS8000, the speakers shall be Dynasound #DS1356. See drawing Sht. E7.0 for areas requiring sound masking.

CONSTRUCTION DRAWINGS

1. Architectural:

- A. Supplemental Drawings AD1.01, AD1.02 and AD1.03 for shade canopies.
- B. Supplemental Drawings AD1.01 for bike racks.
- C. Supplemental Drawings AD1.01 for playground equipment location and details.
- D. Supplemental Drawings AD1.04 for Kiosk.
- E. Supplemental Drawings AD1.05 for Etched Glazing.
- F. Supplemental Drawings AD1.06 for spandrel panel information (SP1 / SP2).
- G. Supplemental Drawings AD1.07 to AD1.11 for additional information on exterior curtain wall glazing and sunshade awnings.
- H. Supplemental Drawings AD1.12 for additional information on base bid interior atrium finish work, planters, plant material, irrigation and playground equipment.
- I. Plumbing: Sheet P1.01 – Replace the “ELECTRIC WATER HEATER SCHEDULE” with the following:

ELECTRIC WATER HEATER SCHEDULE							
SYMBOL	SERVES	STORAGE	HEATING ELEMENTS	RECOVERY	TEMPERATURES		MANUFACTURER & MODEL
		GALLONS	QTY/KW	GAL/HOUR	INLET	RISE	
WH-1	BUILDING	125	3 / 4.5 KW (SEE NOTE 2)	80	60	80	PVI 70N 125A-E
<p>NOTES</p> <p>MANUFACTURER IS</p> <ol style="list-style-type: none"> 1. PVI. 2. KW RATINGS @ 480 VOLTS, 3-PHASE. ELEMENTS ARE SEQUENTIALLY OPERATED BY THERMOSTAT. 3. EACH WATER HEATER SHALL HAVE TANK INSULATION WITH A MINIMUM R-VALUE OF 20 AND SHALL MEET THE REQUIREMENTS OF ICC ENERGY CONSERVATION CODE 2000, SECTION 504.2 4. PROVIDE AND INSTALL EXPANSION TANK. TANK CAPACITY SHALL BE 2.1 GALLON. TANK SHALL BE AMTROL MODEL THERM-X-TROL ST-5 OR APPROVED EQUIVALENT. 5. WATER HEATER SHALL HAVE A COMMERCIAL WARRANTY OF 10 YEARS ON THE TANK. 							

- J. Sheet E5.0 Special System Plan – See specification Section 08 71 00 Door Hardware for access door control requirements. The hardware equipment included in this specification section for each door takes precedence over the type equipment shown on this drawing. Adjust rough-in outlet boxes to accommodate the hardware.

SECTION 10 73 16 - SHADE CANOPIES

PART 1 – GENERAL

1.1 RELATED DOCUMENTS

- A. Drawings and general provisions of the Contract, including General and Supplementary Conditions and Division 1 Specification Sections, apply to this Section.
- B. Related Sections:
 - 1. Section 03 30 00 – Concrete.

1.2 SUMMARY

- A. This Section includes the following:
 - 1. Structural steel for canopy framing.
 - 2. Hardware.
 - 3. Shade fabric.
 - 4. Warranty.

1.3 SUBMITTALS

- A. General: Submit the following according to the Conditions of the Contract and Division 1 Specifications Section.
- B. Product data for shade canopies include rough-in dimensions, details showing mounting methods, structural components, finishes and related materials.

1.4 QUALITY ASSURANCE

- A. Single-source responsibility: Obtain shade canopy materials from one source from a single manufacturer.
- B. Coordination: Field verify dimensions and location of shade canopy placement prior to installation.
- C. Performance Requirements: Shade canopy shall conform to local building codes.
- D. Delivery, Storage and Handling: Deliver and store all shade canopy components in protected areas.

PART 2 – PRODUCTS

2.1 MANUFACTURERS

- A. Available manufacturers: Subject to compliance with requirements, manufacturers offering products that may be incorporated in the Work include, but are not limited to, the following:
 - 1. Sun Ports International, Inc.
 - 2. Shade Systems, Inc.

3. EIDE Industries
4. AmeriShade
5. An approved equal

2.2 STEEL STRUCTURE

- A. The Steel Structure is designed to meet or exceed the requirements of the 1997 Uniform Building Code.
- B. All steel tubing is triple coated for rust protection using the in-line zinc electroplating. Tubing is internally coated with zinc and organic coatings to prevent corrosion.
- C. All structural steel plates are rust/corrosion treated by zinc electroplating. Steel tubing and plates are finished with a minimum of 2.5 to 3.5 mil. thick UV-inhibited weather resistant powder coat.
- D. Where size of structure or determined loads require larger structural steel members or steel greater than 7 gauge thickness, carbon steel may be substituted.
- E. All carbon Structural Steel shall be ASTM A-36, except steel pipe columns, which shall be ASTM A-53, grade B, unless otherwise noted. Slip fittings are manufactured using drawn-over-mandrel steel with minimum yield strength of 70 ksi and a minimum tensile strength of 80 ksi.
- F. Steel telescoped sleeves do not have more than 1/16" tolerance, with no less than 4--inch overlap at all sleeves. All internal fittings are welded on one side.
- G. Structural steel is detail, fabricated, and erected in accordance with AISC specifications.
- H. All shop and field welding is executed by certified welders in accordance with the latest edition of the American Welding Society specifications.
- I. Shop connections are welded unless noted otherwise. Field connections are separately indicated on all drawings.
- J. All welds are performed using E70 electrodes or gas-metal arc welding using ER 7053 wire. All fillet welds are a minimum 3/16" unless otherwise noted. All steel shall be welded shut at terminations to prevent internal leakage.

2.3 CONCRETE ANCHORS

- A. On existing concrete slab use Hilti Stainless Steel/SS with a minimum of 3 ½-inch embedment. Epoxy anchor system used in accordance with ICBO #5193.
- B. Cast in-place anchors are A-36 steel for installation on new footings.

2.4 REINFORCEMENT STEEL

- A. All Reinforcement conforms to 60,000psi ASTM A-42 Grade 60 (excludes super spans and tension cable structures). Reinforcement steel, if required, is designed, detailed, fabricated and placed in accordance with the latest ACI Detailing Manual (SP-66) and CRSI Manual of Standard Practice

2.5 HARDWARE

- A. All hardware shall be of first grade stainless steel. All bolt fittings shall include nylon washers for watertight seals at all joints.
- B. Wire rope shall be of a ¼" nominal diameter, 7 strand, 19 wires per strand (minimum), with a minimum nominal tensile strength of 9,000 pounds. Wire rope shall be secured with approved fittings and cable hardware, as per manufacturers' specifications.
- C. All erection bolts are ASTM A-307 grade B, treated to retard corrosion, or stainless steel.

2.6 CLOTH SPECIFICATIONS

- A. Cloth shall meet thread-PTFE (TEFLON®) specifications. All thread used shall meet or exceed the following requirements:
 - 1. High strength.
 - 2. Low shrinkage.
 - 3. Wide temperature range.
 - 4. Flex & abrasion resistant and UV radiation Immunity.
 - 5. Thread shall be guaranteed to meet or exceed the fabric's lifetime
 - 6. Cloth shall be unaffected by cleaning agents, acid rain, mildew, rot, chlorine, saltwater, and industrial pollutants.
 - 7. Lockstitch thread shall be 1200 denier.
 - 8. Chainstitch Thread shall be 2400 denier.

2.7 SEWING SPECIFICATIONS

- A. All corners to be strengthened with 16oz. non-tear vinyl material. Protective webbing shall be sewn into all areas where steel cable enters/ exits cloth pockets.

2.8 FABRIC SPECIFICATIONS

- A. Fabric materials shall meet or exceed the following requirements:

1. Raw Material	High Density Polyethylene with Ultra Violet additives.	
2. Construction	A monofilament and tape construction giving a stable material. Rachel knitted to ensure material will not unravel if cut.	
	SOLID COLORS	STRIPE COLORS
3. Finish	Fabric is stentored.	Fabric is stentored.
	Warp 220.4622 lb.	Warp 182.9836 lb.
4. Tear Strength	Weft 462.9707 lb.	Weft 401.2413 lb.
5. Burst Strength	37.7098 PSIA	33.0686 PSIA
6. Fabric Mass	6.8784 ozm	7.0547 ozm

7. Fabric Width	9.8425 ft.	9.8425 ft.
8. Roll Length	164.04 ft.	164.04 ft.
Roll Dimensions	62.99" X 16.5354"	62.99" X 16.5354"
Roll Weight	+/- 66 lb.	+/- 68.34 lb.
Life Expectancy	A minimum of 8 years continuous exposure to the sun	
Fading	Minimum fading after 5 years.	
Minimum Temperature	- 22° F	- 22° F

PART 3 – EXECUTION

3.1 INSPECTION

- A. Confirm that surrounding area is ready for the shade canopy structure installation.
- B. Installer shall confirm dimensions and elevations to be as shown on drawings provided by the manufacturer.
- C. Erection shall be performed by an approved installer and scheduled after all related work has been completed.

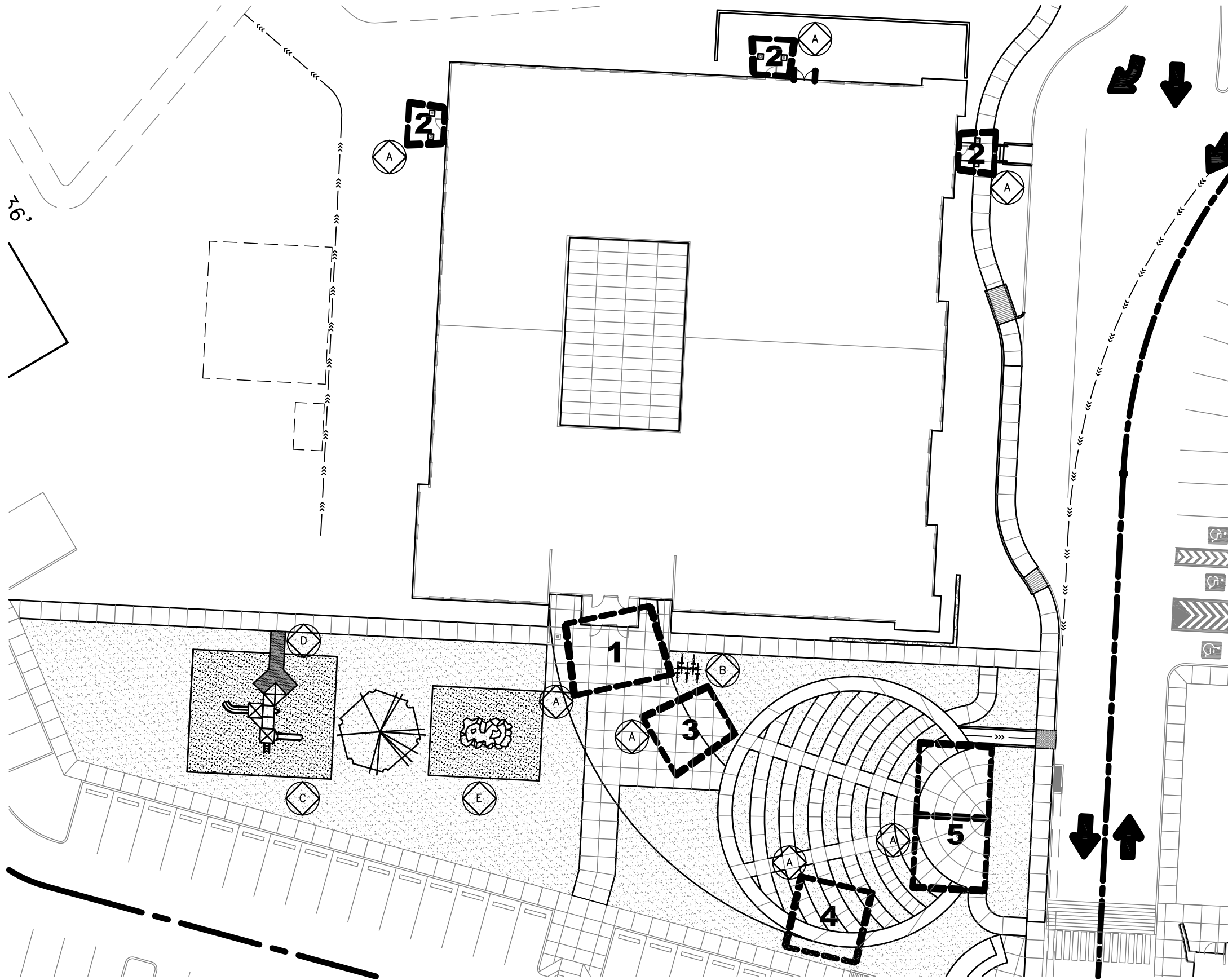
3.2 INSTALLATION

- B. Installation shall be in strict accordance with the manufacturer's shop drawings. Particular attention should be given to protecting the finish during handling and erection.
- C. After installation, entire system shall be left in a clean condition.

3.3 WARRANTY

- A. Steel Structure: shall be covered by a 20-year warranty against failure of the structure and a one-year paint warranty
- B. Fabric: shall be covered by a full 6-year warranty against significant fading, tearing, ripping and/or discoloration. Contractor shall notify the Architect on exceptions or modifications to warranty period determined by the manufacturer.

END OF SECTION 10 73 16



SITE KEYED NOTES

- (A) PREFABRICATED CANOPIES
RE: AD1.02 & AD1.03
- (B) BICYCLE RACK
DERO MODEL RR2H OR
APPROVED EQUAL.
INGROUND MOUNT
- (C) PLAYGROUND EQUIPMENT
LANDSCAPE STRUCTURES
DESIGN 306, PHASE 1.
PROVIDE A 40' x 34' FALL
ZONE COMPRISED OF 12"
DEPTH WOOD MULCH. WITH
BEVELED PLASTIC EDGING
AROUND PERIMETER.
- (D) HANDICAP ACCESSIBLE WALK
TO PLAY STRUCTURE..
PROVIDE POURED IN PLACE
SAFETY SURFACING ONCE
INSIDE FALL ZONE
- (E) LANDSCAPE STRUCTURES
8' x 14' CLIMBING ROCK.
PROVIDE FALL ZONE TO BE
COMPRISED OF A 12" DEPTH
OF WOOD MULCH. WITH
BEVELED PLASTIC EDGING
AROUND PERIMETER.

080559
12.29.10

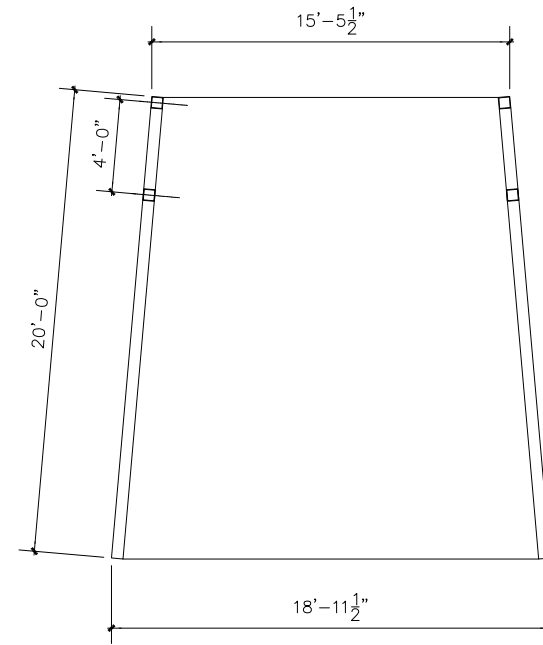
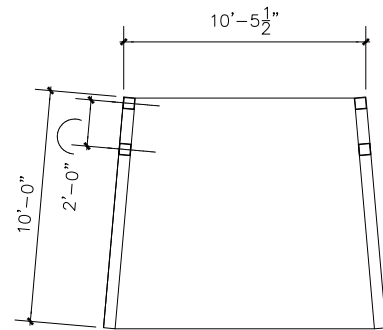
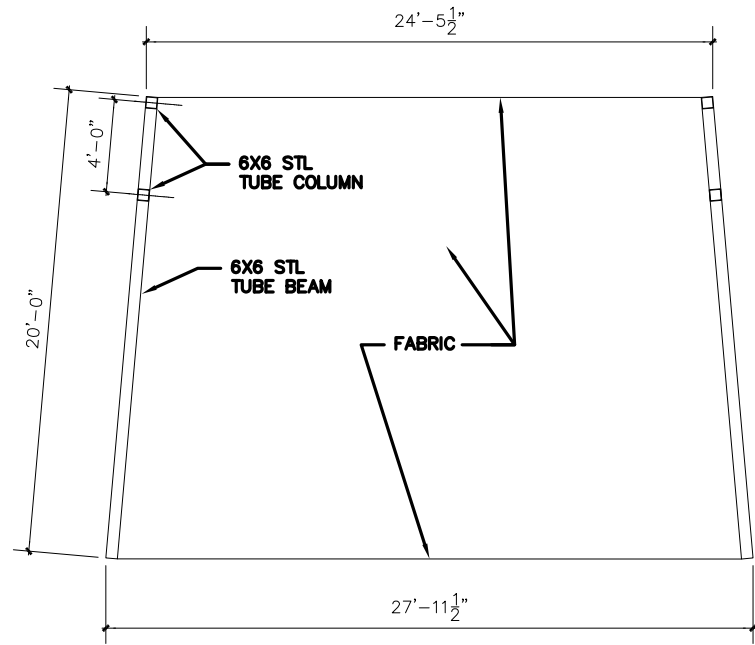
YOUTH SERVICES CENTER
 6400 DELTA DRIVE, EL PASO, TEXAS
ADDENDUM #3

WRIGHT & DALBIN
 ARCHITECTS P.C.
 2117 Marquess Dr.
 El Paso, Texas 79902
 Ph: (915) 533-5777 Fax: (915) 533-7753
 www.wrightanddalbin.com

AD1.01
RE:AC1.01
 SHEET 01 OF 11

01 CANOPY, BIKE RACK AND PLAYGROUND LOCATIONS
 SCALE: 30' = 1'-0"
 NOTE: CANOPIES #1 & 2 ARE PART OF THE BASE BID

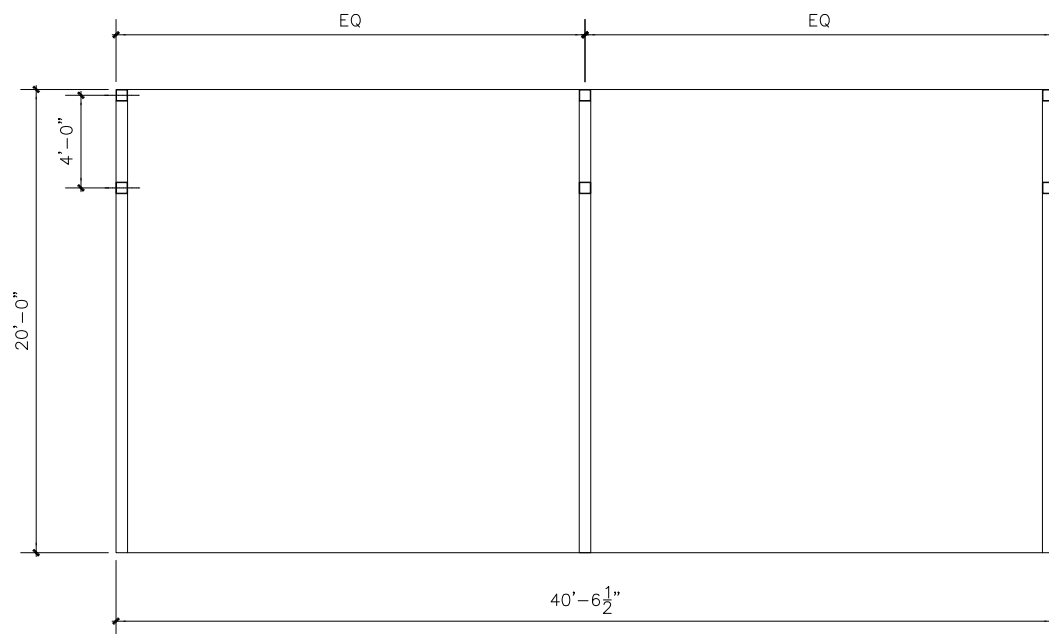
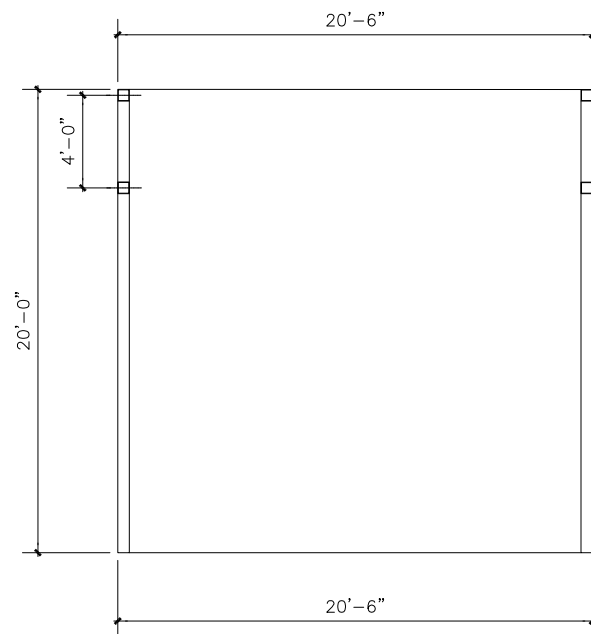




01 CANOPY #1
SCALE: 3/16" = 1'-0"

02 CANOPY #2
SCALE: 3/16" = 1'-0"

03 CANOPY #3
SCALE: 3/16" = 1'-0"



04 CANOPY #4
SCALE: 3/16" = 1'-0"

05 CANOPY #5
SCALE: 3/16" = 1'-0"

NOTE: CANOPIES #1 & 2 ARE PART OF BASE BID

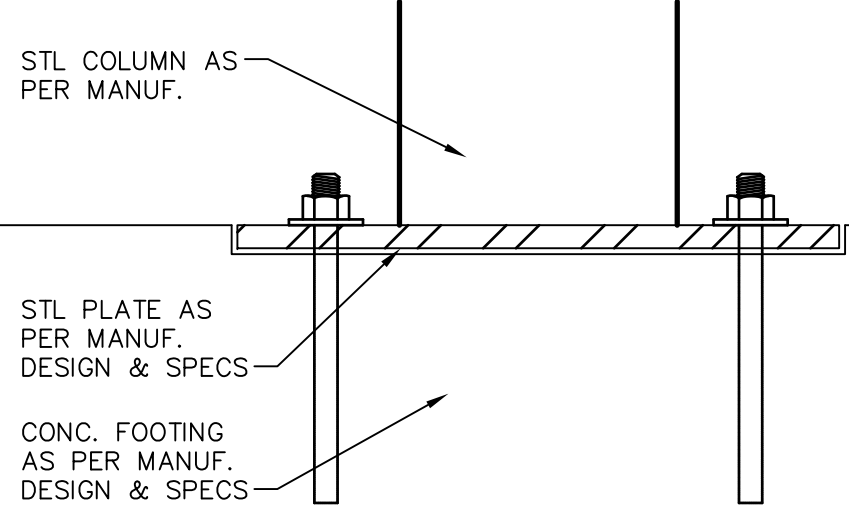
YOUTH SERVICES CENTER
6400 DELTA DRIVE, EL PASO, TEXAS
ADDENDUM #3

WRIGHT & DALBIN
ARCHITECTS
P.C.
El Paso, Texas 79900
2112 Marbach Dr.
Ph: (915) 533-3777 Fax: (915) 532-7733
www.wrightdalbin.com

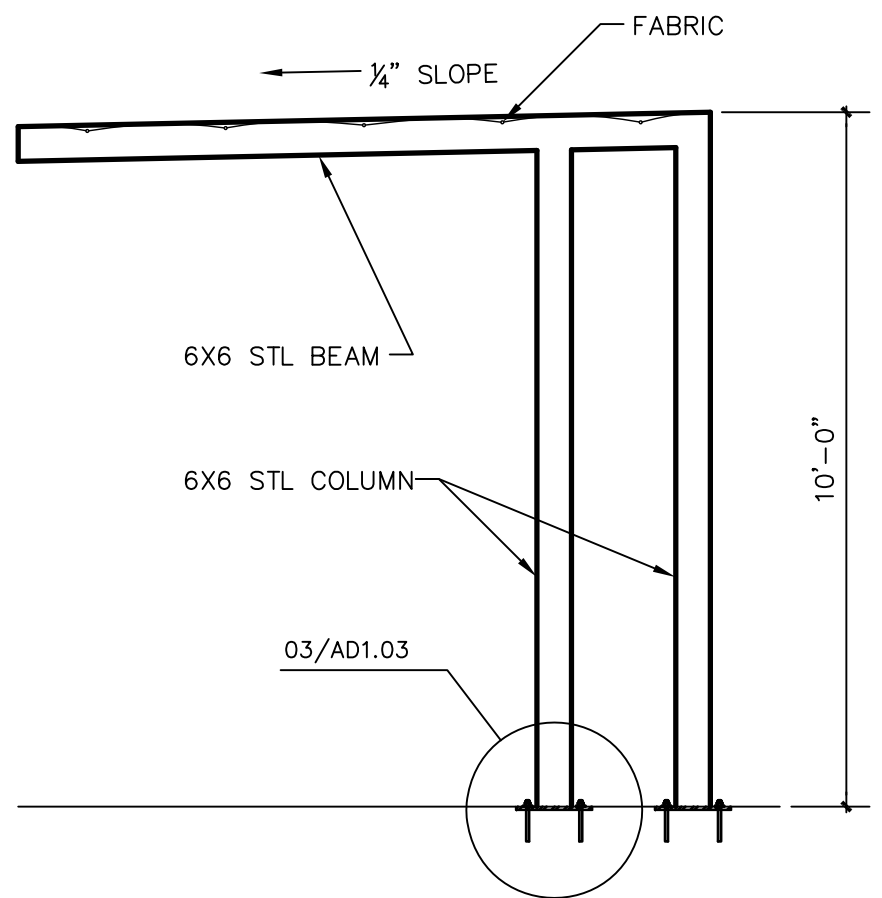


AD1.02
RE:AD1.01

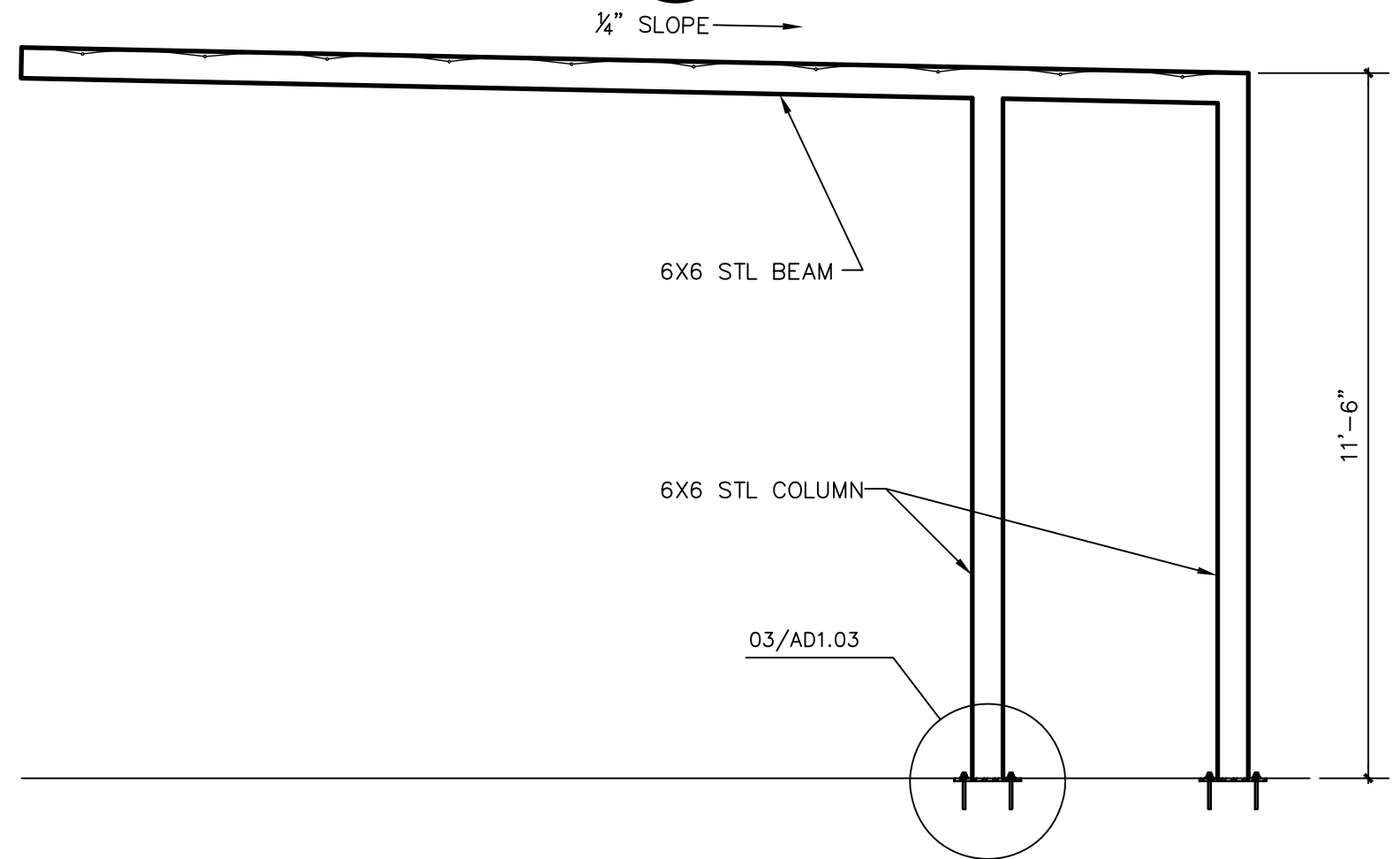
080559
12.29.10



03 DETAIL
SCALE: 3" = 1'-0"



01 ELEVATION / SECTION #2
SCALE: 3/8" = 1'-0"



01 ELEVATION / SECTION #1, 3, 4 & 5
SCALE: 3/8" = 1'-0"

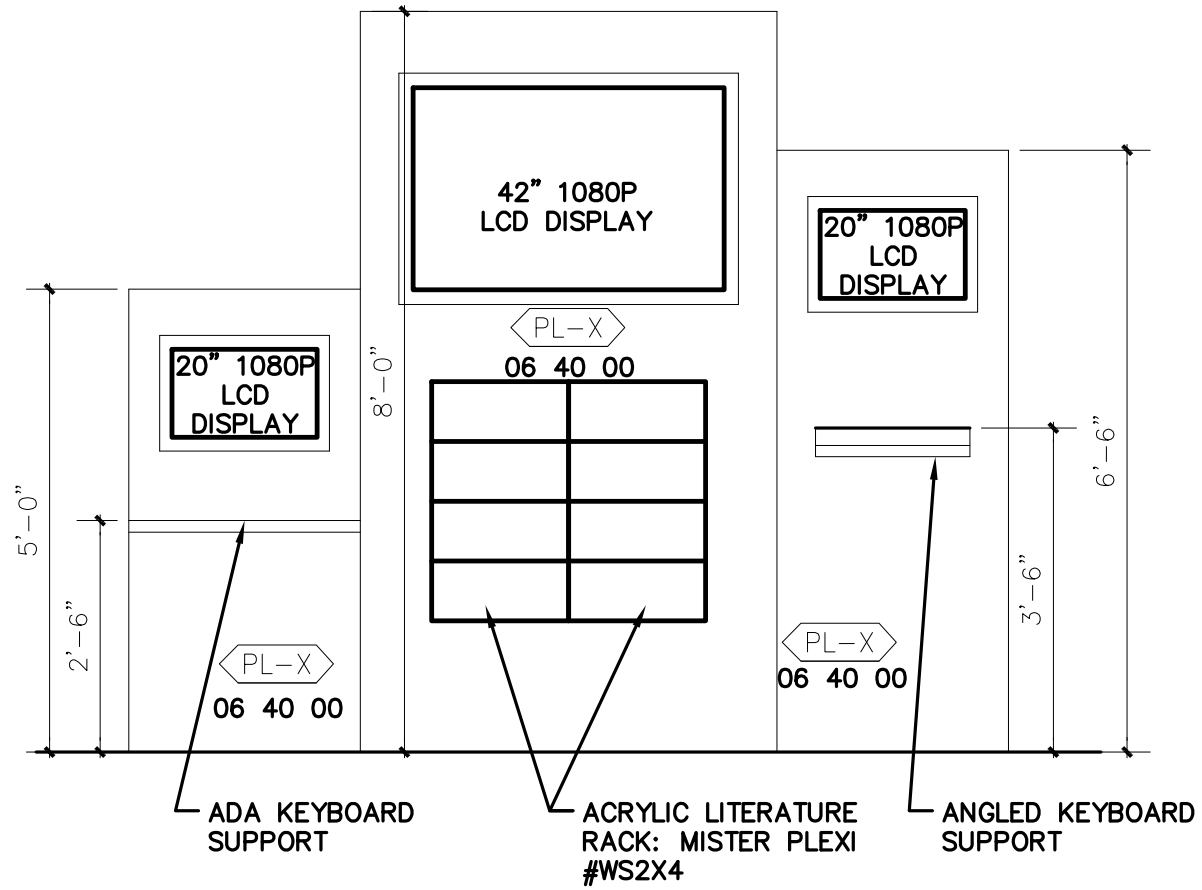
NOTE: CANOPIES #1 & 2 ARE PART OF BASE BID

YOUTH SERVICES CENTER
6400 DELTA DRIVE, EL PASO, TEXAS
ADDENDUM #3

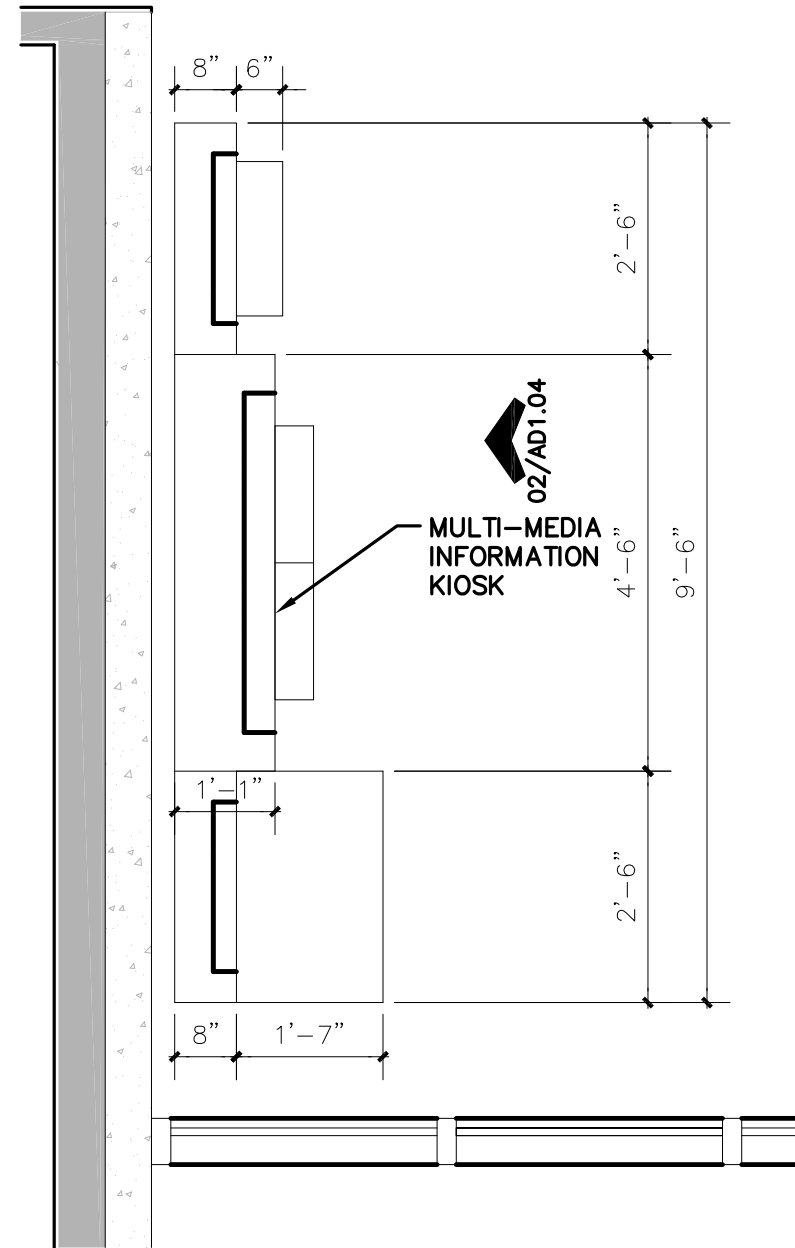
WRIGHT & DALBIN
ARCHITECTS
P.C.
El Paso, Texas 79900
2112 Marbach Dr.
El Paso, TX 79903-3777
Ph: (915) 533-3777 Fax: (915) 532-7733
www.wrightdalbin.com



AD1.03
RE:AD1.02

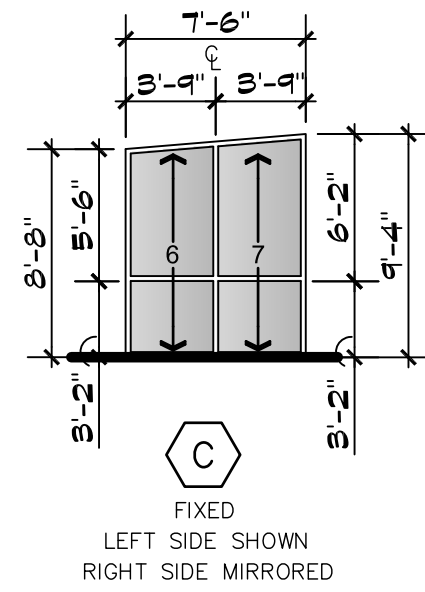
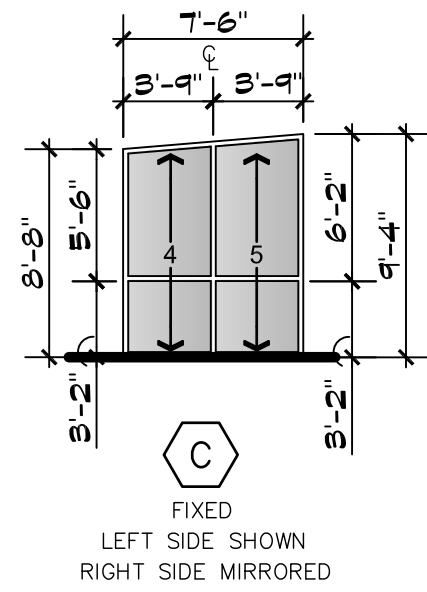
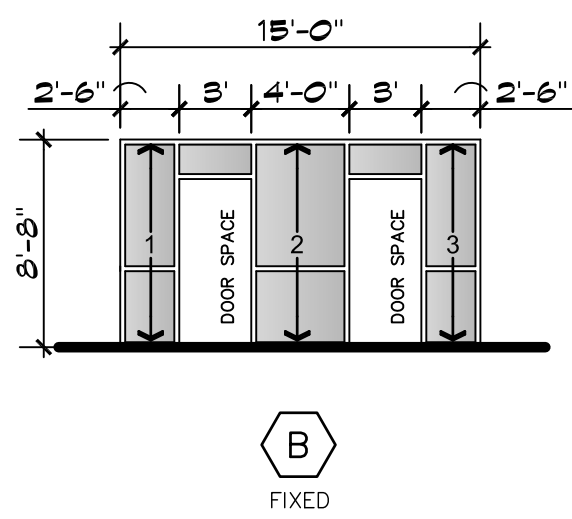


02 INFORMATION KIOSK
SCALE: 1/2" = 1'-0"

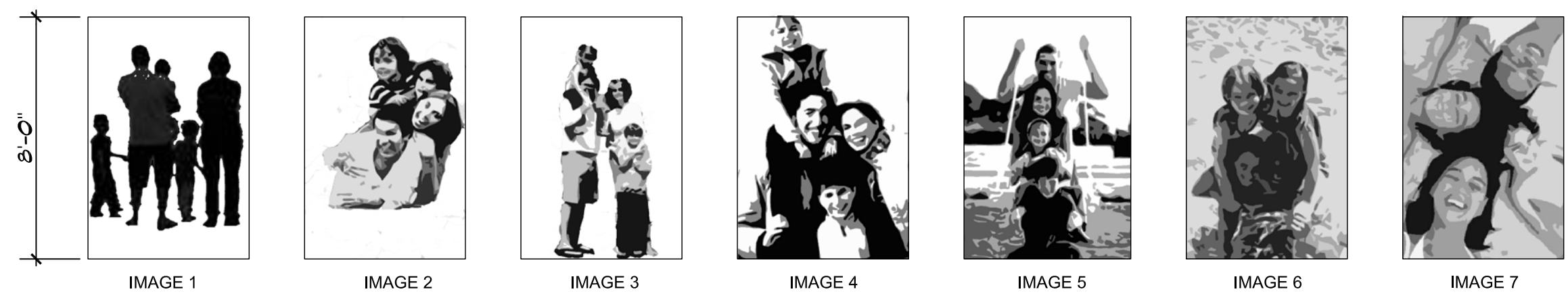


01 INFORMATION KIOSK
SCALE: 1/2" = 1'-0"





NOTE: IN LIEU OF 1" LOW E GLAZING, PROVIDE 1" THICK TRANSLUCENT PANELS: "CHROMA" BY 3FORM (CADRE DESIGN CONSULTANTS, GERALD FORNELL 505.466.2612) OR APPROVED EQUAL. PROVIDE LASER ETCH WITH A FROSTED FINISH. IMAGES SHOWN ARE FOR GENERAL INTENT; FINAL DIGITAL FORMAT WILL BE COORDINATED WITH SUPPLIER AND PROVIDED BY ARCHITECT.



01 ALTERNATE #6 ETCHED GLAZING
SCALE: NTS



YOUTH SERVICES CENTER
 6400 DELTA DRIVE, EL PASO, TEXAS
 ADDENDUM #3

WRIGHT & DALBIN
 ARCHITECTS
 El Paso, Texas 79930
 2112 Murchison Dr.
 Ph: (915) 533-3777
 Fax: (915) 532-7733
 www.wrightdalbin.com

AD1.05
RE:A2.01
 SHEET 05 of 11

PL4	PLASTIC LAMINATE	FORMICA	NEUTRAL WHITE	918-58	-	FORMICA 800.FORMICA	MATTE FINISH
PL5	PLASTIC LAMINATE	NEVAMAR	LIBERTY RED	S1027T	-	PANOLAM INDUSTRIES 800.243.4380	TEXTURED
PL6	PLASTIC LAMINATE	FORMICA	METAL OCEAN	3511-58	-	FORMICA 800.FORMICA	MATTE FINISH
PL7	PLASTIC LAMINATE	FORMICA	COCOA LEATHER	3515-58	-	FORMICA 800.FORMICA	MATTE FINISH
ACT1	LAY-IN CEILING TILE	ARMSTRONG	CIRRUS SECOND LOOK II #510	WHITE	24"X48"	ARMSTRONG 877.ARMSTRONG	9/16" GRID - WHITE
CM1	CORRUGATED METAL	CORRUGATED METALS, INC.	ALUMINUM	CLEAR ANODIZED	2.67"X1/2"X.040"	CORRUGATED METALS, INC. 800.621.5617	-
AP1	ACOUSTIC PANEL	ACOUSTICAL SURFACES, INC.	HIGH IMPACT	DESERT 0035	1" THICK	ACOUSTICAL SURFACES, INC. KEITH JOHNSON 800.854.2948 X8213	WRAPPED FRONT & BACK
AP2	ACOUSTIC PANEL	ACOUSTICAL SURFACES, INC.	HIGH IMPACT	PUMPKIN - 0025	1" THICK	ACOUSTICAL SURFACES, INC. KEITH JOHNSON 800.854.2948 X8213	WRAPPED FRONT & BACK
TP1	TRANSLUCENT PANEL	3 FORM	CHROMA	MAITAI	1"THICK	CADRE DESIGN CONSULTANTS GERAL FORNELL 505.466.2612	-
TP2	TRANSLUCENT PANEL	3 FORM	CHROMA	CRANBERRY	1"THICK	CADRE DESIGN CONSULTANTS GERAL FORNELL 505.466.2612	-
TP3	TRANSLUCENT PANEL	3 FORM	CHROMA	MOSS	1"THICK	CADRE DESIGN CONSULTANTS GERAL FORNELL 505.466.2612	-
TP4	TRANSLUCENT PANEL	3 FORM	CHROMA	T.B.D	1"THICK	CADRE DESIGN CONSULTANTS GERAL FORNELL 505.466.2612	RE: ALTERNATE #6 CUSTOM ETCHED
SP1	SPANDREL PANEL	HIGH STANDARD INC.	ANODIZED ALUMINUM	T.B.D	.040" BOTH SIDES W/ 1" HARDBOARD	HIGH STANDARD INC. 800.358.8018	-
SP2	SPANDREL PANEL	HIGH STANDARD INC.	ANODIZED ALUMINUM	T.B.D	.040" BOTH SIDES W/ 1" HARDBOARD	HIGH STANDARD INC. 800.358.8018	-

1

01 FINISH SCHEDULE
SCALE: N/A

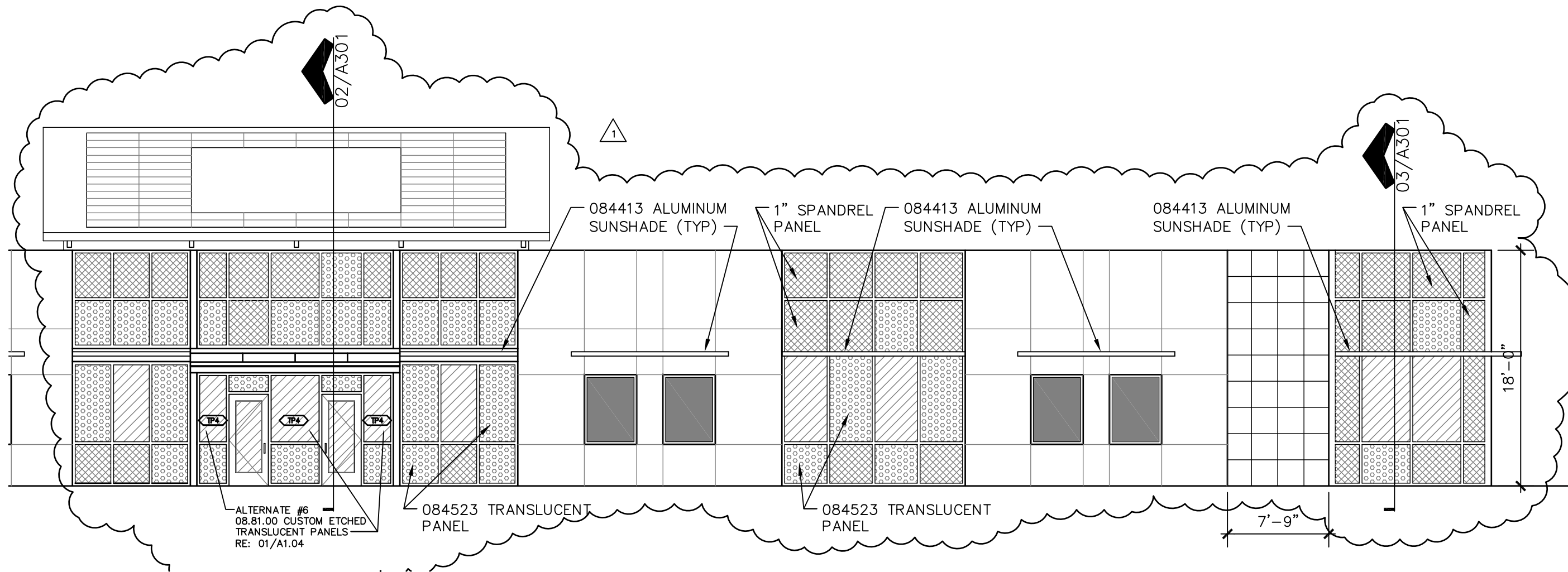
080559
12.29.10

YOUTH SERVICES CENTER
6400 DELTA DRIVE, EL PASO, TEXAS
ADDENDUM #3



WRIGHT & DALBIN
ARCHITECTS
2111 Maricopa Dr.
El Paso, Texas 79906
Ph: (915) 532-5777 Fax: (915) 532-7733
www.wrightdalbin.com

AD1.06
RE:A1.04
SHEET 06 OF 11



YOUTH SERVICES CENTER
6400 DELTA DRIVE, EL PASO, TEXAS

ADDENDUM #3

WRIGHT & DALBIN
ARCHITECTS
2115 MARKET ST.
EL PASO, TEXAS 79903
PH: 915.533.0777
FAX: 915.532.7733
WWW.WRIGHTDALBIN.COM

AD1.07
RE:A2.01

SHEET 07 OF 11

01 SOUTH ELEVATION
SCALE: 1/8" = 1' - 0"

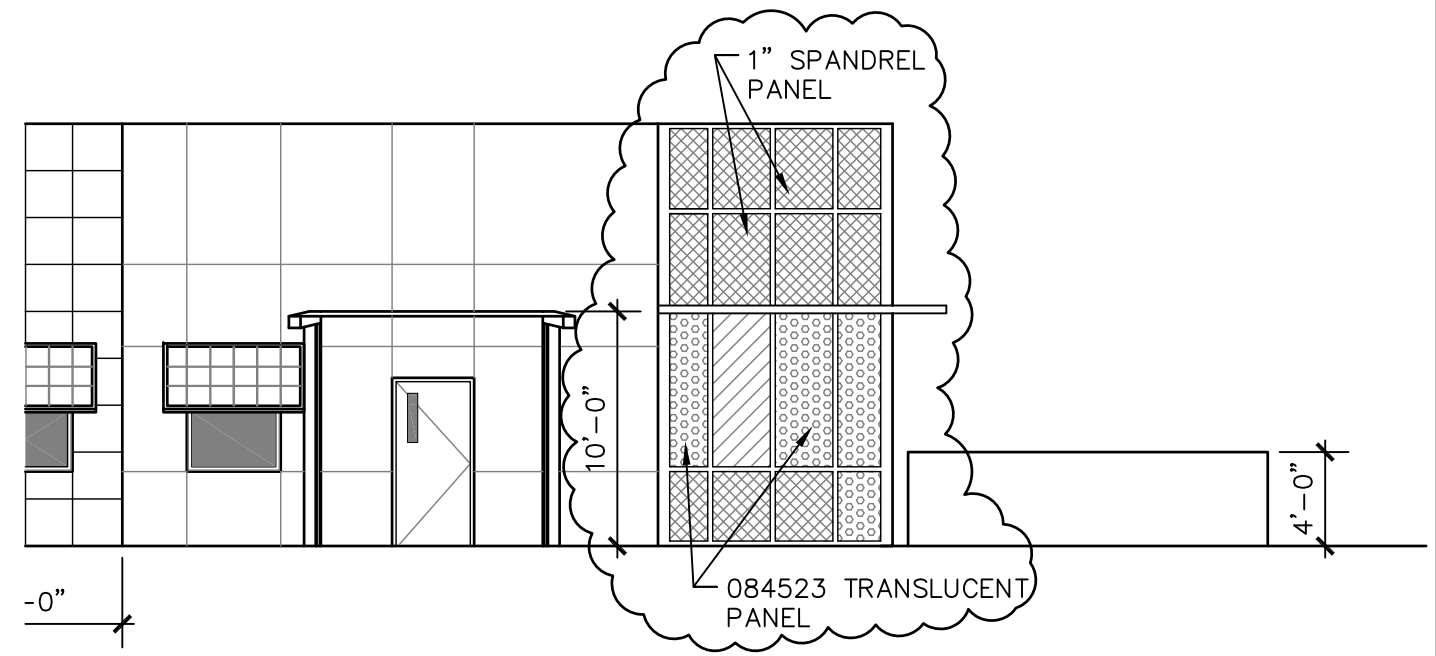
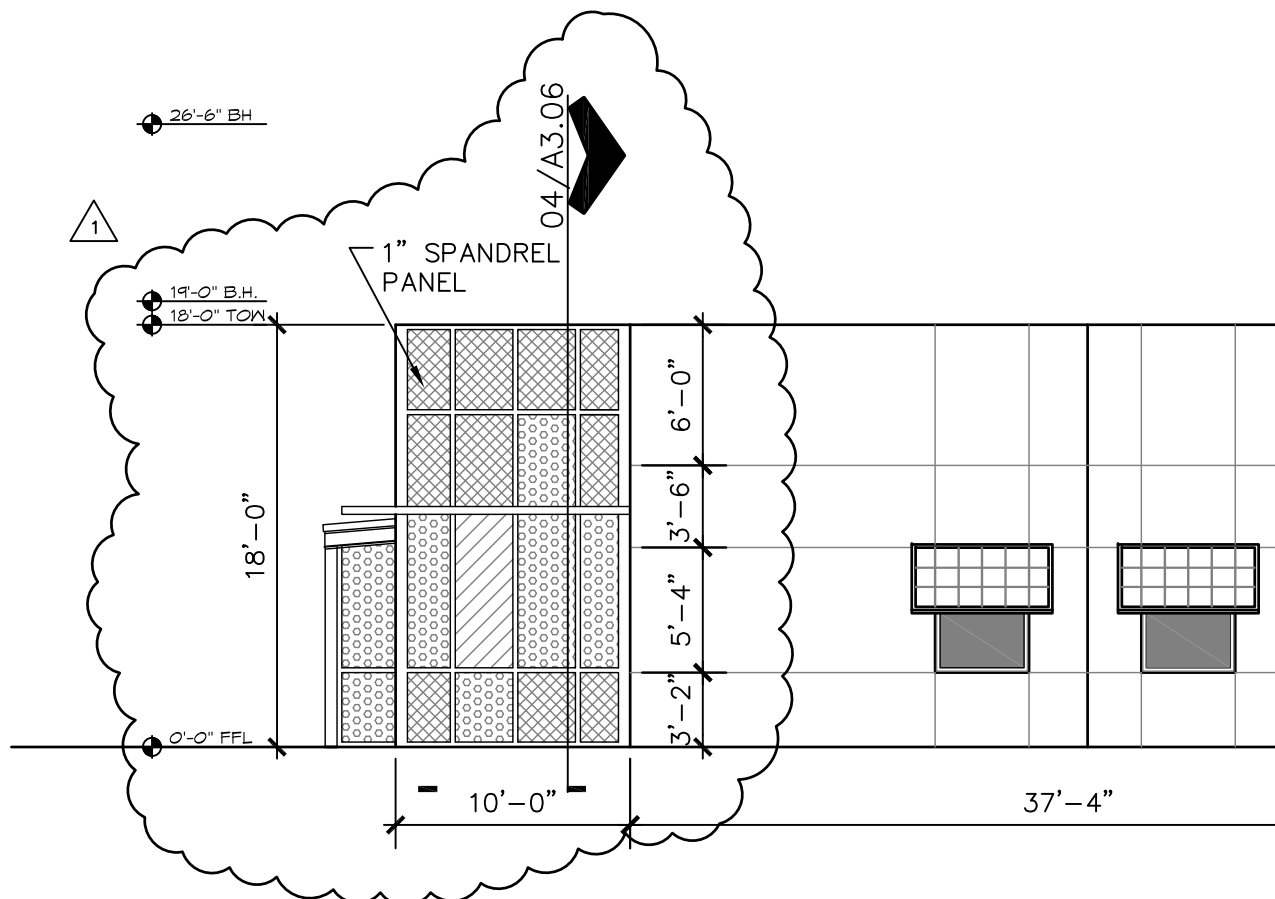
GLAZING LEGEND

GLASS	TRANSLUCENT PANEL	SPANDREL PANEL

NOTE: TRANSLUCENT & SPANDREL PANELS SELECTED WILL HAVE FOUR (4) COLORS MIN. FROM MANUFACTURER'S STANDARD CHART

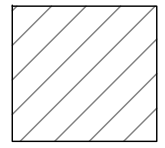
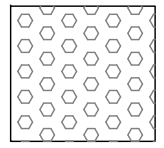
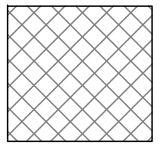
1" SPANDREL PANELS WILL BE FIVE PLY CONSISTING OF THE FOLLOWING MATERIALS:
FACE MATERIAL: .040 ALUMINUM, SMOOTH FINISH
FACE SUBSTRATE: 4MM CORRUGATED PLASTIC
INSULATING CORE: 2.05LB DENSITY POLYISOCYANURATE
BACK SUBSTRATE: 4MM CORRUGATED PLASTIC
BACK MATERIAL: .040 ALUMINUM, SMOOTH FINISH
MANUFACTURER: HIGH STANDARD INC. O.A.E.





02 EAST ELEVATION
SCALE: 1/8" = 1' - 0"

GLAZING LEGEND

		
GLASS	TRANSLUCENT PANEL	SPANDREL PANEL

NOTE: TRANSLUCENT & SPANDREL PANELS SELECTED WILL HAVE FOUR (4) COLORS MIN. FROM MANUFACTURER'S STANDARD CHART

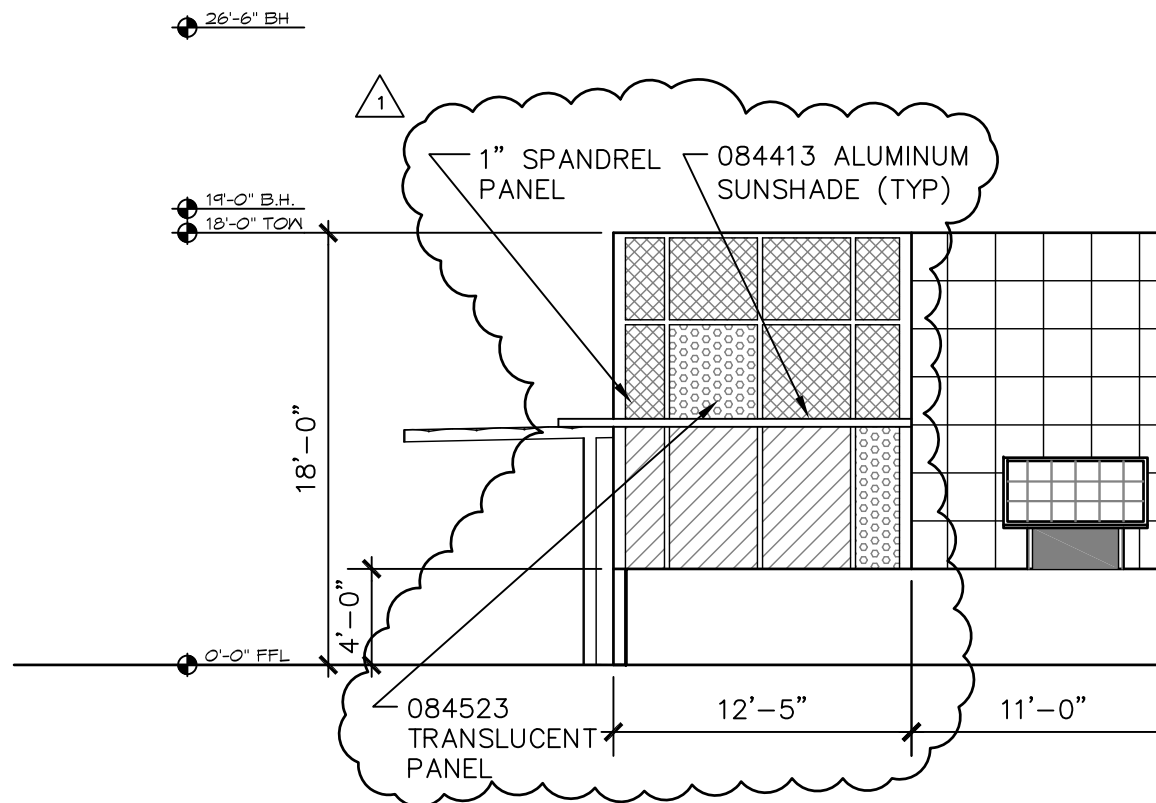
1" SPANDREL PANELS WILL BE FIVE PLY CONSISTING OF THE FOLLOWING MATERIALS:
 FACE MATERIAL: .040 ALUMINUM, SMOOTH FINISH
 FACE SUBSTRATE: 4MM CORRUGATED PLASTIC
 INSULATING CORE: 2.05LB DENSITY POLYISOCYANURATE
 BACK SUBSTRATE: 4MM CORRUGATED PLASTIC
 BACK MATERIAL: .040 ALUMINUM, SMOOTH FINISH
 MANUFACTURER: HIGH STANDARD INC. O.A.E.



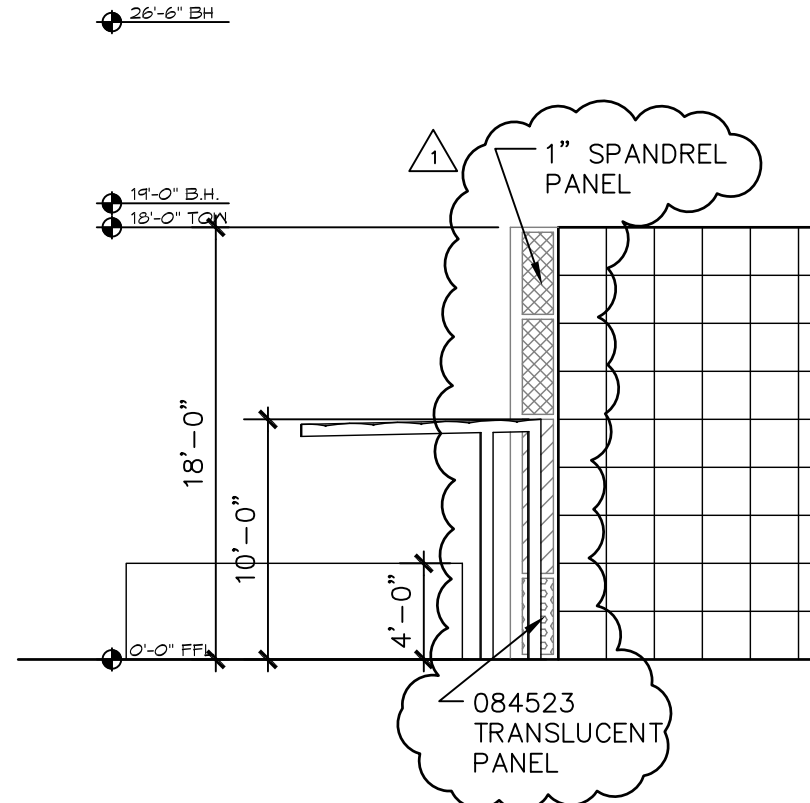
YOUTH SERVICES CENTER
 6400 DELTA DRIVE, EL PASO, TEXAS
ADDENDUM #3

WRIGHT & DALBIN
 ARCHITECTS
 2115 MARKET ST.
 EL PASO, TEXAS 79903
 PH: 915/533-0771
 FAX: 915/532-7733
 WWW.WRIGHTDALBIN.COM

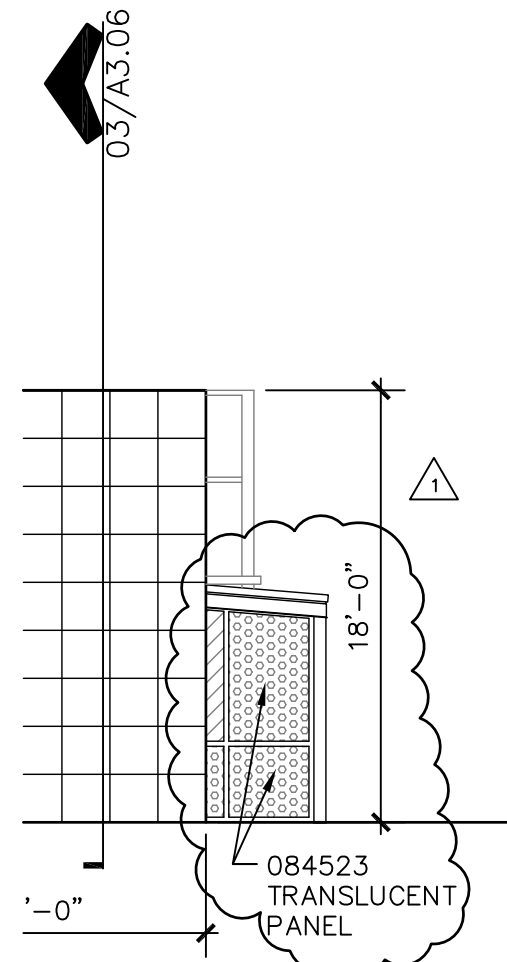
AD1.08
RE:A2.01
 SHEET 07 OF 11



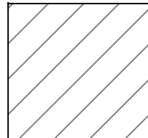
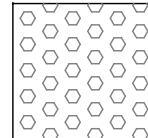
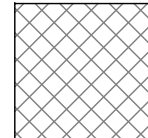
02 WEST ELEVATION
SCALE: 1/8" = 1' - 0"



01 NORTH ELEVATION
SCALE: 1/8" = 1' - 0"



GLAZING LEGEND

		
GLASS	TRANSLUCENT PANEL	SPANDREL PANEL

NOTE: TRANSLUCENT & SPANDREL PANELS SELECTED WILL HAVE FOUR (4) COLORS MIN. FROM MANUFACTURER'S STANDARD CHART

1" SPANDREL PANELS WILL BE FIVE PLY CONSISTING OF THE FOLLOWING MATERIALS:
 FACE MATERIAL: .040 ALUMINUM, SMOOTH FINISH
 FACE SUBSTRATE: 4MM CORRUGATED PLASTIC
 INSULATING CORE: 2.05LB DENSITY POLYISOCYANURATE
 BACK SUBSTRATE: 4MM CORRUGATED PLASTIC
 BACK MATERIAL: .040 ALUMINUM, SMOOTH FINISH
 MANUFACTURER: HIGH STANDARD INC. O.A.E.

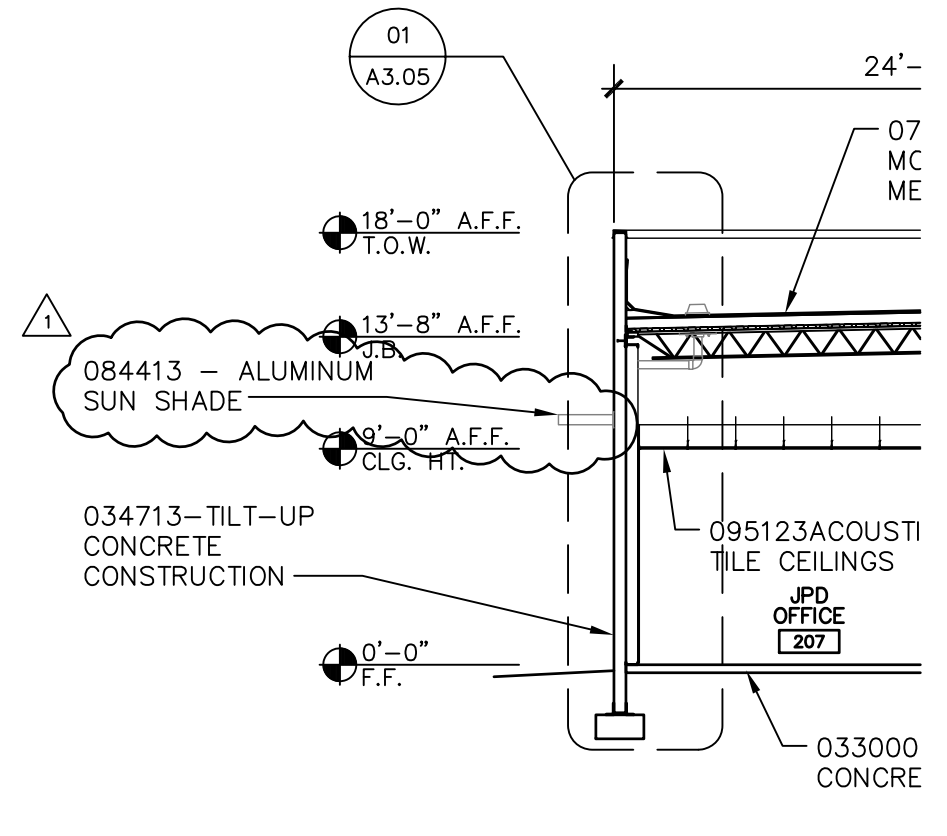


080559
12.29.10

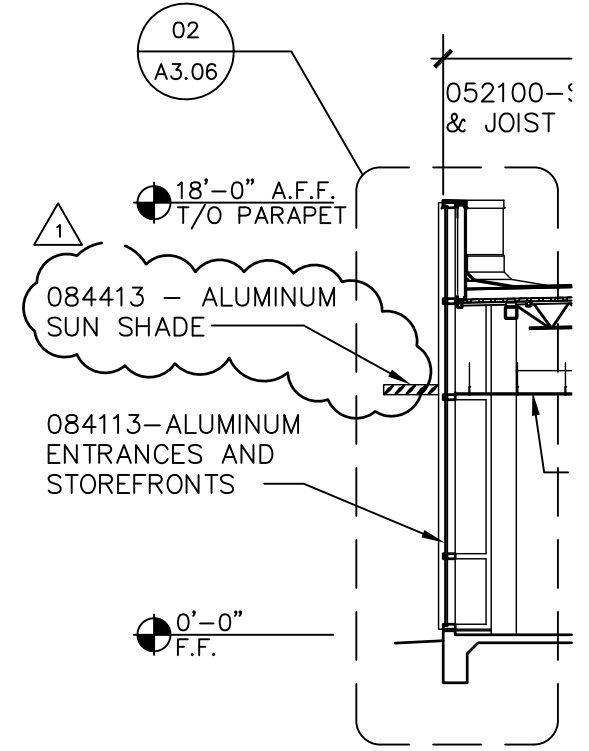
YOUTH SERVICES CENTER
6400 DELTA DRIVE, EL PASO, TEXAS
ADDENDUM #3

WRIGHT & DALBIN
ARCHITECTS
El Paso, Texas 79900
2117 Maricopa Dr.
Ph: (915) 533-5177 Fax: (915) 533-7733
www.wrightanddalbin.com

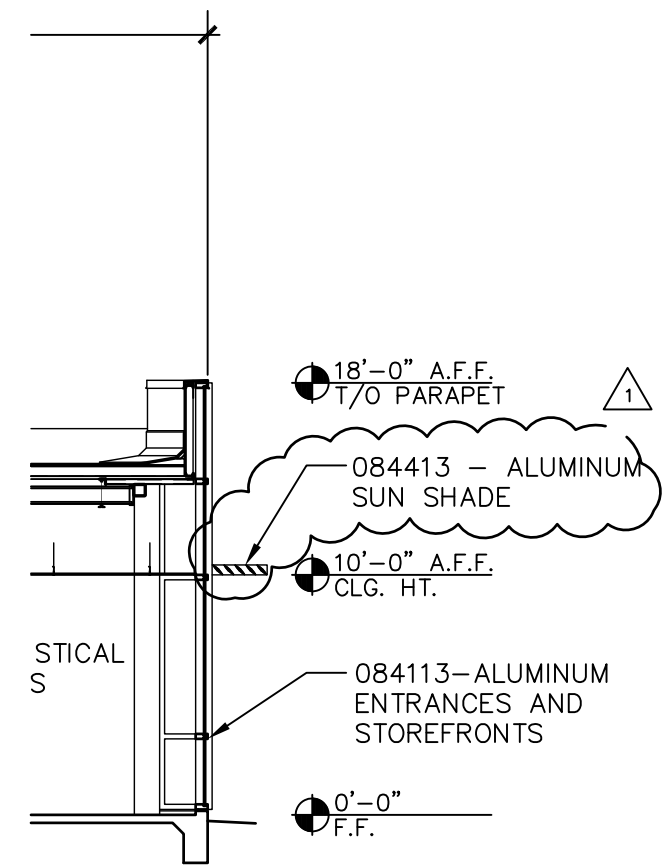
AD1.10
RE:A3.01
SHEET 10 OF 11



01 BUILDING SECTION
SCALE: 1/8" = 1' - 0"

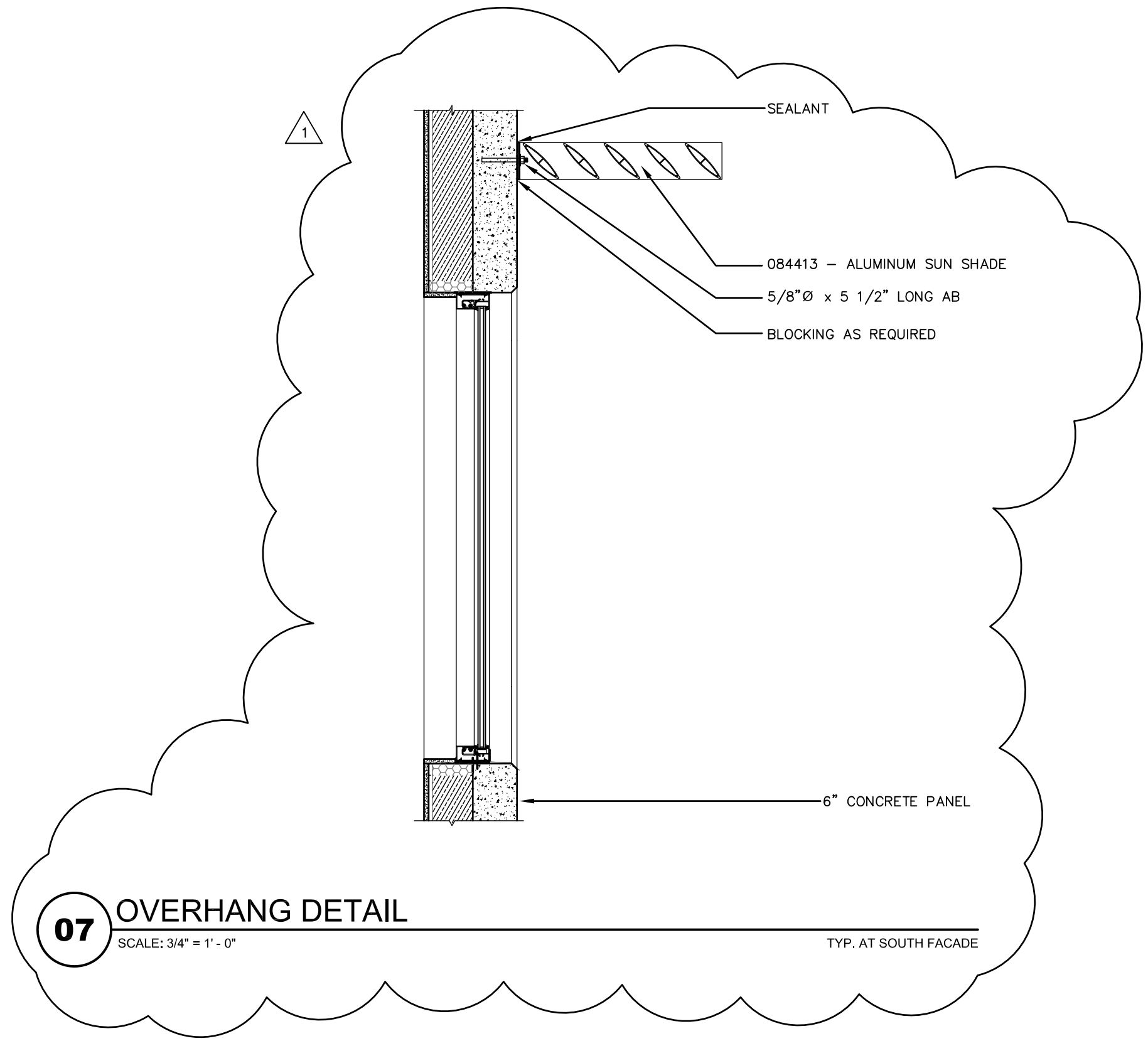


03 BUILDING SECTION
SCALE: 1/8" = 1' - 0"



04 BUILDING SECTION
SCALE: 1/8" = 1' - 0"

080559
12.29.10



07 OVERHANG DETAIL
SCALE: 3/4" = 1' - 0"

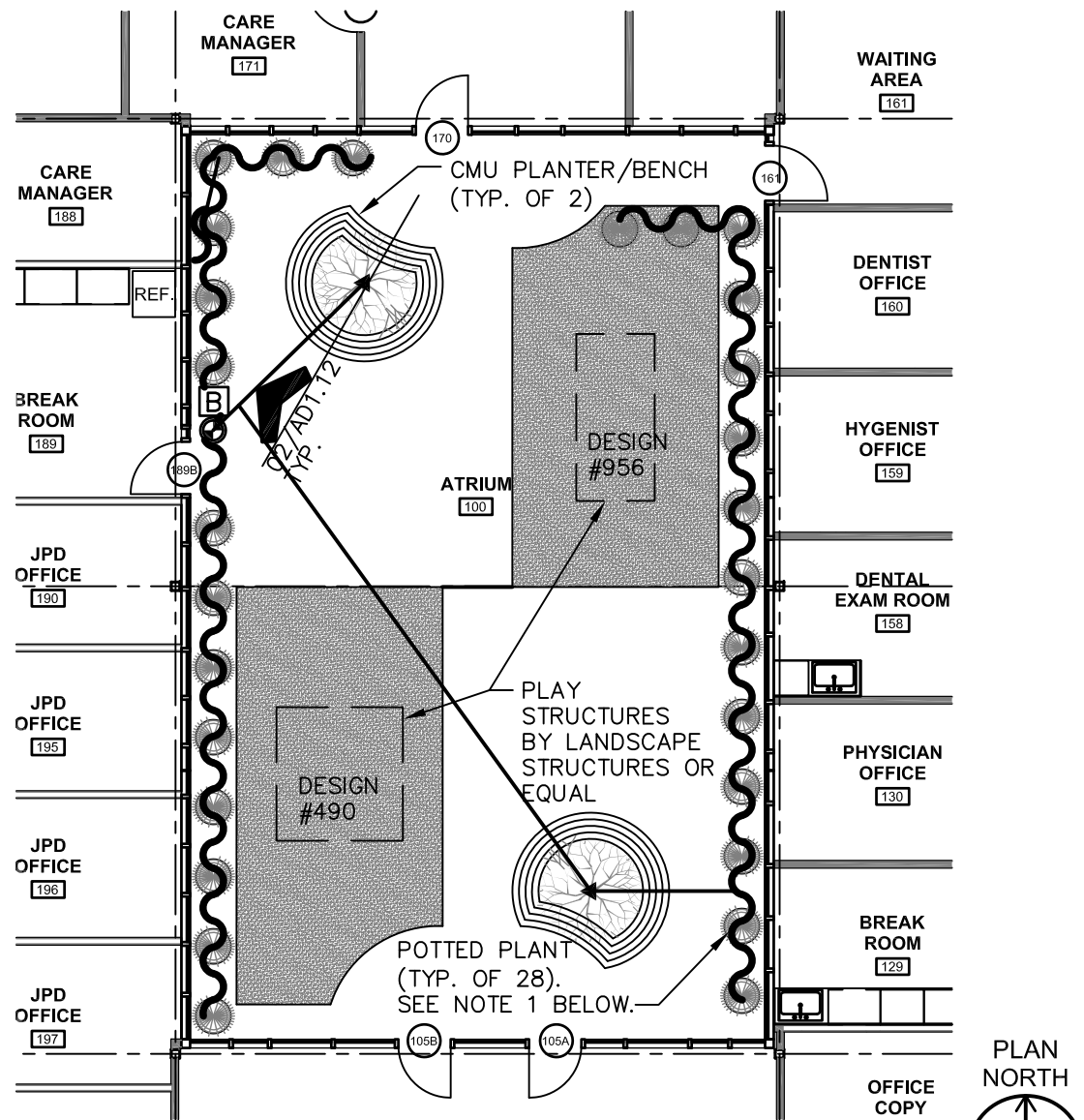
TYP. AT SOUTH FACADE

YOUTH SERVICES CENTER
6400 DELTA DRIVE, EL PASO, TEXAS
ADDENDUM #3

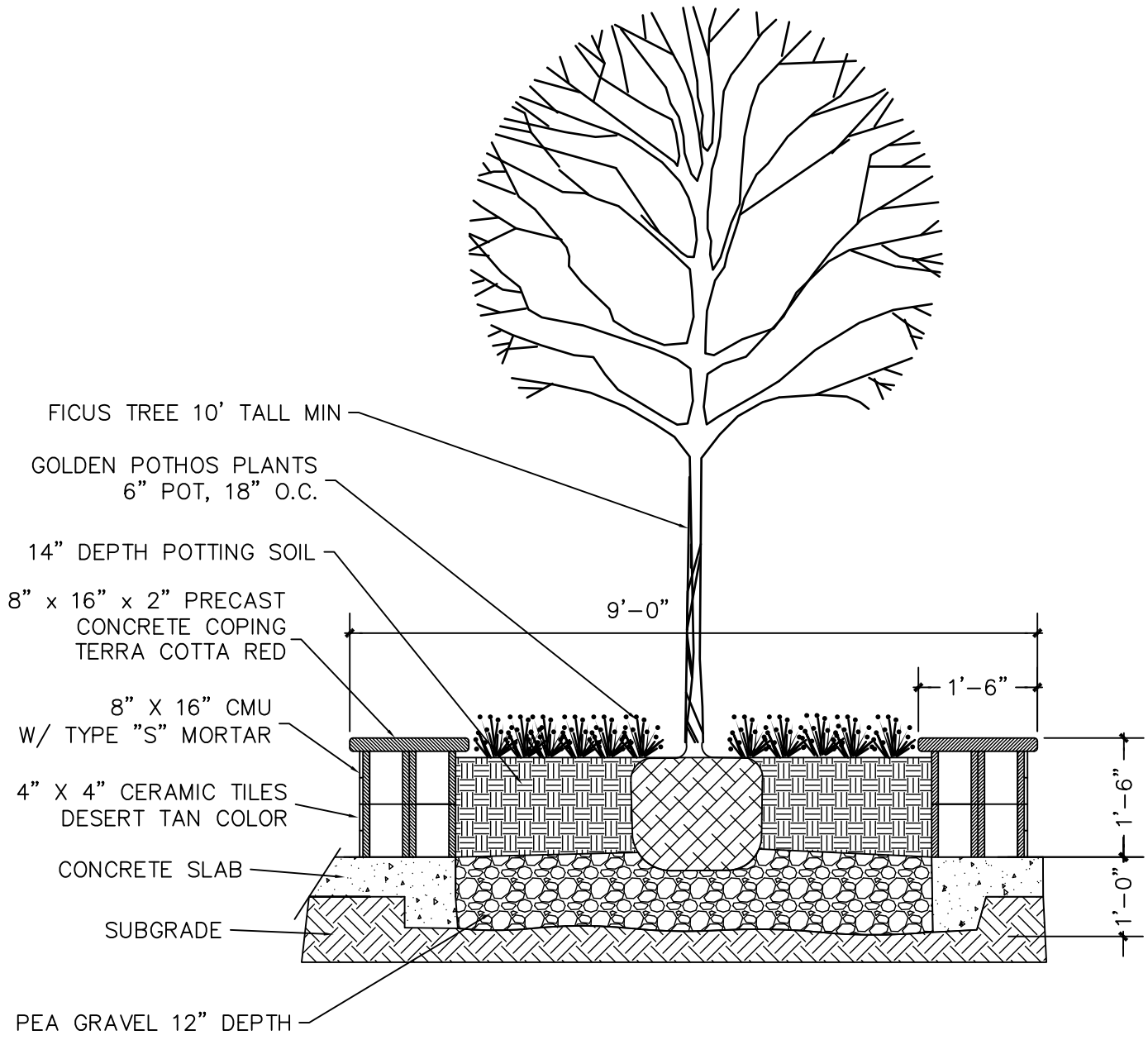
WRIGHT & DALBIN
ARCHITECTS
2115 Markham Dr.
El Paso, Texas 79920
PH: (915) 533-0777
FAX: (915) 532-7733
www.wrightdalbin.com



AD1.11
RE:A6.04
SHEET 11 OF 11



01 ENLARGED ATRIUM PLAN
SCALE: 3/32" = 1' - 0"



02 PLANTER DETAIL
SCALE: 1/2" = 1' - 0"

NOTES:

1. 24" DYNAMIC DESIGN ROLLED RIM PLANTER W/ ATTACHED SAUCER TERRA COTTA COLOR, WITH 3-GALLON TROPICAL PLANTS TO CONSIST OF AN ASSORTMENT OF; SCHEFFLERA, DRACENA, BAMBOO PALM, RUBBER PLANT, AND CORN PLANT. TO BE PLANTED IN POTTING SOIL.

IRRIGATION LEGEND

SYM	ITEM	QTY.
	3/4" BACKFLOW PREVENTER W/ ENCLOSURE	1
	1" REMOTE CONTROL VALVE, HUNTER PCZ-101 - 1" CONTROL ZONE KIT W/ HUNTER SVC-100 BATTERY POWERED CONTROLLER	1
	AGRIFIM MAXI-FLO ADJUSTABLE BUBBLER MFBA 6	2
	AGRIFIM MAXI-FLO ADJUSTABLE BUBBLER MFBA 6 NOTE: PROVIDE (2) .5 GPH EMITTERS TO EACH POTTED PLANT 1" SCHED 40 PVC PIPING, PROVIDE 3" SLEEVING UNDER AL PAVING	



YOUTH SERVICES CENTER
6400 DELTA DRIVE, EL PASO, TEXAS
ADDENDUM #3

WRIGHT & DALBIN
ARCHITECTS
El Paso, Texas 79900
2117 Maricopa Dr.
Ph: (915) 533-5777
Fax: (915) 533-7733
www.wrightdalbin.com

AD1.12
RE:A1.01