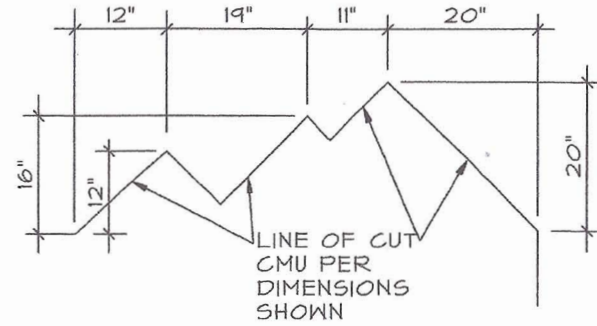


KEYED NOTES: (X)

- 2" THK. RIGID FOAM ADHERED TO CMU IN THE SHAPE OF A CIRCLE AND AT GOLF "TEE". PROVIDE AN E.I.F.S. FINISH TO MATCH ADJACENT E.I.F.S. ON STUCCO.
- TWO EXISTING BRONZE PLAQUES TO BE PROVIDED BY THE OWNER FOR INSTALLATION ON THE SIGN BY THE CONTRACTOR.
- CAST ALUMINUM LETTERS; THE SOUTHWELL CO. 4" HIGH, HELVETICA MEDIUM H-79, BLACK DURANODIC, OR APPROVED EQUAL.
- CAST ALUMINUM LETTERS; THE SOUTHWELL CO. 6" HIGH, HELVETICA MEDIUM H-79, BLACK DURANODIC, OR APPROVED EQUAL.

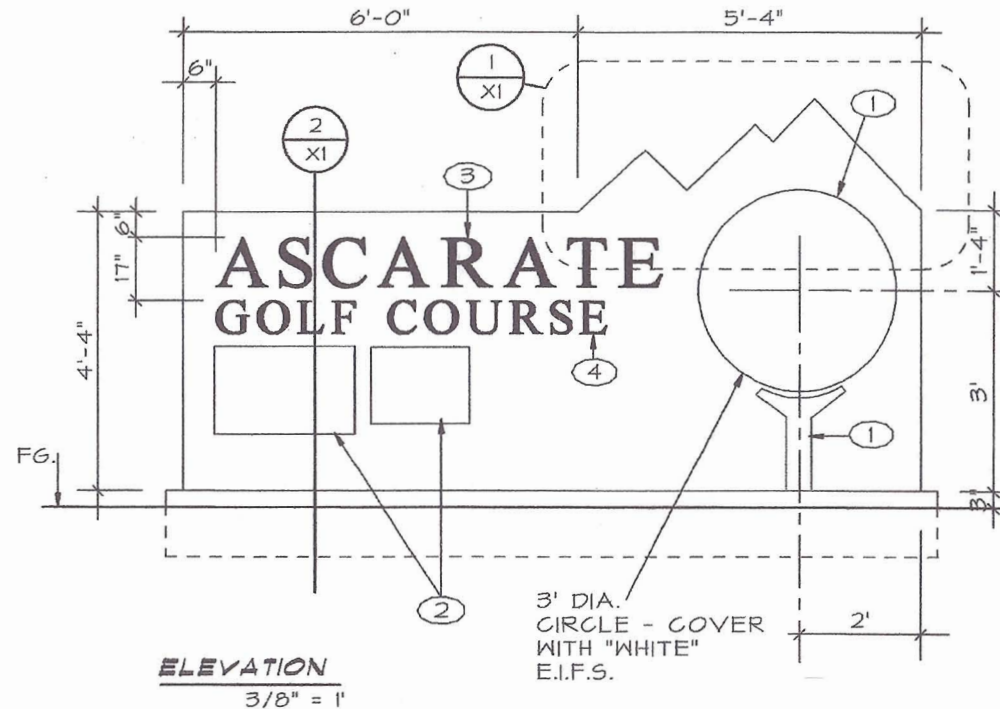
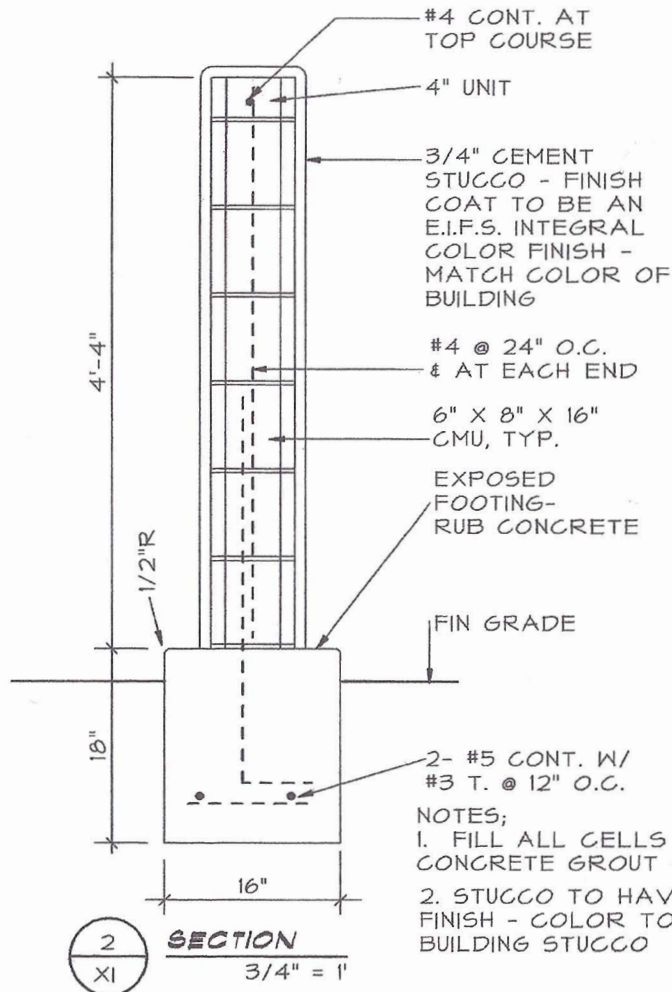


1
XI

DETAIL - PARTIAL

1/2" = 1'

NOTE CUT CMU AS INDICATED TO CREATE "MOUNTAIN" PROFILE



**CLUB HOUSE RENOVATIONS AT:
ASCARATE GOLF COURSE**

BID NUMBER 10-016
FOR THE COUNTY OF EL PASO

**ADDENDUM #1
DRAWING X1**