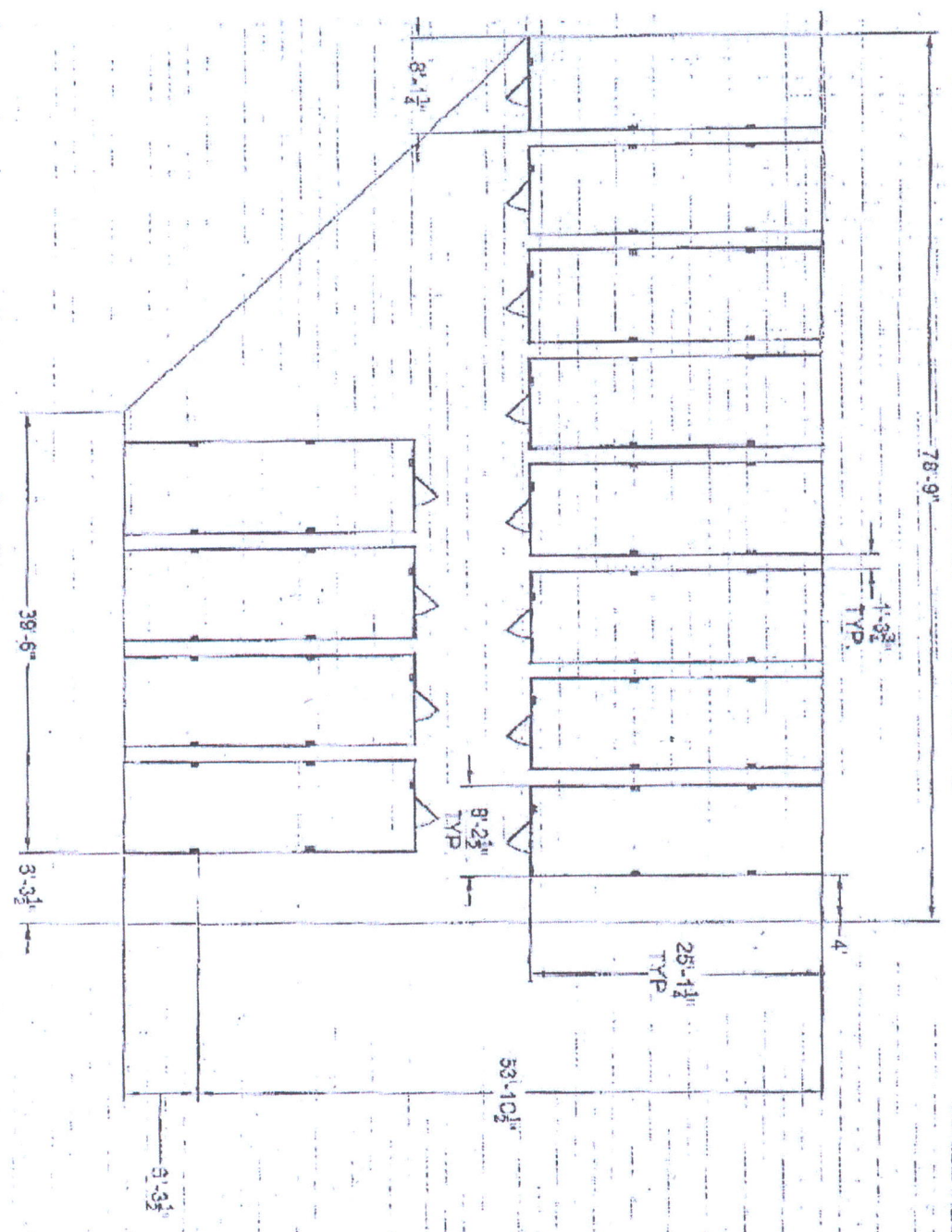


THIS SAME LAYOUT 4X

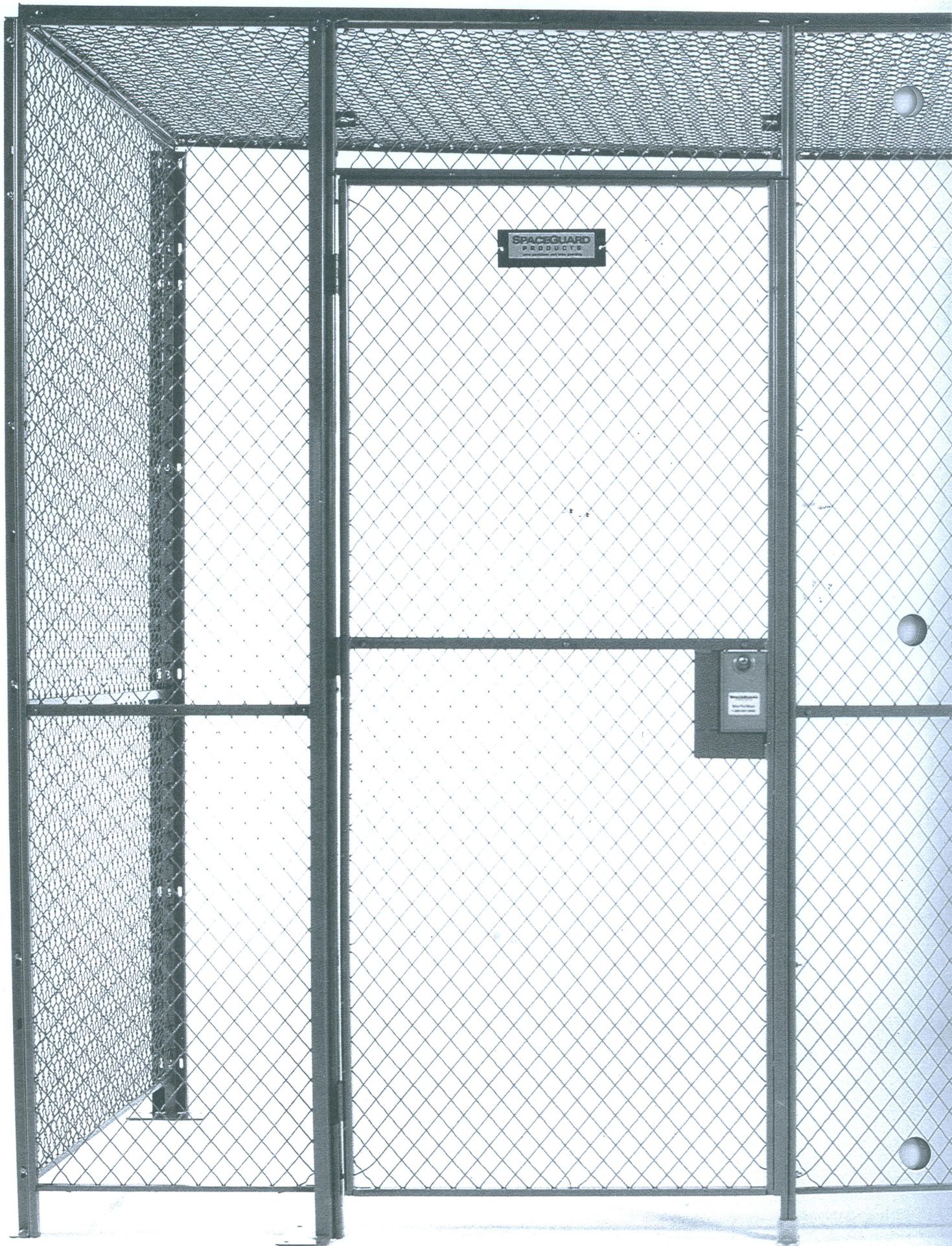


RECD
 3/10/07
 PR

SpaceGuard
PRODUCTS
 71 South Commerce Road
 Seymour, IN 47774
 Phone: 800-341-0080
 Fax: 800-473-5356

CONFIDENTIAL
 This document is the property of SpaceGuard and is not to be used, copied, or disseminated without the written consent of SpaceGuard.

Approved by: **170672**
 Date: _____
 Title: _____
 Name: _____



SPACEGUARD
PRODUCTS
One Industrial and Tech, Sparks, MD

SpaceGuard
Dog Enclosure
Control Panel

FordLOGAN



FordLogan is our traditional or conventional style of woven wire partitions. The product meets and exceeds the Master Specification section 10605 for wire partitions used by many architects. We offer standard wire partition panels in five stock widths and five stock heights. This provides you with maximum versatility to meet the greatest number of measurements for your specific storage and protection requirements. Our stock size format makes large scale production possible, assures fast delivery and makes installation easy, all of which adds up to reliable quality at a low cost.

With **FordLogan's** exclusive UNI-MESH™ design, the diamond pattern of woven wire matches continuously from panel to panel for a handsome finished appearance.

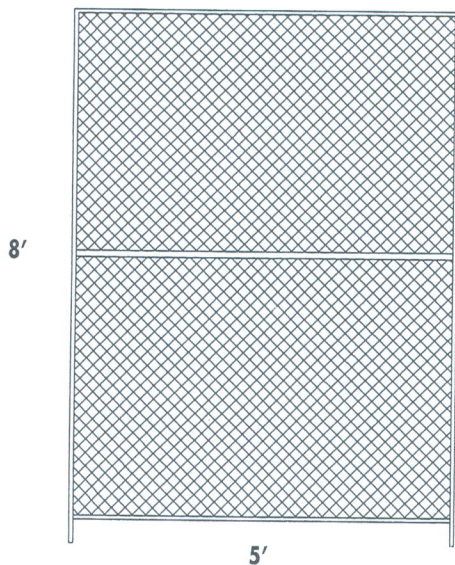
FordLogan wire partitions are the effective and economical approach to area guarding and area separation. These heavy gauge wire partitions are structurally strong to assure years of service. If your security, storage, or area guarding requirements change or expand, our wire partitions can be quickly and easily rearranged, extended or moved.

The **FordLogan** partition system is a proven system with more than 100 years of experience behind it. By maintaining the popular C-channel construction, recognized throughout the industry, **FordLogan** is the perfect choice for your wire enclosure requirements.

FordLOGAN

The standard **FordLogan** panel is available in widths of 5, 4, 3, 2, and 1 foot, and in 7, 8, 10, and 12 foot heights. For convenience as sweep space, 3.7" legs are included in all panel heights. All panels are constructed of 1 1/2" diamond mesh using 10 gauge wire, with C-channel vertical frames. Horizontal stiffener bars are securely riveted through the wire web at 3' 6" height on all panels. The basic panel in the 5 foot width is the most practical for ease of installation, costs less per linear foot, and meets a greater number of needs than any other width.

FordLogan offers posts in all standard heights. The three standard posts consist of Corner, Adjustable Corner, and Line. Corner posts are to be used when a 90 degree angle is required. Adjustable Corner posts are used for corners other than 90 degrees. Line posts serve as an intermediate stiffener spaced at recommended 15' intervals. Line posts are also used in certain doors.



Standard Panels

Part No.	Wd. x Ht.	Wt. (lbs)	Part No.	Wd. x Ht.	Wt. (lbs)
P57	5' x 7'	45	P50	5' x 10'	65
P47	4' x 7'	41	P40	4' x 10'	55
P37	3' x 7'	32	P30	3' x 10'	45
P27	2' x 7'	25	P20	2' x 10'	35
P17	1' x 7'	17	P10	1' x 10'	25
P58	5' x 8'	54	P512	5' x 12'	78
P48	4' x 8'	45	P412	4' x 12'	66
P38	3' x 8'	37	P312	3' x 12'	54
P28	2' x 8'	28	P212	2' x 12'	41
P18	1' x 8'	19	P112	1' x 12'	29

Panel Specifications

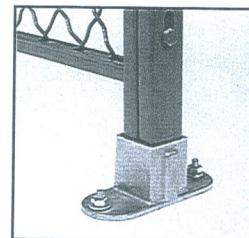
- Wire Mesh: 10 gauge triple crimped steel wire, 1 1/2" diamond mesh, securely clinched to frames
- Vertical Frames: 1 1/4" x 5/8" roll formed "C" type channels mortised and tenoned at corners. Holes for 1/4" bolts approximately 16" on center
- Horizontal Frames: 1" x 1/2" roll formed channels mortised and tenoned at corners
- Center reinforcement: Two 1" x 3/8" roll formed channels riveted together through mesh 42" above floor line
- Top Cap Channel: 1 1/2" x 1/2" x 14 ga. roll formed channel with holes for bolting to top of panels
- All items furnished with appropriate hardware. Field bracing, floor and wall anchors not provided. These items can be furnished upon request
- Phosphate washed with a standard finish of one coat of high quality semi-gloss machine gray or 5 additional standard colors. See last page for color chart

Standard Posts

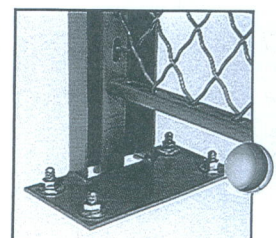
	7' High Part No.	8' High Part No.	10' High Part No.	12' High Part No.
Line	LP7	LP8	LP10	LP12
Corner	CP7	CP8	CP10	CP12
Adj. Corner	7AJCP	8AJCP	10AJCP	12AJCP

Post Specifications

- Corner Post: 1 1/4" x 1 1/4" x 11 gauge hot roll formed angle
- Line Post: 3 1/2" x 1 1/4" x 10 gauge
- Base shoes: Die Cast Aluminum, 2" high



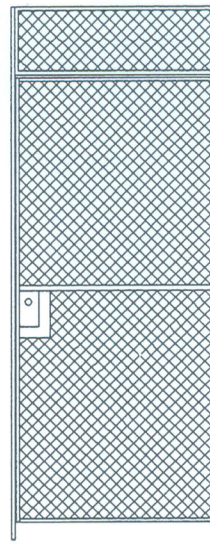
Base Shoe



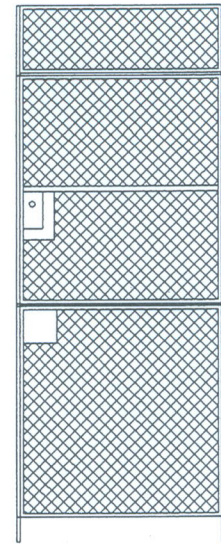
Line Post

FordLogan Standard Single Hinge Doors and Dutch Doors

Part No.	Opening Width & Height	Transom Height	Wt. (lbs)
H377	3' x 7'	none	58
H477	4' x 7'	none	68
H378	3' x 7'	1'	67
H478	4' x 7'	1'	77
H370	3' x 7'	3'	73
H470	4' x 7'	3'	86
H3712	3' x 7'	5'	80
H4712	4' x 7'	5'	93
DD377	3' x 7' Dutch	none	67
DD378	3' x 7' Dutch	1'	75
DD370	3' x 7' Dutch	3'	85
DD372	3' x 7' Dutch	5'	100



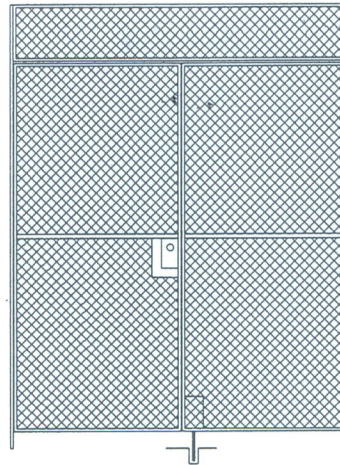
Hinge Door



Dutch Door

FordLogan Standard Double Hinge Doors

Part No.	Opening Width & Height	Transom Height	Wt. (lbs)
DH677	6' x 7'	none	151
DH877	8' x 7'	none	164
DH678	6' x 7'	1'	179
DH878	8' x 7'	1'	208
DH688	6' x 8'	none	200
DH888	8' x 8'	none	216
DH670	6' x 7'	3'	200
DH870	8' x 7'	3'	250
DH680	6' x 8'	2'	230
DH880	8' x 8'	2'	280
DH6712	6' x 7'	5'	220
DH8712	8' x 7'	5'	260

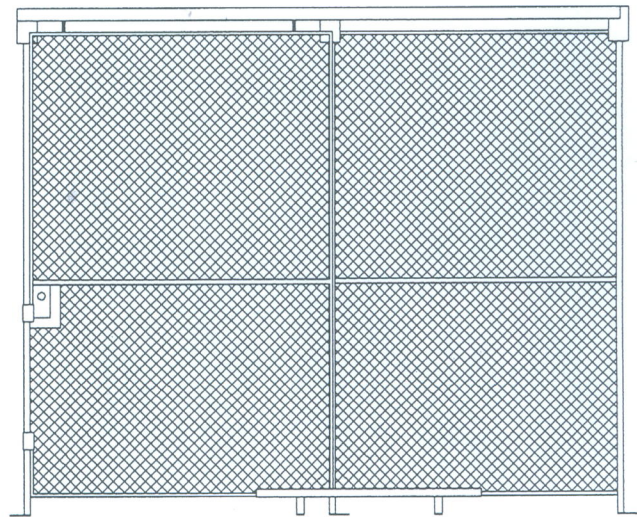


Double Hinge Door

- Doors: 1 1/4" x 5/8" channel frame with 1 1/4" flat bar cover on all sides. Locking arrangements sold separately.
- Hinged doors: Hung by three 3" x 3" butt hinges and furnished slam bar
- Two line posts included with double hinge door

FordLogan Standard Single Sliding Door

Part No.	Opening Width & Height	Transom Height	Wt. (lbs)
S377	3' x 7'	none	85
S477	4' x 7'	none	95
S577	5' x 7'	none	110
S677	6' x 7'	none	135
S378	3' x 7'	1'	95
S478	4' x 7'	1'	107
S578	5' x 7'	1'	125
S678	6' x 7'	1'	155
S370	3' x 7'	3'	101
S470	4' x 7'	3'	114
S570	5' x 7'	3'	135
S670	6' x 7'	3'	168
S3712	3' x 7'	5'	108
S4712	4' x 7'	5'	120
S5712	5' x 7'	5'	140
S6712	6' x 7'	5'	175



Single Sliding Door

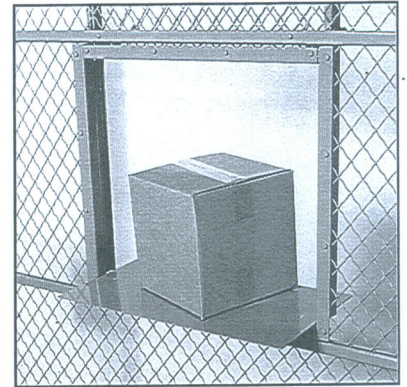
- Sliding Doors are hung by two 4 wheel trolleys rolling in an enclosed track
- Furnished with all necessary hardware to install and operate

Please consult our customer service department for additional door sizes and configurations. 1-800-841-0680

FordLogan service windows installed in Panel

Part No.	Opening Width & Height	Wt. (lbs)
S2421	24" x 21" Slide-up	37
C2415	24" x 15" Fold down	25

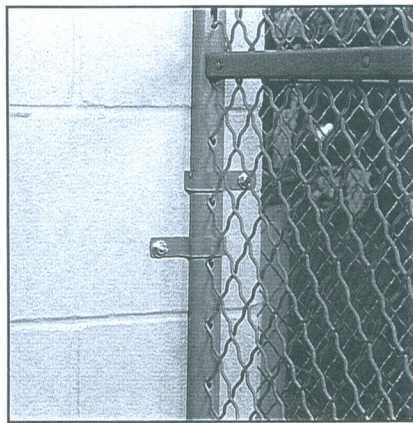
- Custom installed in panel
- Shelf constructed of 12 gauge steel
- Heavy spring latches to hold window upright
- Can be purchased separately for field installation



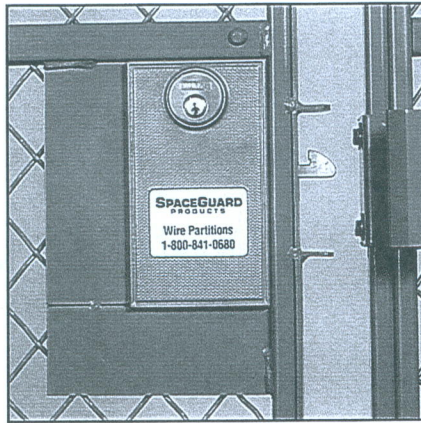
Service Window

FordLOGAN

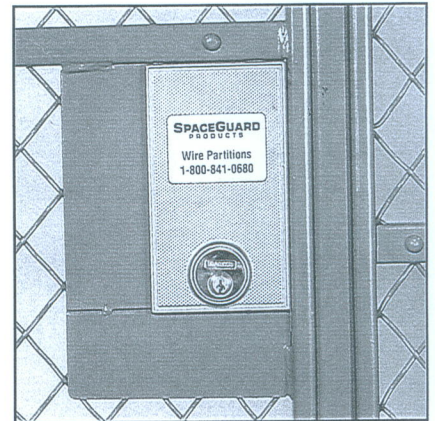
Features and Accessories



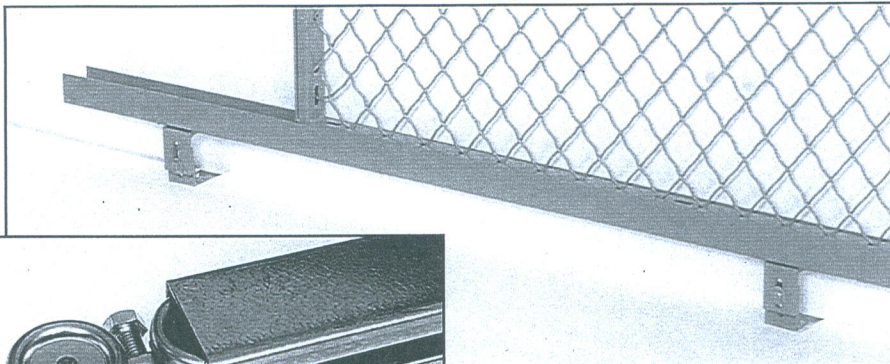
Wall clips



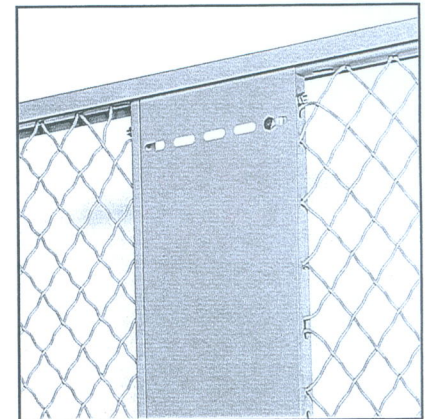
Slide door lock



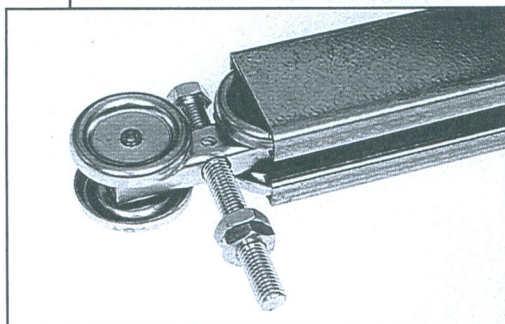
Hinge door lock



Slide door guide



Flex panel



Slide door trolley and track assembly

LOCKS

1080
1080/T6

1080 DEADLOCK

→ **1080-1:** KEYED ONE SIDE
1080-2: KEYED BOTH SIDES
LOCK SIZE: 5 1/2" x 1 1/2" x 3 3/4"
LOCK WEIGHT: 7 POUNDS
BOLT SIZE: 2" x 3/4"
BOLT THROW: 3/4"

APPLICATION: Swinging cell doors,
corridor doors, storage room doors.
High security doors where slam-locking
is not required.

FUNCTION: Key activated locking and
unlocking. Deadlocks in both locked
and unlocked position.

TECHNICAL DATA

STANDARD FINISH: Galvanized

COVER: Cold-rolled steel plate

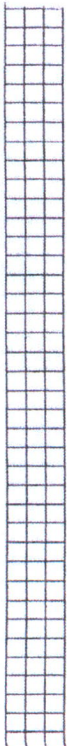
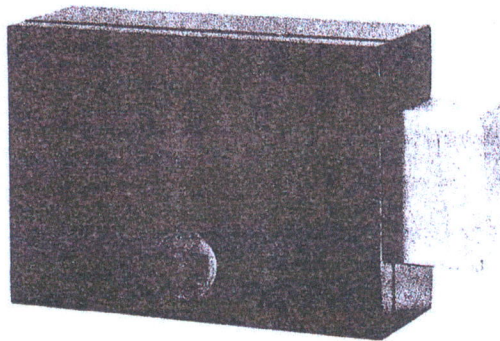
CASE: Malleable iron

LOCK BOLT: Cold-rolled steel with 1/4" diameter
case-hardened steel insert pins

PARACENTRIC CYLINDER & KEYS: Silicon
bronze/copper alloy

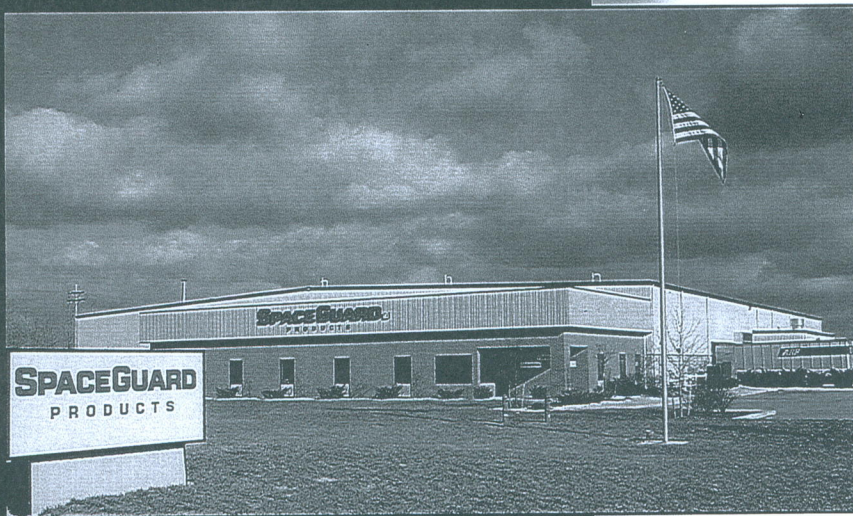
TUMBLERS: .097" spring temper brass.

Tumblers actuated by phosphor bronze springs,
5 tumblers per lock.



SpaceGuard Products is a leading manufacturer in the wire partitioning and area guarding industry. SpaceGuard was formed through the consolidation of **Logan Wire Company** and **Ford Fence Company**. With over 100 years of combined product experience, SpaceGuard is the most experienced wire company in the market today.

SpaceGuard Products, which is headquartered in Seymour, Indiana, maintains several distribution centers throughout the United States.



The following pages provide information on our products and services. Included are manufacturing specifications for standard product and our engineered products.

For your convenience, **SpaceGuard Products** has a toll-free number to answer any questions about our products. Please contact us at

1-800-841-0680 for your nearest dealer. We look forward to working with you, and your company, on all your wire partition needs.


Thank You,

SpaceGuard Products

Our Mission:

Through our goal of continuous improvement for service and quality, we will continue to be the leader in the wire partition and area guarding systems industry by creating superior value to our customers.

MEMBER OF:

 **MHEDA**

 **MATERIAL HANDLING
INDUSTRY**