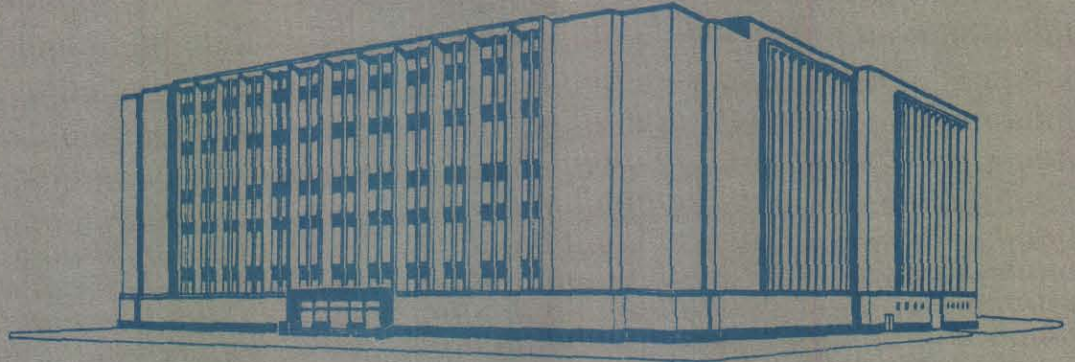


**T
E
X
A
S

1
9
6
8**



COUNTY of EL PASO

**ANNUAL
REPORT**

FOR YEAR ENDED DECEMBER 31,

1968

WILLIS H. SAMPLE

**COUNTY AUDITOR
EL PASO, TEXAS**

COUNTY OF EL PASO, TEXAS

TABLE OF CONTENTS

	<u>PAGE</u>
<u>LETTER OF TRANSMITTAL</u>	<u>I</u>
<u>FINANCIAL STATEMENTS:</u>	
<u>COMBINED STATEMENTS</u>	
A-1 COMBINED BALANCE SHEET - ALL FUNDS	1 - 4
A-2 COMPARATIVE BALANCE SHEETS FOR YEARS ENDING DECEMBER 31, 1966, 1967 AND 1968.....	5 - 6
A-3 STATEMENT OF CHANGES IN TAXES RECEIVABLE.....	7
A-4 SUMMARY STATEMENT OF CASH RECEIPTS AND DISBURSEMENTS ALL FUNDS	8
A-5 STATEMENT OF INVESTMENTS.....	9
<u>GENERAL FUND</u>	
B-1 BALANCE SHEET.....	10
B-2 ANALYSIS OF CHANGES IN FUND BALANCE.....	11
B-3 SUMMARY STATEMENT OF REVENUE - ESTIMATED AND ACTUAL.....	12
B-4 SUMMARY STATEMENT OF EXPENDITURES-COMPARED WITH APPROPRIATIONS	13 - 14
B-5 STATEMENT OF REVENUE - ESTIMATED AND ACTUAL.....	15
B-6 STATEMENT OF EXPENDITURES COMPARED WITH AUTHORIZATIONS.....	16 - 21
<u>ROAD & BRIDGE FUND</u>	
C-1 BALANCE SHEET.....	22
C-2 ANALYSIS OF CHANGES IN FUND BALANCE.....	23
C-3 STATEMENT OF REVENUE - ESTIMATED AND ACTUAL AND STATEMENT OF EXPENDITURES COMPARED WITH AUTHORIZATIONS.....	24
<u>JURY FUND</u>	
D-1 BALANCE SHEET.....	25
D-2 ANALYSIS OF CHANGES IN FUND BALANCE.....	26
D-3 STATEMENT OF REVENUE - ESTIMATED AND ACTUAL AND STATEMENT OF EXPENDITURES COMPARED WITH AUTHORIZATIONS.....	27

COUNTY OF EL PASO, TEXAS

TABLE OF CONTENTS

	<u>PAGE</u>
<u>FINANCIAL STATEMENTS:</u>	
<u>PUBLIC BUILDING & IMPROVEMENT FUND</u>	
E-1 BALANCE SHEET.....	28
E-2 ANALYSIS OF CHANGES IN FUND BALANCE.....	29
E-3 STATEMENT OF REVENUE - ESTIMATED AND ACTUAL.....	30
<u>INTEREST & SINKING FUNDS</u>	
F-1 BALANCE SHEET.....	31
F-2 ANALYSIS OF CHANGES IN FUND BALANCE.....	32
F-3 STATEMENT OF REVENUES - ESTIMATED AND ACTUAL.....	33
<u>TRUST AND AGENCY FUNDS</u>	
G-1 BALANCE SHEET.....	34
G-2 STATEMENT OF CASH RECEIPTS AND DISBURSEMENTS.....	35
<u>GENERAL FIXED ASSETS</u>	
H-1 COMPARATIVE STATEMENT OF FIXED ASSETS.....	36
H-2 DETAILED STATEMENT OF GENERAL FIXED ASSETS.....	37
<u>GENERAL BONDED AND MORTGAGE DEBT AND INTEREST</u>	
I-1 ANALYSIS OF CHANGES IN BONDED DEBT OCCURRING DURING YEAR 1968.	38 - 39
I-2 STATEMENT OF BOND AND MORTGAGE PRINCIPAL AND INTEREST DETAILED BY ISSUES.....	40
I-3 STATEMENT OF GENERAL BONDED AND MORTGAGE DEBT AND INTEREST....	41
I-4 GENERAL BOND AND MORTGAGE DEBT SERVICE REQUIREMENTS UNTIL MATURITY.....	42
<u>STATISTICAL TABLES</u>	
J-1 TAX LEVIES AND TAX COLLECTIONS FOR THE LAST TEN YEARS.....	43
J-2 TAX RATES AND FUND ALLOCATION FOR THE LAST TEN YEARS.....	44
J-3 MISCELLANEOUS STATISTICAL FACTS.....	45

COUNTY OF EL PASO, TEXAS

OFFICIAL DIRECTORY

FOR THE YEAR ENDED DECEMBER 31, 1968

DISTRICT COURTS

JUDGE, 34TH. JUDICIAL DISTRICT
JUDGE, 41ST. JUDICIAL DISTRICT
JUDGE, 65TH. JUDICIAL DISTRICT
JUDGE, 120TH. JUDICIAL DISTRICT
JUDGE, 171ST. JUDICIAL DISTRICT

INCUMBENT

HON. WILLIAM E. WARD
HON. CHAS. R. SCHULTE
HON. R. E. CUNNINGHAM
HON. HANS E. BROCKMOLLER
HON. EDWIN F. BERLINER

COMMISSIONERS' COURT

JUDGE OF EL PASO COUNTY
COMMISSIONER, PRECINCT 1
COMMISSIONER, PRECINCT 2
COMMISSIONER, PRECINCT 3
COMMISSIONER, PRECINCT 4

HON. COLBERT COLDWELL
HON. CLYDE C. ANDERSON
HON. RICHARD R. TELLES
HON. ROGELIO SANCHEZ
HON. SAM BLACKHAM

OTHER COURTS

JUDGE, COUNTY COURT AT LAW #1
JUDGE, COUNTY COURT AT LAW #2

HON. GEORGE RODRIGUEZ
HON. RICHARD E. CRAWFORD

OTHER OFFICERS

COUNTY TAX ASSESSOR AND COLLECTOR

CHARLES R. TERRAZAS

COUNTY AUDITOR

W. H. SAMPLE

COUNTY ATTORNEY

JACK N. FANT

COUNTY CLERK

J. W. FIELDS

DISTRICT ATTORNEY

W. BARTON BOLING

DISTRICT CLERK

J. W. A. JOHNSON

SHERIFF

MICHAEL J. SULLIVAN, JR.

COUNTY TREASURER

HAL E. DEAN, SR

COUNTY PURCHASING AGENT

O. E. BARTHOLOMAE

OFFICIAL DIRECTORY

DECEMBER 31, 1968

CONSTABLE, PRECINCT 1	CHARLES W. FOSTER
DEPUTY CONSTABLE, PRECINCT 1	VERNON BAILEY
CONSTABLE, PRECINCT 2	VICTOR BELTRAN
CONSTABLE, PRECINCT 3	AURELIO LARA
CONSTABLE, PRECINCT 4	ANTONIO TRUJILLO
DEPUTY CONSTABLE, PRECINCT 4	J. M. MONTES
CONSTABLE, PRECINCT 5	GENE STRACHAN
DEPUTY CONSTABLE, PRECINCT 5	B. BACA
CONSTABLE, PRECINCT 6	L. J. AYOUB
CONSTABLE, PRECINCT 7	WILLIE C. NABHAN
CONSTABLE, PRECINCT 8	MIKE GALLEGOS
COUNTY ROAD ADMINISTRATOR	NORMAN SALOME
DIRECTOR, CITY-COUNTY HEALTH UNIT	DR. M. D. HORNEDO
COUNTY SURVEYOR	L. C. LANDON
COUNTY AGRICULTURE AGENT	ANGUS DICKSON, JR.
VETERANS COUNTY SERVICE OFFICER	GABRIEL NAVARRETE
CHIEF PROBATION OFFICER	MORRIS RALEY
COUNTY LIBRARIAN	DAPHNE D. WALKER
BUILDING SUPERINTENDENT	BENJAMIN ESCOBAR
JUSTICE OF THE PEACE, PREC. 1 PL. 1	BRUNSON D. MOORE
JUSTICE OF THE PEACE, PREC. 1 PL. 2	DANNY J. SNOOKS
JUSTICE OF THE PEACE, PREC. 2	R. G. CANDELARIA
JUSTICE OF THE PEACE, PREC. 3	A. H. SANCHEZ
JUSTICE OF THE PEACE, PREC. 4	D. F. WHITE

MARCH 24, 1969

HONORABLE DISTRICT JUDGES:

R. E. CUNNINGHAM, JUDGE, 65TH. DISTRICT COURT
W. E. WARD, JUDGE, 41ST. DISTRICT COURT
H. E. BROCKMOLLER, JUDGE, 120TH. DISTRICT COURT
E. F. BERLINER, JUDGE, 171ST., DISTRICT COURT
C. R. SCHULTE, JUDGE, 41ST. DISTRICT COURT

HONORABLE COUNTY COMMISSIONERS' COURT:

COLBERT COLDWELL, COUNTY JUDGE
C.C. ANDERSON, PRECINCT 1
R. R. TELLES, PRECINCT 2
R. SANCHEZ, PRECINCT 3
S. BLACKHAM, PRECINCT 4

GENTLEMEN:

IN COMPLIANCE WITH ARTICLE 1665, REVISED TEXAS CIVIL STATUTES AS AMENDED,
I HEREWITH PRESENT FOR YOUR INFORMATION AND GUIDANCE MY REPORT OF THE
FINANCIAL CONDITION OF EL PASO COUNTY AT DECEMBER 31, 1968, AND THE RESULTS
OF OPERATIONS FOR THE YEAR THEN ENDED.

THE VARIOUS SCHEDULES IN THIS REPORT ARE FROM ACCOUNTS MAINTAINED IN THE
OFFICE OF THE COUNTY AUDITOR. THE ACCOUNTS FOR THIS COUNTY ARE CONSIDERED
AS BEING MAINTAINED ON A MODIFIED ACCRUAL BASIS. IT IS A BASIS THAT MAY
BE MORE APTLY EXPLAINED AS FOLLOWS:

- A. APPROPRIATIONS ARE ENCUMBERED FOR REQUISITIONS, SALARIES AND
CONTRACTS PENDING ACTUAL CASH EXPENDITURES.
- B. ESTIMATED RECEIVABLES TO BE COLLECTED DURING THE FISCAL YEAR
ARE AVAILABLE FOR APPROPRIATION.
- C. DEPRECIATION IS NOT COMPUTED ON PROPERTY AND EQUIPMENT OWNED BY
THE COUNTY.
- D. IMPORTANT REVENUES AND EXPENSES ARE ACCRUED AT THE END OF EACH
FISCAL YEAR.

INDIVIDUAL ACCOUNT RECORDS ARE MAINTAINED FOR THE VARIOUS FUNDS IN THE REGISTRY OF THE SEVERAL COURTS-AT-LAW. ALL SUCH FUNDS ARE IN THE CUSTODY OF THE DISTRICT CLERK AND COUNTY CLERK. ON DECEMBER 31, 1968 THE FUNDS OF THE DISTRICT CLERK TOTALED \$272,362.23 AND THOSE OF THE COUNTY CLERK \$340,030.81. THESE FUNDS ARE SUBJECT TO THE ORDER OF THE VARIOUS COURTS, THEREFORE THEY ARE NOT INCLUDED IN THE COUNTY STATEMENTS MAKING UP THIS REPORT.

COUNTY RECORDS OF FIXED ASSETS REFLECT THAT THEY WERE FIRST FORMALIZED WITH THE YEAR ENDING DECEMBER 31, 1958. ALL ITEMS UNDER THE HEADING "EQUIPMENT AND FURNISHINGS" ARE KEPT IN DETAIL AND AN ANNUAL INVENTORY TAKEN WITH THE GENERAL BOOKS OF THE COUNTY ADJUSTED ANNUALLY FOR THE CHANGES THEREIN. ALSO ALL OTHER CLASSES OF FIXED ASSETS ARE ADJUSTED ANNUALLY.

YOUR ATTENTION IS DIRECTED TO THE FACT THAT ALL FUNDS, SECURITIES AND VARIOUS RESERVE ACCOUNTS OF THE EMPLOYEES' RETIREMENT SYSTEM ARE INCLUDED IN THIS REPORT. THE CASH AND INVESTMENTS MADE FOR THIS FUND ARE UNDER THE DIRECT CUSTODY OF THE COUNTY TREASURER AS PER RULING OF THE COUNTY ATTORNEY.

COMMENTS ON "COURTHOUSE HAPPENINGS" AND FINANCIAL HIGHLIGHTS FOR THE YEAR 1968

1. THE ANNUAL COUNTY OPERATING BUDGET WAS ADOPTED BY THE COMMISSIONERS' COURT ON JANUARY 8, 1968. DURING THE YEAR, TWO EMERGENCIES WERE DECLARED BY COMMISSIONERS' COURT THAT REQUIRED OPERATING BUDGET AMENDMENTS. ON SEPTEMBER 9, 1968, REVENUES WERE INCREASED \$33,755.00 AND APPROPRIATIONS \$33,755.00 BY COURT ORDER. ON NOVEMBER 12, 1968, BOTH REVENUES AND APPROPRIATIONS WERE INCREASED IN THE AMOUNT OF \$58,500.00 BY COURT ORDER. AFTER THE TWO AMENDING ORDERS, THE TOTAL AMOUNT OF THE 1968 BUDGET WAS \$4,372,066.00.
2. THE AUDITOR'S OFFICE PURSUED THE POLICY OF RECOMMENDING TO THE COUNTY TREASURER AND COMMISSIONERS' COURT THAT IDLE COUNTY FUNDS BE INVESTED IN TIME DEPOSITS OR GOVERNMENT SECURITIES. THE COUNTY'S INTEREST EARNINGS IN 1968 - \$41,556.26.
3. ASSETS OF EMPLOYEES' RETIREMENT SYSTEM INCREASED \$136,712 FOR THE YEAR TO A TOTAL OF \$1,240,938. INTEREST EARNED ON INVESTMENTS OF THE SYSTEM FOR 1968 WAS \$53,724. AN INCREASE OF \$7,694 OVER EARNINGS IN THE YEAR 1967. INTEREST WAS CREDITED TO THE PARTICIPANTS IN THE SYSTEM AT THE RATE OF $3\frac{1}{2}\%$ WHICH IS THE MAXIMUM ALLOWED BY THE BY-LAWS OF THE RETIREMENT SYSTEM.

4. THE TOTAL EL PASO COUNTY BOND AND MORTGAGE PRINCIPAL INDEBTEDNESS AS OF DECEMBER 31, 1968 WAS \$4,190,000 AND THE INTEREST TO BE PAID ON THIS INDEBTEDNESS TO MATURITY WAS \$1,096,678. BASED ON THE ESTIMATED COUNTY POPULATION OF 394,000 AS OF DECEMBER 31, 1968, THE PRINCIPAL BONDED INDEBTEDNESS OF THE COUNTY IS \$10.63 PER CAPITA.
5. THE DATA PROCESSING DEPARTMENT RECEIVED AS SCHEDULED, AN IBM 360/20 COMPUTER ABOUT JUNE 25, 1968. THE RECEIPT OF THIS EQUIPMENT ENABLED THE COUNTY TO COMPLETELY REVISE ITS CENTRAL PAYROLL SYSTEM EFFECTIVE NOVEMBER 1, 1968. THIS NEW PAYROLL SYSTEM IS WORKING EFFECTIVELY AND WITH A CONSIDERABLE SAVING OF MAN-HOURS BY EACH COUNTY DEPARTMENT. THE TOTAL ESTIMATED DOLLAR VALUE OF MAN-HOURS SAVED ANNUALLY BY THE NEW CENTRAL COMPUTER PAYROLL SYSTEM IS \$3,100.00. THE DEPARTMENT IS NOW CAPABLE OF ASSUMING A NUMBER OF OPERATIONS FROM OTHER COUNTY DEPARTMENTS THAT WOULD GREATLY REDUCE THEIR WORK LOAD.
6. ON NOVEMBER 4, 1968 COMMISSIONERS' COURT RATIFIED THE SALE OF COUNTY LAND AUCTIONED BY COUNTY JUDGE COLBERT COLDWELL ON OCTOBER 30, 1968. THE LAND CONSISTING OF 542.73 ACRES IN HUGH G. FOSTER SURVEY, SECTION No. 260 AND 552.31 ACRES IN HUGH G. FOSTER SURVEY, SECTION No. 261 WAS PURCHASED JOINTLY BY MORTGAGE INVESTMENT COMPANY OF EL PASO, TEXAS AND VARIOUS FARAH TRUSTS OF EL PASO, TEXAS FOR A TOTAL SUM OF \$175,000.00. OF THE SUM RECEIVED FROM THIS SALE, \$128,000.00 WAS DESIGNATED BY COMMISSIONERS' COURT ON NOVEMBER 18, 1968 AS FUNDS TO BE USED TO CONSTRUCT COURTROOMS ON THE SIXTH FLOOR OF THE CITY-COUNTY BUILDING. ON DECEMBER 9, 1968, COMMISSIONERS' COURT SELECTED THE ARCHITECTURAL FIRM OF MONROE, HIGGINS & ASSOCIATES TO DRAW THE PLANS FOR THE NEW COURTROOM FACILITIES.
7. THE J. HAROLD TILLMAN HEALTH CENTER LOCATED IN THE "COURTHOUSE COMPLEX" WAS APPROXIMATELY 95% COMPLETE ON DECEMBER 31, 1968. WHEN OCCUPIED EARLY IN THE YEAR 1969, THE OPERATING EFFICIENCY OF THE CITY-COUNTY HEALTH UNIT SHOULD BE GREATLY ENHANCED.
8. ON SEPTEMBER 24, 1968, THE STATE, COUNTY AND CITY JOINTLY BROUGHT SUIT IN 120TH. DISTRICT COURT AND RECOVERED 68 LOTS FORMERLY DEEDED BY THEM TO THE CITIZENS COMMITTEE ON THE CARE OF THE AGED, INC. ON DECEMBER 21, 1961. THE COUNTY'S INTEREST IS AS FOLLOWS:
 - (1.) LOTS 1-20 INCL., BLK. 101, ALEXANDER ADDITION - 48.735%
 - (2.) LOTS 1-20 INCL., BLK. 104, ALEXANDER ADDITION - 50.597%
 - (3.) LOTS 1-20 INCL., BLK. 105, ALEXANDER ADDITION - 42.434%
 - (4.) LOTS 1-8 INCL., BLK. 106, ALEXANDER ADDITION - 22.903%

AT THE PRESENT TIME, THE FUTURE USAGE OF THIS LAND HAS NOT BEEN DETERMINED.

9. COUNTY TAX ROLL INCREASED FROM \$286,835,784.00 FOR THE YEAR 1967 TO \$297,275,572 FOR THE YEAR 1968. THERE WAS NO INCREASE IN THE TAX RATE WHICH REMAINED AT .95 FOR EACH \$100 OF ASSESSED VALUE. COLLECTION FOR THE 1967 CURRENT TAX ROLLS AMOUNTED TO 97.2% OF THE TOTAL TAX LEVIES.
10. AN INDEPENDENT AUDIT BY THE CERTIFIED PUBLIC ACCOUNTING FIRM OF MAIN LAFRENTZ & COMPANY OF THE COUNTY'S ACCOUNTING RECORDS FOR THE YEAR 1968 WAS ORDERED BY COMMISSIONERS' COURT ON AUGUST 21, 1967. AT THE CONCLUSION OF THE AUDIT, THEIR ADJUSTMENTS AFFECTING THE GENERAL BOOKS WILL BE IMPLEMENTED.
11. ALL COUNTY OPERATING FUNDS FROM A CASH VIEWPOINT WERE IN A GOOD CONDITION AT THE END OF THE YEAR, EVEN THOUGH \$1,405,000.00 HAD BEEN INVESTED IN SHORT TERM SECURITIES. CASH BALANCES AT THE END OF 1968 AS COMPARED WITH 1967 WERE:

	<u>1968</u>	<u>1967</u>
GENERAL FUND	465 893	457 322
ROAD & BRIDGE FUND	44 499	101 094
PUBLIC BUILDING & IMPROVEMENT FUND	41 136	86 703
JURY FUND	24 597	21 049
INTEREST & SINKING FUNDS	<u>118 842</u>	<u>150 201</u>
TOTAL	<u><u>694 967</u></u>	<u><u>816 369</u></u>

RECOMMENDATIONS FOR FURTHERING COUNTY PROGRESS

IT IS OUR BELIEF THAT OUR COUNTY GOVERNMENT HAS REACHED THE POINT WHERE A COMPLETE REAPPRAISAL OF ITS ABILITY TO ADEQUATELY HANDLE LARGE QUANTITIES OF DATA SHOULD BE MADE, AND HAVE CONCLUDED THAT A TRULY MODERN APPROACH TO LOCAL GOVERNMENT IS WITHIN REACH BY PROPER USE OF THE COMPUTER.

DEPARTMENTS ARE COMPLETELY SWAMPED WITH PAPER WORK AND FILING CHORES. THE EXPANDING FILES ARE BECOMING SO VOLUMINOUS THAT THE COURTHOUSE WILL EVENTUALLY HAVE TO BE EXPANDED OR THE SITUATION CORRECTED IN SOME OTHER MANNER. INFORMATION IS DUPLICATED FROM ONE DEPARTMENT TO ANOTHER AND FINDING IT IS TIME CONSUMING AND DIFFICULT. TO ATTACK THE PROBLEMS, IT SEEMS THAT THE FOLLOWING MIGHT BE A WORKABLE BEGINNING SOLUTION:

1. THE EL PASO COUNTY DISTRICT JUDGES FORM A COMMITTEE FOR EXPEDITING THE FLOW OF INFORMATION THROUGH THE COURT SYSTEM AND URGE THE ADOPTION OF MODERN COMPUTER TECHNIQUES.

2. COUNTY ELECTED OFFICIALS AND DEPARTMENT HEADS FORM A COMMITTEE TO INVENTORY THEIR DEPARTMENTAL DATA PROCESSING NEEDS WITH IMMEDIATE EMPHASIS BEING PLACED ON THOSE APPLICATIONS IN WHICH INFORMATION IS SHARED WITH OTHERS.

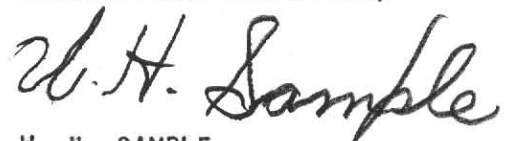
THE ABOVE SUGGESTIONS OFFER ONLY A BEGINNING STEP TOWARD THE CONCEPT OF COMPUTERIZED DATA FILES. AT SOME POINT THERE MUST BE A BEGINNING EVEN THOUGH WE ARE ALL QUITE AWARE THAT IT WILL TAKE NUMEROUS HOURS OF PLANNING, STUDY AND HARD WORK. WE ENVISION IT TAKING YEARS OF EXPERIENCE TO REACH THIS ULTIMATE GOAL BUT NOW IS THE TIME TO START MOVING STEADILY TOWARD THE DESIRED OBJECTIVES.

THE COST OF COUNTY GOVERNMENT CONTINUES TO SKYROCKET. NO ADDITIONAL SOURCES OF REVENUE WERE FOUND DURING THE YEAR 1968. THE STATE OF TEXAS CONTINUES TO FORCE THE COUNTIES TO BEAR ADDITIONAL COSTS WITHOUT PROVIDING ANY NEW LEGISLATION FOR SECURING ADDITIONAL INCOME. THE LEGISLATORS FROM OUR COUNTY ARE BEING REQUESTED TO TRY TO GET A LARGER PERCENTAGE OF AUTOMOBILE LICENSE FEES RETURNED TO THE INDIVIDUAL COUNTIES.

DURING THE 1969 BUDGET HEARINGS, PRACTICALLY EVERY DEPARTMENT REQUESTED AND SUBSEQUENTLY SUBSTANTIATED THEIR PLEA FOR ADDITIONAL APPROPRIATIONS. DUE TO THE LACK OF REVENUE, MOST DEPARTMENTS EITHER RECEIVED APPROXIMATELY THE SAME SUMS AS 1968 OR WERE DRASTICALLY CUT. IT IS MY OPINION, THAT THERE ARE NO REMAINING DEPARTMENTS THAT CAN BE CUT BACK WITHOUT ABOLISHING THE WHOLE DEPARTMENT. RAMPANT INFLATION HAS RESULTED IN DRASTIC INCREASES IN THE COST OF LIVING INDICES WHICH HAS RESULTED IN THE FIXED REVENUE DOLLAR BUYING LESS LABOR AND SUPPLIES.

TO THE BEST OF MY KNOWLEDGE AND BELIEF THIS REPORT OF THE OPERATION OF EL PASO COUNTY FOR THE YEAR ENDED DECEMBER 31, 1968 FAIRLY PRESENTS ITS FINANCIAL CONDITION.

RESPECTFULLY SUBMITTED,



W. H. SAMPLE,
COUNTY AUDITOR

COUNTY OF EL PASO, TEXAS
COMBINED BALANCE SHEET, ALL FUNDS

DECEMBER 31, 1968

A S S E T S

	<u>TOTAL</u>	<u>GENERAL FUND</u>	<u>ROAD & BRIDGE FUND</u>
CASH IN DEPOSITORY	793 005	465 643	44 499
CHANGE FUND	250	250	
CASH WITH FISCAL AGENTS	16 440		
<u>TAXES RECEIVABLE:</u>			
CURRENT	882 073	666 310	56 011
DELINQUENT	122 867	92 812	7 803
TOTAL	1 004 940	759 122	63 814
 LESS:			
RESERVE FOR UNCOLLECTIBLE TAXES	207 597	156 817	13 182
NET TAXES RECEIVABLE	797 343	602 305	50 632
 INVENTORIES - OFFICE SUPPLIES	476	476	
MISCELLANEOUS RECEIVABLES & FEES	169 080	95 953	70 822
PREPAID INSURANCE	8 103	8 103	
INVESTMENTS	1 405 000	1 000 000	50 000
SECURITIES - HELD IN TRUST	1 283 879		
FUNDS AVAILABLE AND TO BE PROVIDED FOR RETIREMENT OF BONDS, MORTGAGES AND INTEREST	5 270 238		
 <u>DEFERRED CHARGES:</u>			
CITY-COUNTY HEALTH BLDG. PROJECT	370 387		
 <u>FIXED ASSETS - GENERAL</u>			
LAND	1 360 494		
BUILDINGS	7 328 699		
HIGHWAYS	1 422 183		
BRIDGES & CULVERTS	86 200		
FLOOD CONTROL	98 937		
EQUIPMENT INVENTORY	1 368 080		
TOTAL FIXED ASSETS	11 664 593		
 TOTAL ASSETS	21 778 794	2 172 730	215 953

COUNTY OF EL PASO, TEXAS
COMBINED BALANCE SHEET, ALL FUNDS

DECEMBER 31, 1968

A S S E T S

JURY FUND	PUBLIC BUILDING & IMPROVEMENTS FUND	INTEREST AND SINKING FUNDS	INTEREST & BONDED DEBT	TRUST FUNDS	FIXED ASSETS FUNDS
24 597	41 136	118 842		98 288	
			16 440		
16 406		143 346			
2 285		19 967			
18 691		163 313			
3 861		33 787			
14 830		129 576			
1 377				928	
20 000	135 000	200 000			
				1 283 879	
			5 270 238		
	370 387				
					1 360 494
					7 328 699
					1 422 183
					86 200
					98 937
					1 368 080
60 804	546 523	448 418	5 286 678	1 383 095	11 664 593

COUNTY OF EL PASO, TEXAS
COMBINED BALANCE SHEET, ALL FUNDS

DECEMBER 31, 1968

L I A B I L I T I E S

	TOTAL	GENERAL FUND	ROAD & BRIDGE FUND
WARRANTS PAYABLE	88 799	76 798	11 958
BONDS PAYABLE - SUBSEQUENT 12-31-68	4 170 000		
INTEREST PAYABLE " "	1 096 678		
MORTGAGE PAYABLE " "	20 000		
 TOTAL LIABILITIES	 5 375 477	 76 798	 11 958

APPROPRIATIONS, RESERVES & FUND BALANCES

APPROPRIATIONS	508 000		
RESERVES:			
1969 ENCUMBRANCES	2 701 023	2 040 326	171 515
CONTINGENCIES	8 435	270	8 165
PREPAID INSURANCE	8 103	8 103	
 TOTAL RESERVES & APPROPRIATIONS	 3 225 561	 2 048 699	 179 680
FUND BALANCES:			
INVENTORY, PAYROLL & CHANGE FUND	83 726	83 726	
INVESTMENT IN FIXED ASSETS	11 664 593		
TRUST & AGENCY FUNDS	1 383 095		
UNRESERVED BALANCES (DEFICIT)	46 342	(36 493)	24 315
TOTAL BALANCES	13 177 756	47 233	24 315
 TOTAL LIABILITIES, RESERVES & FUND BALANCES	 21 778 794	 2 172 730	 215 953

COUNTY OF EL PASO, TEXAS
COMBINED BALANCE SHEET, ALL FUNDS

DECEMBER 31, 1968

L I A B I L I T I E S

JURY FUND	PUBLIC BUILDING & IMPROVEMENT FUND	INTEREST AND SINKING FUNDS	INTEREST & BONDED DEBT	TRUST FUNDS	FIXED ASSETS FUNDS
		43	4 170 000 1 096 678 20 000		
		43	5 286 678		
	508 000				
50 239		438 943			
50 239	508 000	438 943			
					11 664 593
				1 383 095	
10 565	38 523	9 432			
10 565	38 523	9 432		1 383 095	11 664 593
60 804	546 523	448 418	5 286 678	1 383 095	11 664 593

COUNTY OF EL PASO, TEXAS
COMPARATIVE BALANCE SHEETS FOR YEARS ENDING
DECEMBER 31, 1968, 1967, 1966

<u>A S S E T S</u>	<u>1968</u>	<u>1967</u>	<u>1966</u>
CASH IN DEPOSITORY	793 005	918 875	855 462
CHANGE FUND	250	250	250
CASH WITH FISCAL AGENTS	16 440	16 743	17 581
<u>TAXES RECEIVABLE:</u>			
CURRENT	882 073	784 168	759 339
DELINQUENT	<u>122 867</u>	<u>117 624</u>	<u>99 283</u>
TOTAL	1 004 940	901 792	858 622
LESS:			
RESERVE FOR UNCOLLECTIBLE TAXES	<u>207 597</u>	<u>199 379</u>	<u>178 936</u>
NET TAXES RECEIVABLE	797 343	702 413	679 686
INVENTORIES - OFFICE SUPPLIES	476	476	334
MISCELLANEOUS RECEIVABLES & FEES	169 080	168 197	232 293
PREPAID INSURANCE	8 103	15 278	17 467
INVESTMENTS	1 405 000	1 200 000	1 200 000
SECURITIES - HELD IN TRUST	1 283 879	1 130 583	1 087 725
FUNDS AVAILABLE AND TO BE PROVIDED FOR RETIREMENT OF BONDS, MORTGAGES AND INTEREST	5 270 238	5 726 225	6 167 778
DEFERRED CHARGES:			
MT. FRANKLIN ROAD PROJECT			292 885
ASCARATE PARK GOLF COURSE PROJECT			6 237
CITY-COUNTY HEALTH BLDG. PROJECT	370 387	233 729	159 263
OTHER			10 308
<u>FIXED ASSETS - GENERAL</u>			
LAND	1 360 494	1 376 368	1 376 368
BUILDINGS	7 328 699	7 322 122	7 311 710
HIGHWAYS	1 422 183	1 407 524	1 391 706
BRIDGES & CULVERTS	86 200	86 200	86 200
FLOOD CONTROL	98 937	98 937	98 937
EQUIPMENT INVENTORY	<u>1 368 080</u>	<u>1 308 913</u>	<u>1 258 646</u>
TOTAL FIXES ASSETS	11 664 593	11 600 064	11 523 567
 TOTAL ASSETS	 <u>21 778 794</u>	 <u>21 712 833</u>	 <u>22 250 836</u>

COUNTY OF EL PASO, TEXAS
COMPARATIVE BALANCE SHEETS FOR YEARS ENDING
DECEMBER 31, 1968, 1967, 1966

LIABILITIES

	<u>1968</u>	<u>1967</u>	<u>1966</u>
WARRANTS PAYABLE	88 799	103 721	90 360
MATURED BOND INTEREST PAYABLE		83	701
BONDS PAYABLE	4 170 000	4 455 000	4 716 000
INTEREST PAYABLE	1 096 678	1 247 885	1 408 658
MORTGAGE PAYABLE	20 000	40 000	60 000
	<hr/>	<hr/>	<hr/>
TOTAL LIABILITIES	<u>5 375 477</u>	<u>5 846 689</u>	<u>6 275 719</u>

APPROPRIATIONS, RESERVES, & FUND BALANCES

APPROPRIATIONS	508 000	385 615	380 000
RESERVES:			
ENCUMBRANCES	2 701 023	2 600 210	2 533 629
CONTINGENCIES	8 435	7 815	7 815
PREPAID INSURANCE	8 103	15 278	17 467
OTHER		8 476	
	<hr/>	<hr/>	<hr/>
TOTAL RESERVES & APPROPRIATIONS	<u>3 225 561</u>	<u>3 017 394</u>	<u>2 938 911</u>
FUND BALANCES:			
TRUST & AGENCY FUNDS	1 383 095	1 234 022	1 146 020
INVENTORY, PAYROLL & CHANGE FUND	83 726	83 726	85 584
INVESTMENT IN FIXED ASSETS	11 664 593	11 600 064	11 523 567
UNRESERVED BALANCES (DEFICIT)	46 342	(69 062)	281 035
	<hr/>	<hr/>	<hr/>
TOTAL BALANCES	<u>13 177 756</u>	<u>12 848 750</u>	<u>13 036 206</u>
	<hr/>	<hr/>	<hr/>
TOTAL LIABILITIES, RESERVES & FUND BALANCES	<u><u>21 778 794</u></u>	<u><u>21 712 833</u></u>	<u><u>22 250 836</u></u>

COUNTY OF EL PASO, TEXAS
STATEMENT OF CHANGES IN TAXES RECEIVABLE
FOR THE YEAR ENDED DECEMBER 31, 1968

	<u>TOTAL</u>	<u>CURRENT TAXES</u>	<u>DELINQUENT TAXES</u>
TAXES RECEIVABLE, JAN. 1, 1968	901 792	784 167	117 625
ADD:			
TAX LEVY FOR 1968	2 824 334	2 824 334	
TRANSFERS FROM CURRENT TAXES	71 572		71 572
PENALTIES AND INTEREST AND SUPPLEMENTALS	16 791	4 658	12 133
TOTAL ADDITIONS	<u>2 912 697</u>	<u>2 828 992</u>	<u>83 705</u>
TOTAL TAXES RECEIVABLE & ADDITIONS	<u>3 814 489</u>	<u>3 613 159</u>	<u>201 330</u>
DEDUCT:			
COLLECTIONS	2 734 348	2 655 885	78 463
TAXES WRITTEN OFF AS UNCOLLECTIBLE	3 629	3 629	
TRANSFERS TO DELINQUENT	71 572	71 572	
TOTAL DEDUCTIONS	<u>2 809 549</u>	<u>2 731 086</u>	<u>78 463</u>
TAXES RECEIVABLE, DEC. 31, 1968	1 004 940	882 073	122 867
DEDUCT:			
RESERVE FOR UNCOLLECTIBLE TAXES	<u>207 597</u>	<u>84 730</u>	<u>122 867</u>
NET TAXES RECEIVABLE DEC. 31, 1968	<u><u>797 343</u></u>	<u><u>797 343</u></u>	

COUNTY OF EL PASO, TEXAS
SUMMARY STATEMENT OF CASH RECEIPTS AND DISBURSEMENTS ALL FUNDS
FOR THE YEAR ENDED DECEMBER 31, 1968

<u>FUND</u>	<u>BALANCE JANUARY 1</u>	<u>RECEIPTS</u>	<u>DISBURSEMENTS</u>	<u>BALANCE DECEMBER 31</u>
GENERAL	457 072	5 559 203	5 550 632	465 643
ROAD & BRIDGE	101 094	592 019	648 614	44 499
JURY	21 049	132 937	129 389	24 597
PERMANENT IMPROVEMENT	86 703	316 091	361 658	41 136
INT & SINKING FUNDS	150 201	1 037 495	1 068 854	118 842
TRUST FUNDS	102 756	406 305	410 773	98 288
 TOTAL	 918 875	 8 044 050	 8 169 920	 793 005

COUNTY OF EL PASO, TEXASSTATEMENT OF INVESTMENTSDECEMBER 31, 1968

<u>DESCRIPTION</u>	<u>DATE ACQUIRED</u>	<u>INTEREST RATE</u>	<u>MATURITY DATE</u>	<u>BOOK VALUE</u>
CERTIFICATES OF DEPOSIT ISSUED BY 10 MEMBER BANKS OF EL PASO CLEARING HOUSE ASSOCIATION	OCT. 28, 1968	4 $\frac{1}{2}$ %	JAN. 28, 1969	600 000
CERTIFICATES OF DEPOSIT:				
EL PASO NATIONAL BANK	Nov. 20, 1968	5%	FEB. 18, 1969	23 000
STATE NATIONAL BANK OF EL PASO	"	"	"	22 300
SOUTHWEST NAT. BANK OF EL PASO	"	"	"	4 700
SOUTHWEST NAT. BANK OF EL PASO	"	"	MAY 20, 1969	7 050
STATE NATIONAL BANK OF EL PASO	"	"	"	33 450
EL PASO NATIONAL BANK	"	"	"	34 500
CERTIFICATES OF DEPOSIT ISSUED BY 10 MEMBER BANKS OF EL PASO CLEARING HOUSE ASSOCIATION	DEC. 3, 1968	4 $\frac{1}{2}$ %	MAR. 3, 1969	<u>680 000</u>
TOTAL FUNDS				<u><u>1 405 000</u></u>

NOTE: THESE INVESTMENTS WERE MADE FROM COUNTY FUNDS SUPPLIED BY THE VARIOUS
CONSTITUTIONAL FUNDS SHOWN ON THE COMBINED BALANCE SHEET, SCHEDULE "A".

COUNTY OF EL PASO, TEXASGENERAL FUNDBALANCE SHEETDECEMBER 31, 1968ASSETS

CASH		465 643
ASCARATE GOLF COURSE CHANGE FUND		250
TAXES RECEIVABLE:		
CURRENT	666 310	
DELINQUENT	<u>92 812</u>	
TOTAL	759 122	
LESS: RESERVE FOR UNCOLLECTIBLE TAXES	<u>156 817</u>	
NET TAXES RECEIVABLE		602 305
MISCELLANEOUS RECEIVABLES & FEES		95 953
INVESTMENTS - SHORT TERM		1 000 000
INVENTORIES - OFFICE SUPPLIES		476
PREPAID INSURANCE		<u>8 103</u>
TOTAL ASSETS		<u>2 172 730</u>

LIABILITIES, RESERVES AND SURPLUS

WARRANTS PAYABLE		76 798
RESERVES:		
1968 ENCUMBRANCES	2 040 326	
PREPAID INSURANCE	8 103	
CONTINGENCIES	<u>270</u>	2 048 699
FUND BALANCE:		
INVENTORY, PAYROLL & CHANGE FUND	83 726	
UNRESERVED BALANCE - (DEFICIT)	<u>(36 493)</u>	<u>47 233</u>
TOTAL LIABILITIES, RESERVES & FUND BALANCE		<u>2 172 730</u>

COUNTY OF EL PASO, TEXAS
GENERAL FUND
ANALYSIS OF CHANGES IN FUND BALANCE
FOR YEAR ENDED DECEMBER 31, 1968

FUND BALANCE, 1-1-68	(216 117)
ADD:	
REVENUES:	<u>3 467 211</u>
TOTAL FUND BALANCE & ADDITIONS	3 251 094
DEDUCT:	
EXPENDITURES	3 286 985
CHANGES IN ALLOCATION OF TAX RATES	<u>602</u>
TOTAL DEDUCTIONS	<u>3 287 587</u>
FUND BALANCE (DEFICIT), 12-31-68	* <u><u>(36 493)</u></u>

* NOTE: FUNDS TOTALING \$83,726 HAVE BEEN RECORDED AS
APPROPRIATED FROM THE BALANCE OF THIS FUND.

COUNTY OF EL PASO, TEXASGENERAL FUNDSUMMARY STATEMENT OF REVENUE ESTIMATED AND ACTUALFOR THE YEAR ENDED DECEMBER 31, 1968

	<u>ESTIMATED</u>	<u>ACTUAL</u>	<u>ACTUAL OVER OR UNDER* ESTIMATED</u>
<u>TAXES:</u>			
CURRENT	1 969 256	2 092 455	123 199
DELINQUENT	49 410	(61 102)	110 512*
TOTAL TAXES	2 018 666	2 031 353	12 687
<u>BEER & LIQUOR LICENSES</u>	21 000	21 669	669
<u>VITAL STATISTICS</u>	45 000	49 986	4 986
<u>FINES & BOND FORFEITURES</u>	133 500	171 836	38 336
<u>FEES OF OFFICE</u>	747 200	786 888	39 688
<u>RENTALS:</u>			
PARKS	3 900	6 662	2 762
COLISEUM & LIBERTY	49 000	45 270	3 730*
VOTING MACHINES	14 000	14 579	579
TOTAL RENTALS	66 900	66 511	389*
<u>OTHER SOURCES:</u>			
DEPARTMENTAL SALES	8 500	9 968	1 468
STATE PER CAPITA TAX	16 000	18 220	2 220
UTILITY REIMBURSEMENTS	31 000	26 802	4 198*
OTHER REIMBRUSEMENTS	27 000	32 115	5 115
CITY-COUNTY HEALTH U. RECEIPTS	20 000	16 493	3 507*
ASCARATE GOLF COURSE RECEIPTS	79 000	87 073	8 073
VARIOUS CONCESSION RECEIPTS	37 000	40 507	3 507
MISCELLANEOUS RECEIPTS	55 000	55 294	294
MISCELLANEOUS INTEREST	28 000	30 541	2 541
VOTER REGISTRATION	21 955	21 955	
TOTAL OTHER SOURCES	323 455	338 968	15 513
 TOTAL	 3 355 721	 3 467 211	 111 490

COUNTY OF EL PASO, TEXASGENERAL FUNDSUMMARY OF EXPENDITURES COMPARED WITH APPROPRIATIONSFOR THE YEAR ENDED DECEMBER 31, 1968

	<u>APPROPRIATIONS</u>	<u>EXPENDITURES</u>	<u>UNEXPENDED BALANCE - DEFICIT*</u>
ADMINISTRATIVE			
COUNTY JUDGE	22 333	22 297	36
COUNTY CLERK	144 227	138 498	5 729
COUNTY AUDITOR	64 926	64 926	
COUNTY TREASURER	10 758	10 734	24
TAX ASSESSOR-COLLECTOR	291 263	291 332	69*
COUNTY PURCHASING AGENT	24 425	23 850	575
CIVIL DEFENSE	4 500	4 061	439
ELECTIONS	18 100	17 994	106
EMPLOYEE BENEFITS	180 818	174 792	6 026
RETIREMENT ADMINISTRATION	4 315	3 496	819
ASSESSING CHARGES	30 267	30 267	
MISCELLANEOUS & POSTAGE	20 700	19 269	1 431
GENERAL TRAVEL	3 100	2 881	219
COURTHOUSE	215 506	208 032	7 474
INSURANCE	7 224	1 970	5 254
ANNUAL AUDIT	8 000	8 000	
DATA PROCESSING	71 577	71 571	6
REGIONAL PLANNING	8 302	8 301	1
TOTAL ADMINISTRATIVE	<u>1 130 341</u>	<u>1 102 271</u>	<u>28 070</u>
<u>JUDICIAL & LAW ENFORCEMENT</u>			
COUNTY ATTORNEY	76 227	74 248	1 979
SHERIFF & JAIL	506 652	506 035	617
DISTRICT ATTORNEY	78 129	78 038	91
DISTRICT CLERK	76 584	75 742	842
CO. COURT AT LAW NOS. 1, 2.	55 447	55 438	9
J. P. COURTS 1-A, 1-B	30 367	30 088	279
J. P. PRECINCTS 2-8	48 200	49 484	1 284*
CONSTABLE-PRECINCT #1	15 209	15 174	35
CONSTABLE, PRECINCT #2-#8	12 120	12 065	55
MEDICAL INVESTIGATIONS	16 000	15 980	20
JUVENILE BOARD	21 029	21 029	
PROBATION & JUVENILE HOME	135 886	131 357	4 529
REPORTERS & INTERPRETERS SALARIES	45 631	45 583	48
DISTRICT COURTS EXPENSE	4 920	4 921	1*
TOTAL JUDICIAL & LAW ENFORCEMENT	<u>1122 401</u>	<u>1 115 182</u>	<u>7 219</u>

COUNTY OF EL PASO, TEXASGENERAL FUNDSUMMARY OF EXPENDITURES COMPARED WITH APPROPRIATIONSFOR THE YEAR ENDED DECEMBER 31, 1968

	<u>APPROPRIATIONS</u>	<u>EXPENDITURES</u>	<u>UNEXPENDED BALANCE-DEFICIT*</u>
<u>WELFARE</u>			
GENERAL ASSISTANCE	182 875	176 409	6 466
CHILD WELFARE	137 963	137 963	
CHILD GUIDANCE	36 118	30 452	5 666
PAUPERS	6 700	4 839	1 861
VETERANS ASSISTANCE	25 522	25 421	101
TOTAL WELFARE	389 178	375 084	14 094
<u>HEALTH & SANITATION</u>			
CITY-COUNTY HEALTH UNIT	231 705	228 452	3 253
MENTAL HEALTH	5 000	4 675	325
ANIMAL CONTROL CENTER	24 000	24 000	
TOTAL HEALTH & SANITATION	260 705	257 127	3 578
<u>COUNTY PROMOTION & DEVELOPMENT</u>			
INDUSTRIAL BOARD	20 000	20 000	
BOARD OF DEVELOPMENT	60 000	59 945	55
COUNTY LIBRARY	28 087	26 769	1 318
CO-OPERATIVE EXTENSION SERVICE	22 956	22 864	92
TOTAL PROMOTION & DEVELOPMENT	131 043	129 578	1 465
<u>PARKS & RECREATION</u>			
AREA PARKS EXPENSE:			
ASCARATE, LWR VALLEY, MCKEL.			
CANYON, TOM MAYS AND			
HUECO TANKS PARKS	86 304	81 868	4 436
ASCARATE PARK GOLF COURSE	121 537	114 399	7 138
COLISEUM & LIBERTY HALL	114 212	111 476	2 736
TOTAL PARKS & RECREATION	322 053	307 743	14 310
 TOTAL GENERAL FUND	 3 355 721	 3 286 985	 68 736

COUNTY OF EL PASO, TEXASGENERAL FUNDSTATEMENT OF REVENUE - ESTIMATED AND ACTUALFOR THE YEAR ENDED DECEMBER 31, 1968

	ESTIMATED REVENUE	ACTUAL REVENUE	ACTUAL OVER OR UNDER* ESTIMATED
REVENUES:			
AD VALOREM TAXES - CURRENT	1 969 256	2 092 455	123 199
AD VALOREM TAXES - DELINQUENT	49 410	(61 102)	110 512*
BEER, WINE & LIQUOR LICENSES	21 000	21 669	669
VOTER REGISTRATION	21 955	21 955	
CITY-COUNTY HEALTH UNIT PRO-RATA	20 000	16 493	3 507*
STATE PER CAPITA TAX	16 000	18 220	2 220
STATIONERY STOCK-SALES	4 500	4 590	90
JAIL COMMISSARY-SALES	4 000	5 378	1 378
FINES, MISDEMEANOR	133 500	171 836	38 336
RENTALS:			
ASCARATE PARK PAVILION	600	600	
COLISEUM	36 000	36 446	446
LIBERTY HALL	13 000	8 824	4 176*
McKELLIGON CANYON	2 000	2 935	935
VOTING MACHINES	14 000	14 579	579
ASCARATE GOLF COURSE	79 000	87 073	8 073
ASCARATE PARK CONCESSIONS	10 000	8 285	1 715*
WESTERN PLAYLAND	4 000	5 954	1 954
HUECO PARK	1 300	3 127	1 827
COLISEUM CONCESSIONS	23 000	26 268	3 268
UTILITY REIMBURSEMENTS	31 000	26 802	4 198*
OTHER REIMBURSEMENTS	27 000	32 115	5 115
INTEREST FROM INVESTMENTS			
MISCELLANEOUS	55 000	55 294	294
MISCELLANEOUS INTEREST	28 000	30 541	2 541
FEES OF OFFICE:			
ASSESSOR & COLLECTOR	420 000	436 178	16 178
COUNTY ATTORNEY	9 000	10 637	1 637
COUNTY CLERK	207 000	227 098	20 098
COUNTY COURTS AT LAW	6 500	5 436	1 064*
COUNTY JUDGE	7 500	5 602	1 898*
COUNTY SHERIFF	75 000	80 077	5 077
CONSTABLES	1 800	1 527	273*
DISTRICT CLERK	63 000	68 036	5 036
JUSTICES OF THE PEACE	2 400	2 283	117*
TOTAL REVENUE	3 355 721	3 467 211	111 490

COUNTY OF EL PASO, TEXASGENERAL FUNDSTATEMENT OF EXPENDITURES COMPARED WITH AUTHORIZATIONSFOR THE YEAR ENDED DECEMBER 31, 1968

	<u>APPROPRIATIONS</u>	<u>EXPENDITURES</u>	<u>UNEXPENDED BALANCE-DEFICIT*</u>
EXPENSES:			
<u>COUNTY JUDGE:</u>			
SALARIES	20 433	20 433	
OFFICE EXPENSE	1 900	1 864	36
	22 333	22 297	36
<u>COUNTY JUDGES AT LAW #1 & #2:</u>			
SALARIES	54 177	54 168	9
OFFICE EXPENSE	1 270	1 270	
	55 447	55 438	9
<u>COUNTY ASSESSOR & COLLECTOR:</u>			
SALARIES	228 005	228 004	1
OFFICE EXPENSE	31 500	31 584	84*
NEW EQUIPMENT	11 940	11 938	2
EXTRA HELP	19 818	19 806	12
	291 263	291 332	69*
<u>COUNTY ATTORNEY:</u>			
SALARIES	72 427	70 700	1 727
OFFICE EXPENSE	3 100	2 949	151
DELINQUENT TAX COLL. EXP.	700	599	101
	76 227	74 248	1 979
<u>COUNTY AUDITOR:</u>			
SALARIES	61 928	61 928	
OFFICE EXPENSE	2 998	2 998	
	64 926	64 926	
<u>COUNTY PURCHASING AGENT:</u>			
SALARIES	20 305	20 301	4
OFFICE EXPENSE	570	570	
STATIONERY STOCK	3 550	2 979	571
	24 425	23 850	575
<u>COUNTY SHERIFF:</u>			
SALARIES-DEPUTIES	325 166	325 166	
SALARIES-JAILERS	97 871	97 871	
POSTAGE & STATIONERY	1 131	992	139
AUTOMOBILE REPAIRS	5 500	5 594	94*
TELEPHONE & TELEGRAPH	6 674	6 764	90*
GAS & OIL	10 282	9 332	950
TRAVEL	2 781	2 447	334
MISCELLANEOUS	8 942	8 544	398
JAIL SUBSISTENCE	35 525	35 525	
JURY SUPPLIES	217	197	20
MEDICINE & SUPPLIES	4 000	5 040	1 040*
AUTOMOBILES-NEW	8 563	8 563	
	506 652	506 035	617

COUNTY OF EL PASO, TEXASGENERAL FUNDSTATEMENT OF EXPENDITURES COMPARED WITH AUTHORIZATIONSFOR THE YEAR ENDED DECEMBER 31, 1968

<u>EXPENSES:</u>	<u>APPROPRIATIONS</u>	<u>EXPENDITURES</u>	<u>UNEXPENDED BALANCE-DEFICIT*</u>
<u>COUNTY TREASURER:</u>			
SALARIES	9 758	9 757	1
OFFICE EXPENSE	1 000	977	23
	<u>10 758</u>	<u>10 734</u>	<u>24</u>
<u>COUNTY CLERK:</u>			
SALARIES	111 657	111 640	17
OFFICE EXPENSE	26 400	22 731	3 669
NEW EQUIPMENT	3 170	3 026	144
LEGAL FEES	3 000	1 101	1 899
	<u>144 227</u>	<u>138 498</u>	<u>5 729</u>
<u>DATA PROCESSING DEPARTMENT:</u>			
SALARIES	41 093	41 087	6
OFFICE EXPENSE	7 270	7 270	
TRAVEL	150	150	
RENTALS	23 064	23 064	
	<u>71 577</u>	<u>71 571</u>	<u>6</u>
<u>DISTRICT ATTORNEY:</u>			
SALARIES	66 600	66 439	161
OFFICE EXPENSE	3 479	3 478	1
POST CONVICTION AFFAIRS	2 400	2 333	67
CONDUCT OF CRIM. AFFAIRS	5 650	5 788	138*
	<u>78 129</u>	<u>78 038</u>	<u>91</u>
<u>DISTRICT CLERK:</u>			
SALARIES	60 505	60 504	1
OFFICE EXPENSE	7 457	7 128	329
NEW EQUIPMENT	1 607	1 824	217*
LEGAL FEES	7 015	6 286	729
	<u>76 584</u>	<u>75 742</u>	<u>842</u>
<u>JUSTICE OF THE PEACE, 1-A:</u>			
SALARIES	14 832	14 831	1
OFFICE EXPENSE	500	483	17
	<u>15 332</u>	<u>15 314</u>	<u>18</u>
<u>JUSTICE OF THE PEACE, 1-B:</u>			
SALARIES	14 535	14 333	202
OFFICE EXPENSE	500	441	59
	<u>15 035</u>	<u>14 774</u>	<u>261</u>
<u>JUSTICE COURTS:</u>			
VITAL STATISTICS	300	65	235
TRIAL FEES	42 900	44 444	1 544*
INQUEST FEES	4 440	4 420	20
AUTOPSY FEES	16 000	15 980	20
STATIONERY STOCK	560	555	5
SALARIES-CONSTABLES, OUTSIDE COUNTY SEAT	12 120	12 065	55
	<u>76 320</u>	<u>77 529</u>	<u>1 209*</u>

COUNTY OF EL PASO, TEXASGENERAL FUNDSTATEMENT OF EXPENDITURES COMPARED WITH AUTHORIZATIONSFOR THE YEAR ENDED DECEMBER 31, 1968

	APPROPRIATIONS	EXPENDITURES	UNEXPENDED BALANCE-DEFICIT*
<u>EXPENSES:</u>			
<u>CONSTABLE-PRECINCT #1:</u>			
SALARIES	11 909	11 909	
OFFICE EXPENSE	300	264	36
AUTO ALLOWANCE	3 000	3 001	1*
	<u>15 209</u>	<u>15 174</u>	<u>35</u>
<u>CITY-COUNTY HEALTH UNIT:</u>			
OPERATING EXPENSE-COUNTY PORTION	231 705	228 452	3 253
	<u>231 705</u>	<u>228 452</u>	<u>3 253</u>
<u>COMMUNITY RELIEF:</u>			
<u>PAUPERS:</u>			
BURIALS	4 500	4 197	303
CLOTHING	1 500	557	943
TRAVEL	700	85	615
<u>GENERAL ASSISTANCE:</u>			
SALARIES	36 029	35 432	597
FOOD, RENT, ETC.	99 055	93 320	5 735
OFFICE EXPENSE	1 650	1 589	61
TRAVEL-STAFF	3 840	3 840	
TRAVEL-OTHER	500	496	4
TELEPHONE & TELEGRAPH	1 275	1 275	
UTILITIES	975	907	68
OFF.EXP.-U.S.FOOD STAMP PROG.	901	900	1
U.S.FOOD STAMP PROGRAM	38 650	38 650	
	<u>189 575</u>	<u>181 248</u>	<u>8 327</u>
<u>MENTAL HEALTH:</u>			
CLOTHING	975	975	
TRIALS & CLERICAL	2 625	2 396	229
TRANSPORTATION	1 400	1 304	96
	<u>5 000</u>	<u>4 675</u>	<u>325</u>
<u>PROBATION & JUVENILE HOME:</u>			
SALARIES-PROBATION DPT.	77 148	75 462	1 686
SALARIES-JUVENILE HOME	35 888	35 217	671
CAR ALLOWANCE	1 800	1 737	63
SUBSISTENCE & MAINTENANCE	8 600	8 590	10
UTILITIES	4 850	3 579	1 271
TRANSPORTATION	3 000	2 456	544
OFFICE EXPENSE	2 200	1 924	276
AUTOMOBILES-NEW	2 400	2 392	8
	<u>135 886</u>	<u>131 357</u>	<u>4 529</u>

COUNTY OF EL PASO, TEXASGENERAL FUNDSTATEMENT OF EXPENDITURES COMPARED WITH AUTHORIZATIONSFOR THE YEAR ENDED DECEMBER 31, 1968

	APPROPRIATIONS	EXPENDITURES	UNEXPENDED BALANCE-DEFICIT*
EXPENSES:			
<u>JUVENILE BOARD:</u>			
SALARIES	21 029	21 029	
	21 029	21 029	
<u>CHILD WELFARE:</u>			
OPERATING EXP.-COUNTY PORTION	137 963	137 963	
	137 963	137 963	
<u>CHILD GUIDANCE:</u>			
SALARIES	36 118	30 452	5 666
	36 118	30 452	5 666
<u>CO-OPERATIVE EXTENSION SERVICE:</u>			
SALARIES	16 081	16 005	76
OFFICE EXPENSE	2 595	2 581	14
HOME DEMONSTRATION	225	223	2
TRAVEL-STAFF	3 450	3 450	
TRAVEL OTHER	605	605	
	22 956	22 864	92
<u>CIVIL DEFENSE:</u>			
OPERATING EXPENSE	4 500	4 061	439
	4 500	4 061	439
<u>GENERAL EXPENSE:</u>			
ELECTION EXPENSE	18 100	17 994	106
GROUP HOSPITAL INSURANCE	34 063	32 005	2 058
MISCELLANEOUS	4 100	2 689	1 411
POSTAGE	16 300	16 280	20
RETIREMENT PROGRAM EXPENSE	4 315	3 496	819
CONTRIBUTIONS-RETIREMENT	67 655	66 033	1 622
CONTRIBUTIONS-SOCIAL SECURITY	79 100	76 754	2 346
ASSESSING CHGE.-TAX ASSESSOR	30 267	30 267	
TRAVEL	3 100	2 881	219
TEXAS STATE GUARD	300	300	
OUTSIDE AUDIT	8 000	8 000	
REGIONAL PLANNING	8 302	8 301	1
	273 602	265 000	8 602
<u>COUNTY LIBRARY:</u>			
SALARIES	17 467	16 686	781
RENT	3 000	3 000	
GAS, OIL & MAINTENANCE	1 000	938	62
UTILITIES	900	705	195
NEW BOOKS	3 220	2 974	246
OFFICE SUPPLIES	700	603	97
JANITOR SERVICE	600	600	
CAR ALLOWANCE	400	400	
MISCELLANEOUS	800	863	63*
	28 087	26 769	1 318

COUNTY OF EL PASO, TEXAS

GENERAL FUND

STATEMENT OF EXPENDITURES COMPARED WITH AUTHORIZATIONS

FOR THE YEAR ENDED DECEMBER 31, 1968

EXPENSES:	APPROPRIATIONS	EXPENDITURES	UNEXPENDED BALANCE-DEFICIT*
<u>BOARD OF DEVELOPMENT:</u>			
SALARIES	12 687	12 636	51
CAR ALLOWANCE	1 200	1 200	
OFFICE EXPENSE	3 775	3 771	4
TRAVEL & MISCELLANEOUS	1 525	1 525	
ADVERTISING	40 813	40 813	
	60 000	59 945	55
<u>INDUSTRIAL BOARD:</u>			
OPERATING ALLOWANCE	20 000	20 000	
	20 000	20 000	
<u>ANIMAL CONTROL CENTER:</u>			
OPERATING ALLOWANCE			
COUNTY PORTION	24 000	24 000	
	24 000	24 000	
<u>VETERANS ASSISTANCE:</u>			
SALARIES	22 347	22 346	1
TRAVEL	1 800	1 700	100
OFFICE EXPENSE	1 375	1 375	
	25 522	25 421	101
<u>DISTRICT COURTS:</u>			
OFFICE EXPENSE	3 000	3 001	1*
6TH. JUDICIAL DIST. EXPENSE	1 920	1 920	
REPORTERS' SALARIES	40 925	40 893	32
INTERPRETERS' SALARIES	4 706	4 690	16
	50 551	50 504	47
<u>COURTHOUSE:</u>			
SALARIES-HEATING PLANT	37 255	37 255	
SALARIES-JANITOR	66 672	66 672	
FUEL	9 000	9 169	169*
LIGHT & POWER	47 500	44 807	2 693
WATER	6 500	6 365	135
TELEPHONE & TELEGRAPH	8 500	7 258	1 242
INSURANCE	7 224	1 970	5 254
JANITOR SUPPLIES	4 900	4 716	184
CUSTODIAL MAINTENANCE	3 000	1 637	1 363
BUILDING CHARGES	31 679	29 892	1 787
FURNITURE & FIXTURES	500	261	239
	222 730	210 002	12 728

COUNTY OF EL PASO, TEXASGENERAL FUNDSTATEMENT OF EXPENDITURES COMPARED WITH AUTHORIZATIONSFOR THE YEAR ENDED DECEMBER 31, 1968

<u>EXPENSES:</u>	<u>APPROPRIATIONS</u>	<u>EXPENDITURES</u>	<u>UNEXPENDED BALANCE-DEFICIT*</u>
<u>PARKS & RECREATION:</u>			
SALARIES-ADMINISTRATIVE	6 192	6 192	
SALARIES-ALL PARKS	35 048	35 370	322*
YOUTH ACTIVITY PROGRAM	8 058	8 018	40
PARKS OPERATING EXPENSE	15 100	15 100	
IMPROVEMENTS:			
ASCARATE PARK	14 000	12 020	1 980
LOWER VALLEY	3 500	2 640	860
MCKELLIGON CANYON	1 700	235	1 465
TOM MAYS MEMORIAL PARK	2 306	2 162	144
HUECO TANKS	400	131	269
	<u>86 304</u>	<u>81 868</u>	<u>4 436</u>
<u>ASCARATE PARK GOLF COURSE:</u>			
SALARIES	80 537	80 533	4
SUPPLIES & REPAIRS	14 449	10 425	4 024
GAS & OIL	2 500	1 979	521
UTILITIES	11 200	9 745	1 455
FERTILIZER & CHEMICALS	6 000	4 866	1 134
ASCARATE PK GOLF CRSE PROJECT	6 851	6 851	
	<u>121 537</u>	<u>114 399</u>	<u>7 138</u>
<u>COLISEUM & LIBERTY HALL:</u>			
SALARIES-ADMINISTRATIVE	13 909	13 870	39
EXPENSES-ADMINISTRATIVE	1 000	593	407
EXPENSES-AUTO	1 200	1 070	130
	<u>16 109</u>	<u>15 533</u>	<u>576</u>
<u>COLISEUM:</u>			
SALARIES	47 110	47 136	26*
SUPPLIES	9 164	8 746	418
UTILITIES	7 600	7 600	
REPAIRS	2 300	2 095	205
IMPROVEMENTS	24 600	23 505	1 095
	<u>90 774</u>	<u>89 082</u>	<u>1 692</u>
<u>LIBERTY HALL:</u>			
SALARIES	5 611	5 611	
SUPPLIES	1 250	1 250	
IMPROVEMENTS	468		468
	<u>7 329</u>	<u>6 861</u>	<u>468</u>
 <u>TOTAL EXPENSES</u>	 <u>3 355 721</u>	 <u>3 286 985</u>	 <u>68 736</u>

COUNTY OF EL PASO, TEXASROAD & BRIDGE FUNDBALANCE SHEETDECEMBER 31, 1968ASSETS

CASH		44 499
TAXES RECEIVABLE:		
CURRENT	56 011	
DELINQUENT	<u>7 803</u>	
	63 814	
LESS: RESERVE FOR UNCOLLECTIBLE TAXES	<u>13 182</u>	
NET TAXES RECEIVABLE		50 632
MISCELLANEOUS RECEIVABLES & FEES		70 822
INVESTMENTS - SHORT TERM		50 000
		<hr/>
TOTAL ASSETS		<u><u>215 953</u></u>

LIABILITIES, RESERVES AND SURPLUS

WARRANTS PAYABLE		11 958
RESERVES:		
1968 ENCUMBRANCES	171 515	
CONTINGENCIES	<u>8 165</u>	179 680
FUND BALANCE:		
UNRESERVED BALANCE		<u>24 315</u>
TOTAL LIABILITIES, RESERVES & SURPLUS		<u><u>215 953</u></u>

COUNTY OF EL PASO, TEXASROAD & BRIDGE FUNDSTATEMENT OF REVENUES - ESTIMATED AND ACTUALFOR THE YEAR ENDED DECEMBER 31ST., 1968

	<u>ESTIMATED</u>	<u>ACTUAL</u>	<u>ACTUAL OVER OR UNDER *ESTIMATED</u>
<u>REVENUES:</u>			
AD VALOREM TAXES	87 510	95 729	8 219
AD VALOREM TAXES-DELINQUENT	2 190	(8 902)	11 092*
QUARRY ROYALTIES		1 005	1 005
AUTO LICENSE FEES	175 000	175 000	
OIL, GAS, GREASE, ETC., REF.	15 000	12 605	2 395*
LATERAL ROAD FUNDS	54 000	54 690	690
MISCELLANEOUS	3 000	2 471	529*
INTEREST		2 087	2 087
CASH-SURPLUS	121 300		121 300*
TOTAL REVENUES	<u>458 000</u>	<u>334 685</u>	<u>123 315*</u>

STATEMENT OF EXPENDITURES COMPARED WITH AUTHORIZATIONSFOR THE YEAR ENDED DECEMBER 31, 1968

	<u>APPROPRIATIONS</u>	<u>EXPENDITURES</u>	<u>UNEXPENDED BALANCE - *DEFICIT</u>
<u>EXPENSES:</u>			
<u>ADMINISTRATIVE:</u>			
COMMISSIONERS' SALARIES	34 152	33 995	157
COMMISSIONERS' MILEAGE	7 500	7 500	
	<u>41 652</u>	<u>41 495</u>	<u>157</u>
<u>ENGINEER DEPARTMENT:</u>			
SALARIES-ADMINISTRATIVE	29 356	28 261	1 095
CAR EXPENSE	700	718	18*
OFFICE EXPENSE	2 950	2 479	471
TRAVEL EXPENSE	372	372	
	<u>33 378</u>	<u>31 830</u>	<u>1 548</u>
<u>CONSTRUCTION AND MAINTENANCE OF ROADS, BRIDGES, ETC.</u>			
SALARIES	206 559	206 383	176
LATERAL ROAD MAINTENANCE	101 361	95 792	5 569
OTHER PRECINCT EXPENSE	25 881	23 745	2 136
NEW EQUIPMENT	20 000	19 820	180
	<u>353 801</u>	<u>345 740</u>	<u>8 061</u>
<u>MISCELLANEOUS:</u>			
RIGHT OF WAY	4 769	4 769	
CONTRIBUTIONS: SOCIAL SECURITY	12 300	11 756	544
RETIREMENT	9 100	9 923	823*
CEMETERY & CLINICS	300	249	51
ASSESSING CHARGES-TAX ASSESSOR	2 700	2 544	156
	<u>29 169</u>	<u>29 241</u>	<u>72*</u>
TOTAL EXPENDITURES	<u>458 000</u>	<u>448 306</u>	<u>9 694</u>

COUNTY OF EL PASO, TEXASJURY FUNDBALANCE SHEET

DECEMBER 31, 1968

ASSETS

CASH		24 597
TAXES RECEIVABLE:		
CURRENT	16 406	
DELINQUENT	<u>2 285</u>	
	18 691	
LESS:		
RESERVE FOR UNCOLLECTIBLE TAXES	<u>3 861</u>	
NET TAXES RECEIVABLE		14 830
MISCELLANEOUS RECEIVABLES & FEES		1 377
INVESTMENTS - SHORT TERM		<u>20 000</u>
TOTAL ASSETS		<u><u>60 804</u></u>

LIABILITIES, RESERVES AND SURPLUS

RESERVE FOR ENCUMBRANCES	50 239
FUND BALANCE	<u>10 565</u>
TOTAL LIABILITIES, RESERVES AND FUND BALANCE	<u><u>60 804</u></u>

COUNTY OF EL PASO, TEXASJURY FUNDSTATEMENT OF REVENUES - ESTIMATED AND ACTUALFOR THE YEAR ENDED DECEMBER 31ST., 1968

<u>REVENUES:</u>	<u>ESTIMATED</u>	<u>ACTUAL</u>	<u>ACTUAL OVER OR UNDER* ESTIMATED</u>
AD VALOREM TAXES	46 830	49 835	3 005
AD VALOREM TAXES-DELINQUENT	1 180	(1 584)	2 764*
JURY FEES	4 200	4 781	581
OCCUPATION LICENSES	4 490	3 163	1 327*
MISCELLANEOUS INTEREST		813	813
	<u>56 700</u>	<u>57 008</u>	<u>308</u>

STATEMENT OF EXPENDITURES COMPARED WITH AUTHORIZATIONS
FOR THE YEAR ENDED DECEMBER 31ST. 1968

<u>EXPENSES:</u>	<u>APPROPRIATIONS</u>	<u>EXPENDITURES</u>	<u>UNEXPENDED BALANCE - *DEFICIT</u>
<u>JURY EXPENSE:</u>			
JURORS' MEALS & EXPENSE	1 380	1 432	52*
JURORS' SCRIPT	51 683	54 449	2 766*
JURY BAILIFF	2 737	2 737	
	<u>55 800</u>	<u>58 618</u>	<u>2 818*</u>
 <u>GENERAL:</u>			
ASSESSING	900	745	155
 TOTAL EXPENSES	<u>56 700</u>	<u>59 363</u>	<u>2 663*</u>

COUNTY OF EL PASO, TEXAS
PUBLIC BUILDING & IMPROVEMENT FUND
STATEMENT OF REVENUES - ESTIMATED AND ACTUAL
FOR THE YEAR ENDED DECEMBER 31, 1968

	<u>ESTIMATED</u>	<u>ACTUAL</u>	<u>ACTUAL OVER OR UNDER* ESTIMATED</u>
<u>REVENUES:</u>			
AD VALOREM TAXES	20 970	21 582	612
AD VALOREM TAXES - DELINQ.	530	1 014	484
MISCELLANEOUS	450		450*
INTEREST		1 925	1 925
 TOTAL REVENUES	 21 950	 24 521	 2 571

STATEMENT OF EXPENDITURES COMPARED WITH AUTHORIZATIONS
FOR THE YEAR ENDING DECEMBER 31, 1968

	<u>APPROPRIATIONS</u>	<u>EXPENDITURES</u>	<u>UNEXPENDED BALANCE</u>
<u>EXPENSES:</u>			
ASSESSING	450		450
 CITY-COUNTY HEALTH UNIT	 21 500		 21 500 ^(N)
 TOTAL EXPENSES	 21 950		 21 950

(N) NOTE: ALL EXPENDITURES AGAINST THE CONSTRUCTION OF UNIT CHARGED
 INTO A DEFERRED CHARGE ACCOUNT UNTIL DATE OF FINAL COMPLETION.

COUNTY OF EL PASO, TEXASINTEREST & SINKING FUNDSBALANCE SHEETDECEMBER 31, 1968ASSETS

CASH		118 842
TAXES RECEIVABLE:		
CURRENT	143 346	
DELINQUENT	19 967	
	<u>163 313</u>	
LESS:		
RESERVE FOR UNCOLLECTIBLE TAXES	<u>33 737</u>	
NET TAXES RECEIVABLE		129 576
INVESTMENTS - SHORT TERM		<u>200 000</u>
TOTAL ASSETS		<u><u>448 418</u></u>

LIABILITIES, RESERVES AND SURPLUS

WARRANTS PAYABLE	43
RESERVE FOR ENCUMBRANCES	438 943
FUND BALANCE	<u>9 432</u>
TOTAL LIABILITIES, RESERVES AND FUND BALANCE	<u><u>448 418</u></u>

COUNTY OF EL PASO, TEXASINTEREST AND SINKING FUNDSSTATEMENT OF REVENUES - ESTIMATED AND ACTUALFOR THE YEAR ENDED DECEMBER 31st., 1968

	<u>ESTIMATED</u>	<u>ACTUAL</u>	<u>ACTUAL OVER OR UNDER* ESTIMATED</u>
<u>REVENUES:</u>			
AD VALOREM TAXES	466 300	494 171	27 871
AD VALOREM TAXES-DELINQUENT	11 700	(11 078)	22 778*
INTEREST FROM INVESTMENTS		6 191	6 191
MISCELLANEOUS	1 695	1 397	298*
TOTAL REVENUES	<u>479 695</u>	<u>490 681</u>	<u>10 986</u>

STATEMENT OF EXPENDITURES COMPARED WITH AUTHORIZATIONS
FOR THE YEAR ENDED DECEMBER 31st., 1968

	<u>APPROPRIATIONS</u>	<u>EXPENDITURES</u>	<u>UNEXPENDED BALANCE</u>
<u>EXPENSES:</u>			
ASSESSING CHARGES - TAX ASSESSOR	6 812	6 512	300
INTEREST ON PUBLIC DEBT	158 732	150 548	8 184
FISCAL AGENTS' FEES-SERVICING PUBLIC DEBT	1 700	1 547	153
	<u>167 244</u>	<u>158 607</u>	<u>8 637</u>
 CASH PAID TO FISCAL AGENTS FOR RETIREMENT OF PUBLIC DEBT	 312 451	 289 000	 23 451
 TOTAL EXPENSES	 <u>479 695</u>	 <u>447 607</u>	 <u>32 088</u>

COUNTY OF EL PASO, TEXASTRUST FUNDSBALANCE SHEETDECEMBER 31, 1968A S S E T S

	<u>TOTAL</u>	<u>EMPLOYEES RETIREMENT FUND</u>	<u>SOCIAL SECURITY FUND</u>	<u>COUNTY LAW LIBRARY FUND</u>	<u>PERMANENT SCHOOL FUND</u>
CASH	98 288	43 954	40 624	10 699	3 011
RECEIVABLES	928	60		868	
SECURITIES	1 283 879	1 196 925			86 954
TOTAL ASSETS	1 383 095	1 240 939	40 624	11 567	89 965

LIABILITIES & FUND BALANCES

FUND BALANCES	1 383 095	1 240 939	40 624	11 567	89 965
TOTAL LIABILITIES & FUND BALANCES	1 383 095	1 240 939	40 624	11 567	89 965

COUNTY OF EL PASO, TEXASTRUST FUNDSSTATEMENT OF CASH RECEIPTS AND DISBURSEMENTS
FOR THE YEAR ENDED DECEMBER 31, 1968

	<u>TOTAL</u>	<u>EMPLOYEES RETIREMENT FUND</u>	<u>SOCIAL SECURITY FUND</u>	<u>COUNTY LAW LIBRARY FUND</u>	<u>PERMANENT SCHOOL FUND</u>
CASH BALANCE, JAN. 1, 1968	102 756	43 082	34 402	5 061	20 211
RECEIPTS:					
EMPLOYEES' SAVINGS FUND	75 956	75 956			
COUNTY CONTRIBUTION:					
MEMBR'SHP. ACCUM. FUND	43 235	43 235			
PRIOR SVCE. ANNUITY RESERVE FUND	32 661	32 661			
INTEREST ON INVESTMENTS	52 645	49 386			3 259
LIBRARY FEES FROM SUITS	10 315			10 315	
EMPLOYEE PAYMENTS	88 065		88 065		
COUNTY PAYMENTS	88 510		88 510		
INVESTMENTS MATURED/SOLD	14 918	12 387			2 531
TOTAL RECEIPTS	406 305	213 625	176 575	10 315	5 790
TOTAL AVAILABLE FUNDS	509 061	256 707	210 977	15 376	26 001
DISBURSEMENTS:					
INVESTMENTS PURCHASED PAR VALUE	170 000	150 000			20 000
PREMIUM ON INVESTMENT	2 097	2 066			31
TOTAL	172 097	152 066			20 031
LESS: DISCOUNT ON INVESTMENTS	8 237	8 237			
TOTAL	163 860	143 829			20 031
EMPLOYEES' SAVINGS FUND	23 311	23 311			
PRIOR SVCE. ANNUITY RESERVE FUND	27 790	27 790			
MEMBERSHIP ANNUITY RESERVE FUND	17 823	17 823			
CUSTODIAL SERVICE AND PUBLICATIONS	4 677			4 677	
PAYMENTS TO STATE OF TEXAS	170 353		170 353		
PYMNTS. TO SCHOOL DISTRICTS	2 959				2 959
TOTAL DISBURSEMENTS	410 773	212 753	170 353	4 677	22 990
CASH BALANCE - DEC. 31, 1968	98 288	43 954	40 624	10 699	3 011

COUNTY OF EL PASO, TEXAS
COMPARATIVE STATEMENT OF FIXED ASSETS
DECEMBER 31, 1968

<u>GENERAL FIXED ASSETS</u>	<u>JANUARY 1 1968</u>	<u>CHANGES YEAR 1968</u>	<u>DECEMBER 31 1968</u>
LAND	1 376 368	(15 874)	1 360 494
BUILDINGS	7 322 122	6 577	7 328 699
ROAD & HIGHWAYS	1 407 524	14 659	1 422 183
BRIDGES & CULVERTS	86 200		86 200
FLOOD CONTROL PROJECTS	98 937		98 937
EQUIPMENT	686 985	138 360	825 345
FURNITURE & FURNISHINGS	289 199	(79 104)	210 095
VOTING MACHINES	332 729	(89)	332 640
 TOTAL	 <u>11 600 064</u>	 <u>64 529</u>	 <u>11 664 593</u>

see
CFR 2.6

COUNTY OF EL PASO, TEXASDETAILED STATEMENT OF GENERAL FIXED ASSETSDECEMBER 31, 1968

<u>GENERAL FIXED ASSETS</u>		<u>TOTAL</u>
LAND		1 360 494
BUILDINGS		7 328 699
ROADS & HIGHWAYS		1 422 183
BRIDGES & CULVERTS		86 200
FLOOD CONTROL PROJECTS		98 937
EQUIPMENT AND FURNISHINGS:		
AUTOMOBILES & TRUCKS		174 893
EQUIPMENT:		
HEAVY DUTY	161 815	
LIGHT	172 692	
SHOP	22 555	
COMMUNICATIONS	27 740	
RECREATION & PLAYGROUND	44 176	
FURNITURE & FURNISHINGS	210 095	
OFFICE MACHINES	176 057	
LIBRARY BOOKS	<u>45 417</u>	860 547
VOTING MACHINES		<u>332 640</u>
TOTAL		<u>11 664 593</u>
INVESTMENT IN GENERAL FIXED ASSETS (ESTIMATED)		
FROM GENERAL OBLIGATION BONDS		7 257 000
FROM EXPENDITURES OF CURRENT REVENUES		<u>4 407 593</u>
TOTAL		<u>11 664 593</u>

NOTE:

COUNTY RECORDS PRIOR TO YEAR 1958 PROVIDED FEW DETAILS CONCERNING THE FIXED ASSETS. THE BASIS FOR OUR CURRENT RECORDS WAS ESTABLISHED BY THE CERTIFIED PUBLIC ACCOUNTING FIRM ENGAGED TO PERFORM THE ANNUAL AUDIT FOR THE YEAR 1958. INFORMATION WAS DERIVED FROM VARIOUS DOCUMENTARY SOURCES AS WELL AS FROM FAIR VALUE APPRAISALS BY VARIOUS DEPARTMENTS. AS EXPEDITIOUSLY AS POSSIBLE, CONTROLS ARE BEING ESTABLISHED OVER THE COUNTY'S PROPERTIES.

COUNTY OF EL PASO, TEXAS
ANALYSIS OF CHANGES IN BONDED DEBT
DURING CALENDAR YEAR 1968

	DATE OF			
<u>BOND ISSUE</u>	<u>ISSUE</u>	<u>MATURITY</u>	<u>RATE OF INTEREST</u>	
PERMANENT IMPROVEMENT REFUNDING	6- - 1-49	12- 1-68	2 1/2 -	2 3/4%
PERMANENT IMPROVEMENT REFUNDING	1 - 1-50	1 - 1-70	2 1/2 -	2 3/4%
COURTHOUSE	9 -10-55	9 -10-85	2 3/4 -	3%
GENERAL REFUNDING	6 - 1-55	6 - 1-68		2 3/4%
PERMANENT IMPROVEMENT REFUNDING	6 - 1-55	6 - 1-76		2 3/4%
ROAD & BRIDGE REFUNDING	10 -10-55	10-10-70		2 3/4%
ROAD & BRIDGE REFUNDING	10 -15-56	10-15-71		3%
ROAD & BRIDGE REFUNDING	11 - 1-57	5 - 1-68		3 1/2%
BULL BARN	4 -10-58	4 -10-70		3 1/2%
PERMANENT IMPROVEMENT REFUNDING	12 - 1-59	12- 1-79	3 3/4 4-	4 1/4%
PERMANENT IMPROVEMENT REFUNDING	4 - 1-60	4 - 1-75		4 1/4%
ROAD & BRIDGE REFUNDING	8 - 1-60	8 - 1-75		4 1/4%
ROAD & BRIDGE REFUNDING	5 - 1-61	5 - 1-76	3- 3 1/5-	3 3/4%
PARK	10 - 1-61	10- 1-81	3 2/5 -	3 1/2%
			3 3/5- 3 7/10-	5%
PERMANENT IMPROVEMENT REFUNDING	8 - 1-65	8 - 1-80	3 -	3 1/2%
			3 1/10 -	4 3/4%
ROAD & BRIDGE REFUNDING	10 - 1-65	10- 1-80	3 1/4 -	3 1/10
			3 2/5 -	5%
TOTAL BONDED INDEBTEDNESS				
MORTGAGE DEBT			NONE	
TOTAL INDEBTEDNESS				

COUNTY OF EL PASO, TEXAS
ANALYSIS OF CHANGES IN BONDED DEBT
DURING CALENDAR YEAR 1968

MATURITIES			B O N D S		
PRINCIPAL	INTEREST	AUTHORIZED & ISSUED	1-1-68	1968	12-31-68
DECEMBER	JUN. - DEC.	200 000	13 000	13 000	
JANUARY	JAN. - JUL.	266 000	48 000	16 000	32 000
SEPTEMBER	MAR. - SEP.	1 000 000	682 000	31 000	651 000
JUNE	JUN. - DEC.	130 000	14 000	14 000	
JUNE	JUN. - DEC.	130 000	72 000	6 000	66 000
OCTOBER	APR. - OCT.	164 000	45 000	15 000	30 000
OCTOBER	APR. - OCT.	188 000	60 000	15 000	45 000
MAY	MAY - NOV.	100 000	12 000	12 000	
APRIL	APR. - OCT.	115 000	42 000	13 000	29 000
DECEMBER	JUN. - DEC.	567 000	507 000	30 000	477 000
APRIL	APR. - OCT.	263 000	200 000	20 000	180 000
AUGUST	FEB. - AUG.	100 000	70 000	5 000	65 000
MAY	MAY - NOV.	550 000	450 000	20 000	430 000
OCTOBER	APR. - OCT.	1 750 000	1 625 000	45 000	1 580 000
AUGUST	FEB. - AUG.	380 000	325 000	25 000	300 000
OCTOBER	APR. - OCT.	300 000	290 000	5 000	285 000
		<u>6 203 000</u>	<u>4 455 000</u>	<u>285 000</u>	<u>4 170 000</u>
JANUARY		<u>80 000</u>	<u>40 000</u>	<u>20 000</u>	<u>20 000</u>
		<u>6 283 000</u>	<u>4 495 000</u>	<u>305 000</u>	<u>4 190 000</u>

COUNTY OF EL PASO, TEXAS
BOND PRINCIPAL & INTEREST BY VARIOUS ISSUES
DUE DECEMBER 31, 1968

<u>DESCRIPTION</u>	<u>YEAR ISSUED</u>	<u>PRINCIPAL</u>	<u>INTEREST</u>
PERMANENT IMPROVEMENT REFUNDING	1950	32 000	880
MORTGAGE DEBT		20 000	
PERMANENT IMPROVEMENT REFUNDING	1965	300 000	59 312
COURTHOUSE	1955	651 000	186 362
PERMANENT IMPROVEMENT REFUNDING	1955	66 000	7 837
ROAD & BRIDGE REFUNDING	1955	30 000	1 238
ROAD & BRIDGE REFUNDING	1956	45 000	2 700
BULL BARN	1958	29 000	1 032
PERMANENT IMPROVEMENT REFUNDING	1959	477 000	126 038
PERMANENT IMPROVEMENT REFUNDING	1960	180 000	29 113
ROAD & BRIDGE REFUNDING	1960	65 000	12 623
ROAD & BRIDGE REFUNDING	1961	430 000	64 850
PARK	1961	1 580 000	474 745
ROAD & BRIDGE REFUNDING	1965	285 000	129 948
<hr/>			
TOTAL		4 190 000	1 096 678

COUNTY OF EL PASO, TEXAS
STATEMENT OF GENERAL BONDED AND MORTGAGE DEBT AND INTEREST
DECEMBER 31, 1968

AMOUNT AVAILABLE AND TO BE PROVIDED
FOR PAYMENT OF GENERAL BONDS, MORTGAGES AND INTEREST

AMOUNT AVAILABLE IN INTEREST AND REDEMPTION FUNDS	318 842
TO BE PROVIDED IN FUTURE YEARS FOR PAYMENT OF GENERAL BONDS, MORTGAGES AND INTEREST	4 967 836
	<hr/>
TOTAL AVAILABLE AND TO BE PROVIDED	<u>5 286 678</u>

GENERAL BONDS, MORTGAGES AND INTEREST PAYABLE IN FUTURE YEARS:

BONDS PAYABLE	4 170 000
MORTGAGE PAYABLE	20 000
INTEREST PAYABLE IN FUTURE YEARS	1 096 678
	<hr/>
TOTAL BONDS, MORTGAGES AND INTEREST PAYABLE	<u>5 286 678</u>

COUNTY OF EL PASO, TEXAS
SCHEDULE OF DEBT SERVICE CHARGES
ON BONDED INDEBTEDNESS UNTIL MATURITY
AS OF DECEMBER 31, 1968

<u>YEARS OF MATURITY</u>	<u>PRINCIPAL</u>	<u>INTEREST</u>	<u>TOTAL</u>
1969	290 000	142 022	432 022
1970	298 000	133 039	431 039
1971	273 000	123 370	396 370
1972	275 000	113 809	388 809
1973	303 000	104 100	407 100
1974	311 000	93 611	404 611
1975	350 000	82 695	432 695
1976	357 000	70 935	427 935
1977	278 000	60 215	338 215
1978	284 000	50 437	334 437
1979	295 000	40 295	335 295
1980	261 000	29 745	290 745
1981	247 000	20 565	267 565
1982	63 000	11 780	74 780
1983	94 000	9 830	103 830
1984	105 000	6 810	111 810
1985	<u>106 000</u>	<u>3 420</u>	<u>109 420</u>
 TOTAL	 <u>4 190 000</u>	 <u>1 096 678</u>	 <u>5 286 678</u>

COUNTY OF EL PASO, TEXAS
TAX LEVIES AND TAX COLLECTIONS
FOR THE LAST TEN YEARS
DECEMBER 31, 1968

<u>YEAR</u>	<u>TOTAL TAXES LEVIED</u>	<u>DELINQUENT AT JUNE 30 FOLLOWING YEAR</u>	<u>COLLECTION CURRENT YEAR</u>	<u>PERCENTAGE OF LEVY DURING YEAR</u>
1967	2 725 164	75 201	2 649 963	97.2
1966	2 655 117	77 226	2 577 891	97.1
1965	2 578 043	79 507	2 498 536	96.8
1964	2 507 219	86 567	2 420 652	96.6
1963	2 454 699	99 074	2 355 625	95.6
1962	2 338 242	79 634	2 258 608	96.6
1961	1 998 283	73 505	1 924 778	96.3
1960	1 882 477	86 266	1 796 211	95.4
1959	1 725 293	59 109	1 666 184	96.6
1958	<u>1 803 123</u>	<u>45 468</u>	<u>1 757 655</u>	<u>97.4</u>
TOTAL	<u><u>22 667 660</u></u>	<u><u>761 557</u></u>	<u><u>21 906 103</u></u>	<u><u>96.6</u></u>

COUNTY OF EL PASO, TEXAS
TAX RATES AND FUND ALLOCATION
FOR THE LAST TEN YEARS

<u>YEAR</u>	<u>TOTAL TAX RATE</u>	<u>GENERAL FUND</u>	<u>ROAD & BRIDGE FUND</u>	<u>JURY FUND</u>	<u>PUB. BLDG. & IMPRVMT. FUND</u>	<u>SINKING FUND</u>
1968	.95000	.71762	.06033	.01767		.15438
1967	.95000	.72200	.03211	.01718	.00769	.17102
1966	.95000	.70652	.06351	.01609		.16388
1965	.95000	.69027	.06925	.01710		.17338
1964	.95000	.70000	.07300	.01700		.16000
1963	.95000	.65000	.0600	.01800	.03900	.18300
1962	.95000	.61750	.11400	.01900		.19950
1961	.85000	.56600	.05550	.00850	.04500	.17500
1960	.85000	.40800	.06100	.05100	.14300	.18700
1959	.85000	.37900	.06700	.06100	.20600	.13700

EL PASO COUNTY

MISCELLANEOUS STATISTICAL FACTS

<u>DATE OF INCORPORATION</u>	1871		
<u>FORM OF GOVERNMENT</u>	A PUBLIC CORPORATION AND POLITICAL SUBDIVISION OF THE STATE OF TEXAS		
<u>AREA (SQUARE MILES)</u>	1054		
<u>ALTITUDE</u>	3500 - 7100 FEET		
<u>CLIMATE</u>	<u>MAX.</u>	<u>MIN.</u>	<u>AVERAGE</u>
TEMPERATURE (°F) NORMAL MEAN	77.2	49.4	63.3
1968 MEAN	75.5	48.9	62.2
RAINFALL NORMAL MEAN ANNUAL	7.89 INCHES		
1968 TOTAL	12.02 INCHES		
<u>POPULATION GROWTH</u>	YEAR		
	1880	736	
	1950	194,986	
	1960	314,070	
	1967 (EST)	377,000	
	1968 (EST)	394,000	
<u>REGISTERED VOTERS (GENERAL ELECTION)</u>		<u>1964</u>	<u>1968</u>
		62,671	88,913
<u>VOTES CAST</u>		57,602	68,796
<u>AUTOMOBILE REGISTRATIONS</u>	(1966-1967 FISCAL YEAR)		132,765
	(1967-1968 " "		138,202
<u>NUMBER COUNTY EMPLOYEES</u>	DECEMBER 31, 1967		407
<u>RETAIL SALES</u>	1967	\$	456,000,000
	1968		492,480,000
<u>BANK DEPOSITS</u>	1967		434,230,365
	1968		464,665,959
<u>RADIO STATIONS</u>			8
<u>TELEVISION STATIONS</u>			3
<u>NEWSPAPERS</u>			2
<u>CHURCHES</u>			233 (EST.)