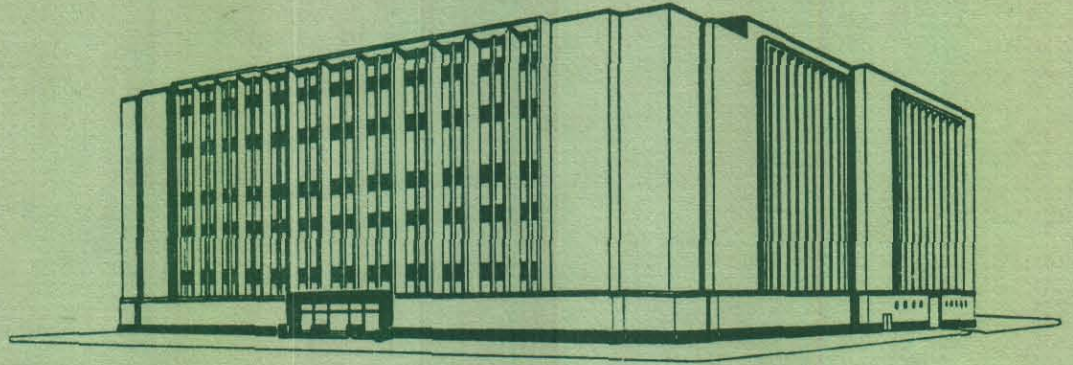


**T
E
X
A
S

1
9
6
9**



COUNTY of EL PASO

**ANNUAL
REPORT**

FOR YEAR ENDED DECEMBER 31,

1969

WILLIS H. SAMPLE

**COUNTY AUDITOR
EL PASO, TEXAS**

COUNTY OF EL PASO, TEXAS

TABLE OF CONTENTS

	<u>PAGE</u>
<u>LETTER OF TRANSMITTAL</u>	I
 <u>FINANCIAL STATEMENTS:</u>	
<u>COMBINED STATEMENTS</u>	
A-1 COMBINED BALANCE SHEET - ALL FUNDS.....	1 - 4
A-2 COMPARATIVE BALANCE SHEETS FOR YEARS ENDING DECEMBER 31, 1967, 1968 AND 1969.....	5 - 6
A-3 STATEMENT OF CHANGES IN TAXES RECEIVABLE.....	7
A-4 SUMMARY STATEMENT OF CASH RECEIPTS AND DISBURSEMENTS ALL FUNDS...	8
A-5 STATEMENT OF INVESTMENTS.....	9
 <u>GENERAL FUND</u>	
B-1 BALANCE SHEET.....	10
B-2 ANALYSIS OF CHANGES IN FUND BALANCE.....	11
B-3 SUMMARY STATEMENT OF REVENUE - ESTIMATED AND ACTUAL	12
B-4 SUMMARY STATEMENT OF EXPENDITURES-COMPARED WITH APPROPRIATIONS...	13 - 14
B-5 STATEMENT OF REVENUE - ESTIMATED AND ACTUAL.....	15
B-6 STATEMENT OF EXPENDITURES COMPARED WITH AUTHORIZATIONS.....	16 - 21
 <u>ROAD & BRIDGE FUND</u>	
C-1 BALANCE SHEET.....	22
C-2 ANALYSIS OF CHANGES IN FUND BALANCE.....	23
C-3 STATEMENT OF REVENUE - ESTIMATED AND ACTUAL AND STATEMENT OF EXPENDITURES COMPARED WITH AUTHORIZATIONS.....	24
 <u>JURY FUND</u>	
D-1 BALANCE SHEET.....	25
D-2 ANALYSIS OF CHANGES IN FUND BALANCE.....	26
D-3 STATEMENT OF REVENUE - ESTIMATED AND ACTUAL AND STATEMENT OF EXPENDITURES COMPARED WITH AUTHORIZATIONS.....	27

COUNTY OF EL PASO, TEXAS

TABLE OF CONTENTS

	<u>PAGE</u>
<u>FINANCIAL STATEMENTS:</u>	
<u>PUBLIC BUILDING & IMPROVEMENT FUND</u>	
E-1	BALANCE SHEET..... 28
E-2	ANALYSIS OF CHANGES IN FUND BALANCE..... 29
E-3	STATEMENT OF REVENUE - ESTIMATED AND ACTUAL..... 30
<u>INTEREST & SINKING FUNDS</u>	
F-1	BALANCE SHEET..... 31
F-2	ANALYSIS OF CHANGES IN FUND BALANCE..... 32
F-3	STATEMENT OF REVENUES - ESTIMATED AND ACTUAL..... 33
<u>TRUST AND AGENCY FUNDS</u>	
G-1	BALANCE SHEET..... 34
G-2	STATEMENT OF CASH RECEIPTS AND DISBURSEMENTS..... 35 - 36
<u>GENERAL FIXED ASSETS</u>	
H-1	COMPARATIVE STATEMENT OF FIXED ASSETS..... 37
H-2	DETAILED STATEMENT OF GENERAL FIXED ASSETS..... 38
<u>GENERAL BONDED AND MORTGAGE DEBT AND INTEREST</u>	
I-1	ANALYSIS OF CHANGES IN BONDED DEBT OCCURRING DURING YEAR 1969. 39 - 40
I-2	STATEMENT OF BOND AND MORTGAGE PRINCIPAL AND INTEREST DETAILED BY ISSUES..... 41
I-3	STATEMENT OF GENERAL BONDED AND MORTGAGE DEBT AND INTEREST.... 42
I-4	GENERAL BOND AND MORTGAGE DEBT SERVICE REQUIREMENTS UNTIL MATURITY..... 43
<u>STATISTICAL TABLES</u>	
J-1	TAX LEVIES AND TAX COLLECTIONS FOR THE LAST TEN YEARS..... 44
J-2	TAX RATES AND FUND ALLOCATION FOR THE LAST TEN YEARS..... 45
J-3	MISCELLANEOUS STATISTICAL FACTS..... 46

MARCH 27, 1970

HONORABLE DISTRICT JUDGES:

H. E. BROCKMOLLER, JUDGE, 120TH. DISTRICT COURT
J. WOODARD, JUDGE, 34TH. DISTRICT COURT
C. R. SCHULTE, JUDGE, 41ST. DISTRICT COURT
J. N. FANT, JUDGE, 65TH. DISTRICT COURT
G. RODRIGUEZ, SR., JUDGE, 168TH. DISTRICT COURT
E. F. BERLINER, JUDGE 171ST. DISTRICT COURT

HONORABLE COUNTY COMMISSIONERS' COURT:

COLBERT COLDWELL, COUNTY JUDGE
C. C. ANDERSON, PRECINCT 1
R. R. TELLES, PRECINCT 2
R. SANCHEZ, PRECINCT 3
S. BLACKHAM, PRECINCT 4

GENTLEMEN:

IN COMPLIANCE WITH ARTICLE 1665, REVISED TEXAS CIVIL STATUTES AS AMENDED, I HEREWITH PRESENT FOR YOUR INFORMATION AND GUIDANCE MY REPORT OF THE FINANCIAL CONDITION OF EL PASO COUNTY ON DECEMBER 31, 1969, AND THE RESULTS OF OPERATIONS FOR THE YEAR THEN ENDED.

THE VARIOUS SCHEDULES IN THIS REPORT ARE FROM ACCOUNTS MAINTAINED IN THE OFFICE OF THE COUNTY AUDITOR. THE ACCOUNTS FOR THIS COUNTY ARE CONSIDERED AS BEING MAINTAINED ON A MODIFIED ACCRUAL BASIS. IT IS A BASIS THAT MAY BE MORE APTLY EXPLAINED AS FOLLOWS:

- A. APPROPRIATIONS ARE ENCUMBERED FOR REQUISITIONS, SALARIES AND CONTRACTS PENDING ACTUAL CASH EXPENDITURES.
- B. ESTIMATED RECEIVABLES TO BE COLLECTED DURING THE FISCAL YEAR ARE AVAILABLE FOR APPROPRIATION.
- C. DEPRECIATION IS NOT COMPUTED ON PROPERTY AND EQUIPMENT OWNED BY THE COUNTY.
- D. IMPORTANT REVENUES AND EXPENSES ARE ACCRUED AT THE END OF EACH FISCAL YEAR.

INDIVIDUAL ACCOUNT RECORDS ARE MAINTAINED FOR THE VARIOUS FUNDS IN THE REGISTRY OF THE SEVERAL COURTS-AT-LAW. ALL SUCH FUNDS ARE IN THE CUSTODY OF THE DISTRICT CLERK AND COUNTY CLERK. ON DECEMBER 31, 1969 THE FUNDS OF THE DISTRICT CLERK TOTALED \$420,157.93 AND THOSE OF THE COUNTY CLERK \$144,744.44. THESE FUNDS ARE SUBJECT TO THE ORDER OF THE VARIOUS COURTS, THEREFORE THEY ARE NOT INCLUDED IN THE COUNTY STATEMENTS MAKING UP THIS REPORT.

COUNTY RECORDS OF FIXED ASSETS REFLECT THAT THEY WERE FIRST FORMALIZED WITH THE YEAR ENDING DECEMBER 31, 1958. ALL ITEMS UNDER THE HEADING "EQUIPMENT AND FURNISHINGS" ARE KEPT IN DETAIL AND AN ANNUAL INVENTORY TAKEN WITH THE GENERAL BOOKS OF THE COUNTY, ADJUSTED ANNUALLY FOR THE CHANGES THEREIN. ALSO ALL OTHER CLASSES OF FIXED ASSETS ARE ADJUSTED ANNUALLY.

YOUR ATTENTION IS DIRECTED TO THE FACT THAT ALL FUNDS, SECURITIES AND VARIOUS RESERVE ACCOUNTS OF THE EMPLOYEES' RETIREMENT SYSTEM ARE INCLUDED IN THIS REPORT. THE CASH AND INVESTMENTS MADE FOR THIS FUND ARE UNDER THE DIRECT CUSTODY OF THE COUNTY TREASURER AS PER RULING OF THE COUNTY ATTORNEY.

COMMENTS ON "COURTHOUSE HAPPENNINGS" AND FINANCIAL HIGHLIGHTS
FOR THE YEAR 1969

1. THE ANNUAL COUNTY OPERATING BUDGET WAS ADOPTED BY COMMISSIONERS' COURT ON JANUARY 13, 1969. DURING THE YEAR, THREE EMERGENCIES WERE DECLARED BY COMMISSIONERS' COURT THAT REQUIRED OPERATING BUDGET AMENDMENTS. THEY WERE AS FOLLOWS:

<u>DATE</u>	<u>REVENUES</u>	<u>APPROPRIATIONS</u>
JULY 7, 1969 INCREASED	\$ 92,250.00	\$ 92,250.00
SEPT. 15, 1969 "	38,410.00	38,410.00
OCT. 20, 1969 "	9,000.00	9,000.00

AFTER THE AMENDING ORDERS, THE TOTAL AMOUNT OF THE 1969 BUDGET WAS \$4,455,351.00.

2. ASSETS OF EMPLOYEES' RETIREMENT SYSTEM INCREASED \$103,882 FOR THE YEAR TO A TOTAL OF \$1,344,820. INTEREST EARNED ON INVESTMENTS OF THE SYSTEM FOR 1969 WAS \$59,450 - AN INCREASE OF \$5,726 OVER EARNINGS IN THE YEAR 1968. INTEREST WAS CREDITED TO THE PARTICIPANTS IN THE SYSTEM AT THE RATE OF $3\frac{1}{2}\%$ WHICH IS THE MAXIMUM ALLOWED BY THE BY-LAWS OF THE RETIREMENT SYSTEM.
3. THE AUDITOR'S OFFICE PURSUED THE POLICY OF RECOMMENDING TO THE COUNTY TREASURER AND COMMISSIONERS' COURT THAT IDLE COUNTY FUNDS BE INVESTED IN CERTIFICATES OF DEPOSIT OF LOCAL BANKS OR GOVERNMENT SECURITIES. THE COUNTY'S INTEREST EARNINGS IN 1969 - \$55,847.

4. THE TOTAL EL PASO COUNTY BOND PRINCIPAL INDEBTEDNESS AS OF DECEMBER 31, 1969 WAS \$3,900,000 AND THE INTEREST TO BE PAID ON THIS INDEBTEDNESS TO MATURITY WAS \$954,646. BASED ON THE ESTIMATED COUNTY POPULATION OF 400,040 AS OF DECEMBER 31, 1969, THE PRINCIPAL BONDED INDEBTEDNESS OF THE COUNTY IS \$9.75 PER CAPITA.
5. THE J. HAROLD TILLMAN HEALTH CENTER AND THE OUTLYING CLINICS, INCLUDING LAND, WERE COMPLETED AT A TOTAL COST TO THE COUNTY OF \$404,552. THE COUNTY AND CITY EACH HAVE AN UNDIVIDED ONE-HALF INTEREST IN THE PROPERTIES PER A CONTRACT SIGNED IN NOVEMBER 1969 AND FILED WITH THE COUNTY CLERK.
6. COUNTY AD VALOREM TAX ROLL INCREASED FROM \$297,275,572 FOR YEAR 1968 TO \$313,578,226 FOR THE YEAR 1969. THERE WAS NO INCREASE IN THE TAX RATE WHICH REMAINED AT 95¢ FOR EACH \$100 OF ASSESSED VALUE. COLLECTION FOR THE 1968 CURRENT TAX ROLL AMOUNTED TO 97.2% OF THE TOTAL TAX LEVIES.
7. COMMISSIONERS' COURT ENTERED INTO A CONTRACT ON MAY 23, 1969 WITH JOHN R. LAVIS, GENERAL CONTRACTOR, INC. IN THE SUM OF \$117,088 TO CONSTRUCT THE 41ST. DISTRICT COURTROOM ON THE 6TH. FLOOR OF THE COURTHOUSE. SUBSEQUENTLY, CHANGE ORDERS IN THE SUM OF \$58,041 WERE GIVEN THIS FIRM TO ALSO CONSTRUCT THE 168TH. DISTRICT COURTROOM. A CONTRACT WAS SIGNED ON MAY 20, 1969 WITH NORTON BROTHERS TO FURNISH FURNITURE AND FIXTURES FOR THE 41ST. DISTRICT COURTROOM. THE ORIGINAL CONTRACT AND CHANGE ORDERS TOTALED \$12,090.92. THE 41ST. DISTRICT COURTROOM WAS OFFICIALLY OCCUPIED ON DECEMBER 22, 1969.
8. COUNTY JUDGE COLBERT COLDWELL ON AUGUST 7, 1969 SOLD AT AUCTION THE FOLLOWING COUNTY-OWNED LAND:

<u>DESCRIPTION</u>	<u>AMOUNT</u>
WESTERN ($\frac{1}{2}$) OF SECTION 30, BLK. 77. TSP 4, EL PASO COUNTY - 320 ACRES	\$ 4,522.00
SECTION 5, BLK. 77, TSP 5, EL PASO COUNTY - 640 ACRES	26,880.00
SECTION 31, BLK. 77, TSP 4, EL PASO COUNTY - 640 ACRES	13,440.00
SECTION 40, BLK. 78, TSP 4, EL PASO COUNTY - 634.98 ACRES (MONEY STILL IN ESCROW WITH EL PASO TITLE CO. DUE TO FAULTY TITLE.)	26,034.18

HE ALSO SOLD AT AUCTION ON DECEMBER 11, 1969 THE FOLLOWING COUNTY-OWNED LAND:

EASTERN ($\frac{1}{2}$) SECTION 41, BLK. 77, TSP 4, EL PASO COUNTY 320 ACRES	\$ 10,240.00
SOUTHWEST ($\frac{1}{4}$) OF SECTION 41, BLK. 77, TSP 4, EL PASO COUNTY 160 ACRES	8,320.00
NORTHERN ($\frac{1}{2}$) OF THE NORTHWEST ($\frac{1}{4}$) OF SECTION 41, BLK. 77, TSP 4, EL PASO COUNTY - 80 ACRES	4,400.00
SOUTHERN ($\frac{1}{2}$) OF THE NORTHWEST ($\frac{1}{4}$) OF SECTION 41, BLK. 77, TSP 4, EL PASO COUNTY - 80 ACRES	5,200.00
TRACT 11C, BLK. 2, SOCORRO GRANT - .219 ACRES	575.00
TRACT 6C, BLK. 45, SAN ELIZARIO GRANT, EL PASO COUNTY, .34 ACRES	550.00
LOTS 27 AND 28, BLK. 12 DAVIS ADDITION, FABENS EL PASO COUNTY	460.00
LOTS 37, 38 AND 39, BLK. 6, TORNILLO TOWNSITE EL PASO COUNTY	325.00
LOTS 40, 41, BLK. 6 TORNILLO TOWNSITE EL PASO COUNTY	<u>285.00</u>
TOTAL LAND SALES	<u>\$ 101,231.18</u>

THESE FUNDS, LESS CERTAIN PAYMENTS TO OTHER GOVERNMENTAL UNITS, WERE APPROPRIATED FOR THE CONSTRUCTION OF THE 41ST. AND 168TH. DISTRICT COURTROOMS ON THE SIXTH FLOOR OF THE COURTHOUSE.

THE LAND JOINTLY OWNED WITH THE CITY, LOCATED IN THE ALEXANDER ADDITION TO CITY OF EL PASO IS STILL BEING HELD, BUT ITS USE HAS NOT BEEN DETERMINED.

9. NEW COURTS FOR EL PASO COUNTY HAVE BEEN A PRESSING NEED FOR THE PAST FIVE OR MORE YEARS. TO ALLEVIATE THIS CONDITION TO AN EXTENT, THE 1969 TEXAS STATE LEGISLATURE AUTHORIZED ONE NEW DISTRICT COURT AND ONE NEW COUNTY COURT-AT-LAW FOR EL PASO COUNTY. OPERATION OF COUNTY COURT-AT-LAW #3 BEGAN ON SEPTEMBER 1, 1969 AND THE 168TH. DISTRICT COURT ON NOVEMBER 1, 1969. PRIOR TO YEAR 1935, THE STATE OF TEXAS PAID ALL THE COST IN PROSECUTING FELONY CASES, WHICH COSTS ARE NOW FINANCED ENTIRELY BY COUNTIES EXCEPT FOR SMALL SUBSIDIES IN THE FORM OF A STATE PER CAPITA TAX AND THE STATE PROPORTION OF SALARIES OF THE DISTRICT ATTORNEY. IF IT IS A COUNTY FUNCTION, THE STATE SHOULD GRANT COUNTIES ADDITIONAL SOURCES OF INCOME WITH WHICH TO DO THE WORK.

10. NO FUNDS WERE APPROPRIATED IN THE 1969 BUDGET FOR AN ANNUAL AUDIT BY AN INDEPENDENT CERTIFIED PUBLIC ACCOUNTANT DUE TO THE SHORTAGE OF REVENUE. THIS CONDITION MUST BE REMEDIED IN SUBSEQUENT YEARS AS THE TAXPAYERS CAN DEPEND ON THIS AS A MEASURE OF PROTECTION.
11. ALL COUNTY OPERATING FUNDS FROM A CASH VIEWPOINT WERE IN A GOOD CONDITION AT THE END OF THE YEAR, EVEN THOUGH \$1,200,000 HAD BEEN INVESTED IN SHORT TERM SECURITIES. CASH BALANCES AT THE END OF 1969 AS COMPARED WITH 1968 WERE:

	<u>1969</u>	<u>1968</u>
GENERAL FUND	636,549	465,893
ROAD & BRIDGE FUND	52,079	44,499
PUBLIC BUILDING & IMPROVEMENT FUND	73,172	41,136
JURY FUND	25,084	24,597
INTEREST & SINKING FUND	<u>81,364</u>	<u>118,842</u>
TOTAL	<u>868,248</u>	<u>694,967</u>

RECOMMENDATIONS FOR FURTHERING COUNTY PROGRESS

COMMISSIONERS' COURT, SITTING AS A BOARD OF EQUALIZATION, RAISED THE COUNTY ASSESSED VALUATION FROM 20% TO 25% EFFECTIVE JANUARY 1, 1970. BASED ON 1969 TAX ROLLS, THIS SHOULD RESULT IN APPROXIMATELY \$410,000 OF ADDITIONAL REVENUE FOR THE COUNTY. THIS REVENUE WILL CERTAINLY AID OUR STRAINED FISCAL CONDITION, BUT IT IS ONLY A TEMPORARY MEASURE WITH INFLATION CONSTANTLY ERODING THE REVENUE DOLLAR.

COUNTIES SHOULD NOT EXPECT THE TAXPAYER, THROUGH AD VALOREM TAXES, TO SUPPORT THE WHOLE TAX STRUCTURE. OTHER BROAD BASED SOURCES OF REVENUE SHOULD BE DEVELOPED SUCH AS THE FOLLOWING:

1. ONE OF THE CURRENT STATE LEGISLATIVE ISSUES IS THE PASSAGE OF A LAW PERMITTING THE CONSUMPTION OF LIQUOR BY THE DRINK IN COUNTIES VOTING FOR IT. BEFORE THIS LAW IS ENACTED, OUR LOCAL LEGISLATORS SHOULD DETERMINE THAT A PROVISION BE INCLUDED PERMITTING SUCH COUNTIES TO SHARE IN THE REVENUE FROM SUCH A TAX. I FIRMLY BELIEVE THIS SHOULD BE ONE OF THE MAJOR OBJECTIVES OF THE TEXAS ASSOCIATION OF COUNTIES AT THIS TIME. OUR COMMISSIONERS, AS WELL AS CONCERNED CITIZENS, SHOULD ADVISE OUR LEGISLATIVE DELEGATION ABOUT THEIR INTEREST IN SUCH REVENUE SHARING WITH THE COUNTIES.

2. DO NOT CHANGE THE MOTOR VEHICLE SALES TAX FROM 3%, BUT RAISE THE COMMISSION RETAINED BY COUNTIES FROM 3 $\frac{1}{2}$ % TO 12%.
3. LEGISLATIVE AUTHORITY SHOULD BE GRANTED TO PERMIT COUNTIES TO LEVY AT LOCAL OPTION A COUNTY-WIDE SALES TAX OF $\frac{1}{4}$ CENT OR $\frac{1}{4}$ %.
4. LEGISLATIVE AUTHORITY TO PERMIT COUNTIES TO REQUIRE THAT COUNTY REVENUE STAMPS BE PLACED ON ALL REAL ESTATE DEEDS BEFORE RECORDING BY THE COUNTY CLERK.
5. LEGISLATIVE AUTHORITY PERMITTING COUNTIES TO SHARE IN THE AUTO REGISTRATION FEES TO A GREATER EXTENT THAN THE MAXIMUM \$175,000 NOW ALLOWED.

COUNTY GOVERNMENT IS THE LOCAL REPRESENTATIVE OF THE STATE. IT HAS BEEN DESIGNATED BY THE STATE TO PERFORM CERTAIN LOCAL DUTIES. ADDITIONAL REVENUE MUST BE PROVIDED BY STATE AUTHORITY, IF THE COUNTY IS TO PERFORM ITS ASSIGNED DUTIES AT THE LOCAL COUNTY LEVEL.

TWO OF THE FASTEST INCREASING SEGMENTS OF LOCAL GOVERNMENT COSTS TODAY ARE THOSE OF LAW ENFORCEMENT AND COURTS, AS WELL AS THE BURGEONING WELFARE DEMANDS. WE CONSTANTLY ADD NEW COURTS, BUT THE CASE LOAD CONTINUES TO MOUNT. EVEN IN SPITE OF GREATLY EXPANDED LAW ENFORCEMENT AGENCIES, OUR CRIME RATE CONTINUES TO MUSHROOM. OUR COUNTY WELFARE DEMANDS, DUE PARTLY TO OUR GEOGRAPHICAL LOCATION, SEEM LIMITLESS. THE FEDERAL AND STATE GOVERNMENTS EXPEND VAST AMOUNTS ON VARIOUS WELFARE PROGRAMS IN OUR COMMUNITY YET THE DEMANDS FOR ADDITIONAL COUNTY AID GROWS DAILY. CAN THE COUNTY AD VALOREM TAXPAYER BE EXPECTED TO SHOULDER ALL OF THIS BURDEN IN FUTURE YEARS? NEW AND BROAD BASED SOURCES OF REVENUE MUST BE FOUND IF EL PASO COUNTY IS TO PROGRESS AS IT SHOULD.

TO THE BEST OF MY KNOWLEDGE AND BELIEF THIS REPORT OF THE OPERATION OF EL PASO COUNTY FOR THE YEAR ENDED DECEMBER 31, 1969 FAIRLY REPRESENTS ITS FINANCIAL CONDITION.

RESPECTFULLY SUBMITTED,


W. H. SAMPLE,
COUNTY AUDITOR

COUNTY OF EL PASO, TEXAS

OFFICIAL DIRECTORY

FOR THE YEAR ENDED DECEMBER 31, 1969

DISTRICT COURTS

JUDGE, 34TH. JUDICIAL DISTRICT
JUDGE, 41ST. JUDICIAL DISTRICT
JUDGE, 65TH. JUDICIAL DISTRICT
JUDGE, 120TH. JUDICIAL DISTRICT
JUDGE, 168TH. JUDICIAL DISTRICT
JUDGE, 171ST. JUDICIAL DISTRICT

INCUMBENT

HON. JERRY WOODARD
HON. CHAS. R. SCHULTE
HON. JACK N. FANT
HON. HANS E. BROCKMOLLER
HON. GEORGE RODRIGUEZ, SR.
HON. EDWIN F. BERLINER

COMMISSIONERS' COURT

JUDGE OF EL PASO COUNTY
COMMISSIONER, PRECINCT 1
COMMISSIONER, PRECINCT 2
COMMISSIONER, PRECINCT 3
COMMISSIONER, PRECINCT 4

HON. COLBERT COLDWELL
HON. CLYDE C. ANDERSON
HON. RICHARD R. TELLES
HON. ROGELIO SANCHEZ
HON. SAM BLACKHAM

OTHER COURTS:

JUDGE, COUNTY COURT AT LAW #1
JUDGE, COUNTY COURT AT LAW #2
JUDGE, COUNTY COURT AT LAW #3

HON. ROBERT J. GALVAN
HON. RICHARD E. CRAWFORD
HON. WELDON S. COPELAND

OTHER OFFICERS

COUNTY TAX ASSESSOR AND COLLECTOR
COUNTY AUDITOR
COUNTY ATTORNEY
COUNTY CLERK
DISTRICT ATTORNEY
DISTRICT CLERK
SHERIFF

CHARLES R. TERRAZAS
W. H. SAMPLE
ENRIQUE H. PENA
J. W. FIELDS
JAMIE BOYD
J. W. A. JOHNSON
MICHAEL J. SULLIVAN, JR.

OFFICIAL DIRECTORY

DECEMBER 31, 1969

COUNTY TREASURER	HAL E. DEAN, SR.
COUNTY PURCHASING AGENT	O. E. BARTHOLOMAE
CONSTABLE, PRECINCT 1	CHARLES W. FOSTER
DEPUTY CONSTABLE, PRECINCT 1	VERNON BAILEY
CONSTABLE, PRECINCT 2	VICTOR BELTRAN
CONSTABLE, PRECINCT 3	AURELIO LARA
CONSTABLE, PRECINCT 4	J. M. MONTES
DEPUTY CONSTABLE, PRECINCT 4	ANTONIO TRUJILLO
CONSTABLE, PRECINCT 5	JESUS CANO
DEPUTY CONSTABLE, PRECINCT 5	ALFREDO VASQUEZ
DEPUTY CONSTABLE, PRECINCT 5	B. BACA
CONSTABLE, PRECINCT 6	MARVIN J. NICCHIO
CONSTABLE PRECINCT 7	C. JOHNNY YBARRA
DEPUTY CONSTABLE, PRECINCT 7	C. JOHNNY YBARRA, JR.
DEPUTY CONSTABLE, PRECINCT 7	BERNARDO VERRANAULT
CONSTABLE, PRECINCT 8	B. NUNEZ
COUNTY ROAD ADMINISTRATOR	NORMAN SALOME
DIRECTOR, CITY-COUNTY HEALTH UNIT	DORA DUE LOGUE (ACTING DRCTR.)
COUNTY SURVEYOR	L. C. LANDON
COUNTY AGRICULTURE AGENT	ANGUS DICKSON, JR.
VETERANS COUNTY SERVICE OFFICER	GABRIEL NAVARRETE
CHIEF PROBATION OFFICER	MORRIS RALEY
COUNTY LIBRARIAN	DAPHNE D. WALKER
BUILDING SUPERINTENDENT	BENJAMIN ESCOBAR

OFFICIAL DIRECTORY

DECEMBER 31, 1969

JUSTICE OF THE PEACE, PREC. 1 PL. 1	BRUNSON D. MOORE
JUSTICE OF THE PEACE, PREC. 1 PL 2	DANNY J. SNOOKS
JUSTICE OF THE PEACE, PREC. 2	<i>HECTOR ENRIQUEZ</i>
JUSTICE OF THE PEACE, PREC. 3	R. G. CANDELARIA ✓
JUSTICE OF THE PEACE, PREC. 4	A. H. SANCHEZ
JUSTICE OF THE PEACE, PREC. 5	D. F. WHITE
JUSTICE OF THE PEACE, PREC. 6	GILBERT G. RUEDA
JUSTICE OF THE PEACE, PREC. 7	<i>Robert Meston</i>
JUSTICE OF THE PEACE, PREC. 8	ROGER N. HAVEKOST ✓
DIRECTOR, COUNTY CHILD WELFARE UNIT	BOB C. LEWIS
DIRECTOR, GENERAL ASSISTANCE AGENCY	BEN MEJIA
DIRECTOR, COLISEUM & LIBERTY HALL	HETTIE L. CARLOCK
DIRECTOR, CHILD GUIDANCE UNIT	MANUEL DE LA ROSA
DIRECTOR, CIVIL DEFENSE	BRYCE LAMMERT
DIRECTOR, DATA PROCESSING DPT.	W. TAFT MOORE
GOLF PRO, ASCARATE GOLF COURSE	F. DAUGHERTY
SUPERVISOR, COUNTY PARKS & RECREATION	RAYMOND H. ZITUR
	F. C. ATKINS
	SALVADOR QUINTANA

COUNTY OF EL PASO, TEXAS

COMBINED BALANCE SHEET, ALL FUNDS

DECEMBER 31, 1969

A S S E T S

	<u>TOTAL</u>	<u>GENERAL FUND</u>	<u>ROAD & BRIDGE FUND</u>
CASH IN DEPOSITORY	981 420	636 200	52 079
CHANGE FUND	350	350	
CASH WITH FISCAL AGENTS	16 220		
<u>TAXES RECEIVABLE:</u>			
CURRENT	1 095 278	832 926	70 974
DELINQUENT	150 225	114 242	9 735
TOTAL	1 245 503	947 168	80 709
LESS:			
RESERVE FOR UNCOLLECTIBLE TAXES	254 498	193 538	16 492
NET TAXES RECEIVABLE	991 005	753 630	64 217
INVENTORIES - OFFICE SUPPLIES	302	302	
MISCELLANEOUS RECEIVABLES & FEES	168 442	118 648	48 296
PREPAID INSURANCE	14 166	14 166	
INVESTMENTS	1 200 000	910 000	40 000
SECURITIES - HELD IN TRUST	1 389 218		
FUNDS AVAILABLE AND TO BE PROVIDED FOR RETIREMENT OF BONDS AND INTEREST	4 838 436		
<u>DEFERRED CHARGES:</u>			
COURTHOUSE 6TH. FLOOR PROJECT	138 777		
<u>FIXED ASSETS:</u>			
LAND	1 354 466		
BUILDINGS	7 648 589		
HIGHWAYS	1 429 229		
BRIDGES & CULVERTS	94 300		
FLOOD CONTROL	84 447		
EQUIPMENT INVENTORY	1 435 820		
TOTAL FIXED ASSETS	12 046 851		
 TOTAL ASSETS	 21 785 187	 2 433 296	 204 592

COUNTY OF EL PASO, TEXAS
COMBINED BALANCE SHEET, ALL FUNDS

DECEMBER 31, 1969

A S S E T S

JURY FUND	PUBLIC BUILDING & IMPROVEMENTS FUND	INTEREST AND SINKING FUNDS	INTEREST & BONDED DEBT	TRUST FUNDS	FIXED ASSETS FUND
25 084	73 172	81 364		113 521	
			16 220		
24 863		166 515			
3 410		22 838			
28 273		189 353			
5 777		38 691			
22 496		150 662			
483				1 015	
25 000		225 000		1 389 218	
			4 838 436		
	138 777				
					1 354 466
					7 648 589
					1 429 229
					94 300
					84 447
					1 435 820
					12 046 851
73 063	211 949	457 026	4 854 656	1 503 754	12 046 851

COUNTY OF EL PASO, TEXAS

COMBINED BALANCE SHEET, ALL FUNDS

DECEMBER 31, 1969

LIABILITIES

	TOTAL	GENERAL FUND	ROAD & BRIDGE FUND
WARRANTS PAYABLE	96 197	86 457	9 718
BONDS PAYABLE - SUBSEQUENT 12-31-69	3 900 000		
INTEREST PAYABLE " "	954 656		
 TOTAL LIABILITIES	 4 950 853	 86 457	 9 718

APPROPRIATIONS, RESERVES & FUND BALANCES

APPROPRIATIONS	198 111		
RESERVES:			
1969 ENCUMBRANCES	2 894 684	2 201 321	187 575
CONTINGENCIES	8 557		8 435
PREPAID INSURANCE	14 166	14 166	
CITY OF EL PASO-FINE COLLECTIONS	1 425	1 425	
 TOTAL RESERVES & APPROPRIATIONS	 3 116 943	 2 216 912	 196 010
FUND BALANCES:			
TRUST & AGENCY FUNDS BALANCE	1 503 754		
INVENTORY, PAYROLL & CHANGE FUND	83 652	83 652	
FIXED ASSETS	12 046 851		
UNRESERVED BALANCES (DEFICIT)	83 134	46 275	(1 136)
TOTAL BALANCES	13 717 391	129 927	(1 136)
 TOTAL LIABILITIES, RESERVES & FUND BALANCES	 21 785 187	 2 433 296	 204 592

COUNTY OF EL PASO, TEXAS

COMBINED BALANCE SHEET, ALL FUNDS

DECEMBER 31, 1969

L I A B I L I T I E S

JURY FUND	PUBLIC BUILDING & IMPROVEMENT FUND	INTEREST AND SINKING FUNDS	INTEREST & BONDED DEBT	TRUST FUNDS	FIXED ASSETS FUNDS
22			3 900 000 954 656		
22			4 854 656		
	198 111				
65 709	122	440 079			
65 709	198 233	440 079			
				1 503 754	
					12 046 851
7 332	13 716	16 947			
7 332	13 716	16 947		1 503 754	12 046 851
73 063	211 949	457 026	4 854 656	1 503 754	12 046 851

SCHEDULE A-2

COUNTY OF EL PASO, TEXAS
COMPARATIVE BALANCE SHEETS FOR YEARS ENDING
DECEMBER 31, 1969, 1968, 1967

<u>A S S E T S</u>	<u>1969</u>	<u>1968</u>	<u>1967</u>
CASH IN DEPOSITORY	981 420	793 005	918 875
CHANGE FUND	350	250	250
CASH WITH FISCAL AGENTS	16 220	16 440	16 743
<u>TAXES RECEIVABLE:</u>			
CURRENT	1 095 278	882 073	784 168
DELINQUENT	<u>150 225</u>	<u>122 867</u>	<u>117 624</u>
TOTAL	1 245 503	1 004 940	901 792
LESS:			
RESERVE FOR UNCOLLECTIBLE TAXES	<u>254 498</u>	<u>207 597</u>	<u>199 379</u>
NET TAXES RECEIVABLE	991 005	797 343	702 413
INVENTORIES - OFFICE SUPPLIES	302	476	476
MISCELLANEOUS RECEIVABLES & FEES	168 442	169 080	168 197
PREPAID INSURANCE	14 166	8 103	15 278
INVESTMENTS	1 200 000	1 405 000	1 200 000
SECURITIES - HELD IN TRUST	1 389 218	1 283 879	1 130 583
FUNDS AVAILABLE AND TO BE PROVIDED FOR RETIREMENT OF BONDS, MORTGAGES AND INTEREST	4 838 436	5 270 238	5 726 225
<u>DEFERRED CHARGES:</u>			
COURTROOMS - 41ST. & 168TH. DISTRICTS	138 777	370 387	233 729
<u>FIXED ASSETS - GENERAL</u>			
LAND	1 354 466	1 360 494	1 376 368
BUILDINGS	7 648 589	7 328 699	7 322 122
HIGHWAYS	1 429 229	1 422 183	1 407 524
BRIDGES & CULVERTS	94 300	86 200	86 200
FLOOD CONTROL	84 447	98 937	98 937
EQUIPMENT INVENTORY	<u>1 451 510*</u>	<u>1 368 080</u>	<u>1 308 913</u>
TOTAL FIXED ASSETS	12 062 541	11 664 593	11 600 064
TOTAL ASSETS	<u><u>21 800 877</u></u>	<u><u>21 778 794</u></u>	<u><u>21 712 833</u></u>

* Account Overstated by \$15,690

COUNTY OF EL PASO, TEXAS
COMPARATIVE BALANCE SHEETS FOR YEARS ENDING
DECEMBER 31, 1969, 1968, 1967

<u>LIABILITIES</u>	<u>1969</u>	<u>1968</u>	<u>1967</u>
WARRANTS PAYABLE	96 197	88 799	103 721
MATURED BOND INTEREST PAYABLE			83
BONDS PAYABLE	3 900 000	4 170 000	4 455 000
INTEREST PAYABLE	954 656	1 096 678	1 247 885
MORTGAGE PAYABLE		20 000	40 000
TOTAL LIABILITIES	<u>4 950 853</u>	<u>5 375 477</u>	<u>5 846 689</u>

APPROPRIATIONS, RESERVES, & FUND BALANCES

APPROPRIATIONS	198 111	508 000	385 615
RESERVES:			
ENCUMBRANCES	2 894 684	2 701 023	2 600 210
CONTINGENCIES	8 557	8 435	7 815
PREPAID INSURANCE	14 166	8 103	15 278
CITY OF EL PASO-FINE COLLECTIONS	1 425		
OTHER			8 476
TOTAL RESERVES & APPROPRIATIONS	<u>3 116 943</u>	<u>3 225 561</u>	<u>3 017 394</u>

FUND BALANCES:			
TRUST & AGENCY FUNDS	1 503 754	1 383 095	1 234 022
INVENTORY, PAYROLL & CHANGE FUND	83 652	83 726	83 726
INVESTMENT IN FIXED ASSETS	12 062 541*	11 664 593	11 600 064
UNRESERVED BALANCES (DEFICIT)	83 134	46 342	(69 062)
TOTAL BALANCES	<u>13 733 081</u>	<u>13 177 756</u>	<u>12 848 750</u>

TOTAL LIABILITIES, RESERVES & FUND BALANCES	<u>21 800 877</u>	<u>21 778 794</u>	<u>21 712 833</u>
--	-------------------	-------------------	-------------------

* Account Overstated by \$15,690

COUNTY OF EL PASO, TEXAS
STATEMENT OF CHANGES IN TAXES RECEIVABLE
FOR THE YEAR ENDED DECEMBER 31, 1969

	<u>TOTAL</u>	<u>CURRENT TAXES</u>	<u>DELINQUENT TAXES</u>
TAXES RECEIVABLE, JAN. 1, 1969	1 004 940	882 073	122 867
ADD:			
TAX LEVY FOR 1969	2 979 237	2 979 237	
TRANSFERS FROM CURRENT TAXES	75 950		75 950
PENALTIES AND INTEREST AND SUPPLEMENTALS	14 010	5 635	8 375
TOTAL ADDITIONS	<u>3 069 197</u>	<u>2 984 872</u>	<u>84 325</u>
TOTAL TAXES RECEIVABLE & ADDITIONS	<u>4 074 137</u>	<u>3 866 945</u>	<u>207 192</u>
DEDUCT:			
COLLECTIONS	2 748 420	2 691 453	56 967
TAXES WRITTEN OFF AS UNCOLLECTIBLE	4 264	4 264	
TRANSFERS TO DELINQUENT	75 950	75 950	
TOTAL DEDUCTIONS	<u>2 828 634</u>	<u>2 771 667</u>	<u>56 967</u>
TAXES RECEIVABLE, DEC. 31, 1969	1 245 503	1 095 278	150 225
DEDUCT:			
RESERVE FOR UNCOLLECTIBLE TAXES	<u>254 498</u>	<u>104 273</u>	<u>150 225</u>
NET TAXES RECEIVABLE DEC. 31, 1969	<u>991 005</u>	<u>991 005</u>	

COUNTY OF EL PASO, TEXAS

SUMMARY STATEMENT OF CASH RECEIPTS AND DISBURSEMENTS ALL FUNDS

FOR THE YEAR ENDED DECEMBER 31, 1969

<u>FUND</u>	<u>BALANCE</u>		<u>DISBURSEMENTS</u>	<u>BALANCE</u>
	<u>JANUARY 1 1969</u>	<u>RECEIPTS</u>		<u>DECEMBER 31 1969</u>
GENERAL	465 643	6 211 490	6 040 933	636 200
ROAD & BRIDGE	44 499	647 432	639 852	52 079
JURY	24 597	131 715	131 228	25 084
PERMANENT IMPROVEMENT	41 136	344 014	311 978	73 172
INT & SINKING FUNDS	118 842	1 116 865	1 154 343	81 364
TRUST FUNDS	98 288	411 211	395 978	113 521
TOTAL	793 005	8 862 727	8 674 312	981 420

COUNTY OF EL PASO, TEXASSTATEMENT OF INVESTMENTSDECEMBER 31, 1969

<u>DESCRIPTION</u>	<u>DATE ACQUIRED</u>	<u>INTEREST RATE</u>	<u>MATURITY DATE</u>	<u>BOOK VALUE</u>
CERTIFICATES OF DEPOSIT ISSUED BY 9 MEMBER BANKS OF THE EL PASO CLEARING HOUSE ASSN. - SECURITIES IN TRUST DPT. OF STATE NATIONAL BANK	OCT. 28, 1969	5%	JAN. 26, 1970	600 000
CERTIFICATE OF DEPOSIT ISSUED BY 6 MEMBER BANKS OF THE EL PASO CLEARING HOUSE ASSN. - SECURITIES IN TRUST DPT. OF STATE NATIONAL BANK	DEC. 4, 1969	6%	MAR. 4, 1970	<u>600 000</u>
TOTAL FUNDS				<u><u>1 200 000</u></u>

NOTE: THESE INVESTMENTS WERE MADE FROM COUNTY FUNDS SUPPLIED BY THE VARIOUS
CONSTITUTIONAL FUNDS SHOWN ON THE COMBINED BALANCE SHEET, A 1-2

COUNTY OF EL PASO, TEXAS

GENERAL FUND

BALANCE SHEET

DECEMBER 31, 1969

ASSETS

CASH		636 200
ASCARATE GOLF COURSE CHANGE FUND		350
TAXES RECEIVABLE:		
CURRENT	832 926	
DELINQUENT	114 242	
TOTAL	<u>947 168</u>	
LESS: RESERVE FOR UNCOLLECTIBLE TAXES	<u>193 538</u>	
NET TAXES RECEIVABLE		753 630
MISCELLANEOUS RECEIVABLES & FEES		118 648
INVESTMENTS - SHORT TERM		910 000
INVENTORIES - OFFICE SUPPLIES		302
PREPAID INSURANCE		<u>14 166</u>
TOTAL ASSETS		<u><u>2 433 296</u></u>

LIABILITIES, RESERVES AND SURPLUS

WARRANTS PAYABLE		86 457
RESERVES:		
1969 ENCUMBRANCES	2 201 321	
PREPAID INSURANCE	14 166	
CITY OF EL PASO - FINE COLLECTIONS	<u>1 425</u>	2 216 912
FUND BALANCE:		
INVENTORY, PAYROLL & CHANGE FUND	83 652	
UNRESERVED BALANCE	<u>46 275</u>	<u>129 927</u>
TOTAL LIABILITIES, RESERVES & SURPLUS		<u><u>2 433 296</u></u>

COUNTY OF EL PASO, TEXAS
GENERAL FUND
ANALYSIS OF CHANGES IN FUND BALANCE
FOR YEAR ENDED DECEMBER 31, 1969

FUND BALANCE, 1-1-69		(36 493)
ADD:		
REVENUES:		<u>3 570 509</u>
TOTAL FUND BALANCE & ADDITIONS		3 534 016
DEDUCT:		
EXPENDITURES	3 477 977	
CHANGES IN ALLOCATION OF TAX RATES	<u>9 764</u>	
TOTAL DEDUCTIONS		<u>3 487 741</u>
 FUND BALANCE, 12-31-69		 <u><u>46 275*</u></u>

*NOTE: FUNDS TOTALING \$83,652 HAVE BEEN RECORDED AS APPROPRIATED FROM THE BALANCE OF THIS FUND.

COUNTY OF EL PASO, TEXASGENERAL FUNDSUMMARY STATEMENT OF REVENUE ESTIMATED AND ACTUALFOR THE YEAR ENDED DECEMBER 31, 1969

	<u>ESTIMATED</u>	<u>ACTUAL</u>	<u>ACTUAL OVER OR UNDER* ESTIMATED</u>
<u>TAXES:</u>			
CURRENT	2 028 750	2 005 482	23 268*
DELINQUENT	47 850	39 724	8 126*
TOTAL TAXES	2 076 600	2 045 206	31 394*
<u>BEER & LIQUOR LICENSES</u>	21 000	23 136	2 136
<u>VITAL STATISTICS</u>	46 000	47 291	1 291
<u>FINES & BOND FORFEITURES</u>	197 260	226 306	29 046
<u>FEES OF OFFICE</u>	817 900	836 542	18 642
<u>RENTALS:</u>			
PARKS	3 900	2 680	1 220*
COLISEUM & LIBERTY	49 000	45 390	3 610*
VOTING MACHINES	7 000	7 625	625
TOTAL RENTALS	59 900	55 695	4 205*
<u>OTHER SOURCES:</u>			
DEPARTMENTAL SALES	8 700	16 970	8 270
STATE PER CAPITA TAX	18 000	17 942	58*
UTILITY REIMBURSEMENTS	30 000	28 188	1 812*
OTHER REIMBURSEMENTS	27 000	32 076	5 076
CITY-COUNTY HEALTH U. RECEIPTS	20 000	15 819	4 181*
ASCARATE GOLF COURSE RECEIPTS	110 000	110 365	365
VARIOUS CONCESSION RECEIPTS	36 000	37 795	1 795
MISCELLANEOUS RECEIPTS	13 400	16 512	3 112
MISCELLANEOUS INTEREST	28 700	39 886	11 186
VOTER REGISTRATION	22 000	20 780	1 220*
TOTAL OTHER SOURCES	313 800	336 333	22 533
<u>TOTAL</u>	<u>3 532 460</u>	<u>3 570 509</u>	<u>38 049</u>

COUNTY OF EL PASO, TEXASGENERAL FUNDSUMMARY OF EXPENDITURES COMPARED WITH APPROPRIATIONSFOR THE YEAR ENDED DECEMBER 31, 1969

	<u>APPROPRIATIONS</u>	<u>EXPENDITURES</u>	<u>UNEXPENDED BALANCE-DEFICIT*</u>
<u>ADMINISTRATIVE</u>			
COUNTY JUDGE	23 991	23 699	292
COUNTY CLERK	153 727	150 856	2 871
COUNTY AUDITOR	67 315	66 874	441
COUNTY TREASURER	10 858	10 417	441
TAX ASSESSOR-COLLECTOR	302 817	298 972	3 845
COUNTY PURCHASING AGENT	25 543	25 562	19*
CIVIL DEFENSE	4 800	4 500	300
ELECTIONS	22 204	22 247	43*
EMPLOYEE BENEFITS	187 543	179 526	8 017
RETIREMENT ADMINISTRATION	4 000	3 538	462
ASSESSING CHARGES	31 866	31 866	
MISCELLANEOUS & POSTAGE	25 665	24 964	701
GENERAL TRAVEL	5 670	5 670	
COURTHOUSE	220 864	213 213	7 651
INSURANCE	13 400	13 249	151
REGIONAL PLANNING	8 302	8 301	1
DATA PROCESSING	77 123	77 137	14*
TOTAL ADMINISTRATIVE	<u>1 185 688</u>	<u>1 160 591</u>	<u>25 097</u>
<u>JUDICIAL & LAW ENFORCEMENT</u>			
COUNTY ATTORNEY	79 108	74 727	4 381
SHERIFF & JAIL	592 798	589 499	3 299
DISTRICT ATTORNEY	86 352	84 082	2 270
DISTRICT CLERK	82 707	81 358	1 349
Co. Ct. AT LAW Nos 1,2, & 3	66 755	66 512	243
J. P. COURTS 1-A, 1-B	30 898	30 602	296
J. P. PRECINCTS 2-8	72 375	68 534	3 841
CONSTABLE, PRECINCT #1	15 321	15 242	79
CONSTABLE, PRECINCT #2-#8	15 170	15 018	152
MEDICAL INVESTIGATIONS	16 375	16 375	
JUVENILE BOARD	21 836	21 836	
PROBATION & JUVENILE HOME	144 783	143 985	798
REPORTERS & INTERPRETERS SALARIES	47 939	47 175	764
DISTRICT COURTS EXPENSE	6 720	6 302	418
TOTAL JUD. & LAW ENFORCEMENT	<u>1 279 137</u>	<u>1 261 247</u>	<u>17 890</u>

COUNTY OF EL PASO, TEXASGENERAL FUNDSUMMARY OF EXPENDITURES COMPARED WITH APPROPRIATIONSFOR THE YEAR ENDED DECEMBER 31, 1969

	<u>APPROPRIATIONS</u>	<u>EXPENDITURES</u>	<u>UNEXPENDED BALANCE-DEFICIT*</u>
<u>WELFARE</u>			
GENERAL ASSISTANCE	171 244	169 620	1 624
CHILD WELFARE	145 614	145 614	
CHILD GUIDANCE	30 433	30 433	
PAUPERS	5 600	5 257	343
VETERANS ASSISTANCE	25 867	25 717	150
TOTAL WELFARE	<u>378 758</u>	<u>376 641</u>	<u>2 117</u>
<u>HEALTH & SANITATION</u>			
CITY-COUNTY HEALTH UNIT	278 300	279 243	943*
MENTAL HEALTH	5 700	5 543	157
ANIMAL CONTROL CENTER	24 000	24 000	
TOTAL HEALTH & SANITATION	<u>308 000</u>	<u>308 786</u>	<u>786*</u>
<u>COUNTY PROMOTION & DEVELOPMENT</u>			
INDUSTRIAL BOARD	15 000	15 000	
BOARD OF DEVELOPMENT	3 587	3 587	
COUNTY LIBRARY	28 289	28 157	132
CO-OPERATIVE EXTENSION SVCE.	23 583	23 276	307
TOTAL PROMOTION & DEVELOPMENT	<u>70 459</u>	<u>70 020</u>	<u>439</u>
<u>PARKS & RECREATION</u>			
AREA PARKS EXPENSE:			
ASCARATE, LWR VALLEY, MCKEL.			
CANYON & TOM MAYS PARKS	87 107	86 031	1 076
ASCARATE PARK GOLF COURSE	127 026	126 015	1 011
COLISEUM & LIBERTY HALL	96 285	88 646	7 639
TOTAL PARKS & RECREATION	<u>310 418</u>	<u>300 692</u>	<u>9 726</u>
TOTAL GENERAL FUND	<u>3 532 460</u>	<u>3 477 977</u>	<u>54 483</u>

COUNTY OF EL PASO, TEXASGENERAL FUNDSTATEMENT OF REVENUE - ESTIMATED AND ACTUALFOR THE YEAR ENDED DECEMBER 31, 1969

	<u>ESTIMATED</u> <u>REVENUE</u>	<u>ACTUAL</u> <u>REVENUE</u>	<u>ACTUAL OVER OR</u> <u>UNDER* ESTIMATED</u>
<u>REVENUES:</u>			
AD VALOREM TAXES - CURRENT	2 028 750	2 005 482	23 268*
AD VALOREM TAXES - DELINQUENT	47 850	39 724	8 126*
BEER, WINE & LIQUOR LICENSES	21 000	23 136	2 136
VOTER REGISTRATION	22 000	20 780	1 220*
CITY-COUNTY HEALTH UNIT PRO-RATA	20 000	15 819	4 181*
STATE PER CAPITA TAX	18 000	17 942	58*
STATIONERY STOCK-SALES	4 500	5 863	1 363
JAIL COMMISSARY-SALES	4 200	11 107	6 907
FINES-MISDEMEANORS	197 260	226 306	29 046
<u>RENTALS:</u>			
ASCARATE PARK PAVILION	600	600	
COLISEUM	36 000	34 361	1 639*
COLISEUM PARKING		2 545	2 545
LIBERTY HALL	13 000	8 484	4 516*
MCKELLIGON CANYON	3 300	2 080	1 220*
VOTING MACHINES	7 000	7 625	625
ASCARATE GOLF COURSE	110 000	110 365	365
ASCARATE PARK CONCESSIONS	8 000	7 383	617*
WESTERN PLAYLAND	4 000	1 265	2 735*
COLISEUM CONCESSIONS	24 000	29 147	5 147
UTILITY REIMBURSEMENTS	30 000	28 188	1 812*
OTHER REIMBURSEMENTS	27 000	32 076	5 076
INTEREST FROM INVESTMENTS	28 700	39 886	11 186
MISCELLANEOUS	13 400	16 512	3 112
<u>FEES OF OFFICE:</u>			
ASSESSOR & COLLECTOR	429 000	404 964	24 036*
COUNTY ATTORNEY	10 000	11 920	1 920
COUNTY CLERK	220 000	235 181	15 181
COUNTY COURTS AT LAW	6 200	7 973	1 773
COUNTY JUDGE	7 000	5 091	1 909*
COUNTY SHERIFF	122 500	140 671	18 171
CONSTABLES	1 800	1 741	59*
DISTRICT CLERK	65 000	74 320	9 320
JUSTICES OF THE PEACE	2 400	1 972	428*
TOTAL REVENUE	3 532 460	3 570 509	38 049

COUNTY OF EL PASO, TEXASGENERAL FUNDSTATEMENT OF EXPENDITURES COMPARED WITH AUTHORIZATIONSFOR THE YEAR ENDED DECEMBER 31, 1969

<u>EXPENSES:</u>	<u>APPROPRIATIONS</u>	<u>EXPENDITURES</u>	<u>UNEXPENDED BALANCE-DEFICIT*</u>
<u>COUNTY JUDGE:</u>			
SALARIES	20 691	20 691	
OFFICE EXPENSE	3 300	3 008	292
	<u>23 991</u>	<u>23 699</u>	<u>292</u>
<u>COUNTY JUDGES AT LAW NOS 1,2 & 3:</u>			
SALARIES	64 225	64 210	15
OFFICE EXPENSE	2 530	2 302	228
	<u>66 755</u>	<u>66 512</u>	<u>243</u>
<u>COUNTY ASSESSOR & COLLECTOR:</u>			
SALARIES	234 317	233 948	369
OFFICE EXPENSE	40 500	40 286	214
NEW EQUIPMENT	8 000	5 631	2 369
EXTRA HELP	20 000	19 107	893
	<u>302 817</u>	<u>298 972</u>	<u>3 845</u>
<u>COUNTY ATTORNEY:</u>			
SALARIES	73 908	69 934	3 974
OFFICE EXPENSE	4 500	4 123	377
DELINQUENT TAX COLL. EXP.	700	670	30
	<u>79 108</u>	<u>74 727</u>	<u>4 381</u>
<u>COUNTY AUDITOR:</u>			
SALARIES	64 265	64 172	93
OFFICE EXPENSE	3 050	2 702	348
	<u>67 315</u>	<u>66 874</u>	<u>441</u>
<u>COUNTY PURCHASING AGENT:</u>			
SALARIES	20 983	20 982	1
OFFICE EXPENSE	700	700	
STATIONERY STOCK	3 860	3 880	20*
	<u>25 543</u>	<u>25 562</u>	<u>19*</u>
<u>COUNTY SHERIFF:</u>			
SALARIES-DEPUTIES	354 939	354 586	353
SALARIES-JAILERS	131 744	131 589	155
POSTAGE & STATIONERY	1 401	1 168	233
AUTOMOBILE REPAIRS	7 000	6 846	154
TELEPHONE & TELEGRAPH	6 630	6 532	98
GAS & OIL	12 559	12 731	172*
TRAVEL	2 959	2 424	535
MISCELLANEOUS	10 687	10 440	247
JAIL SUBSISTENCE	41 970	41 596	374
JURY SUPPLIES	395	295	100
MEDICINE & SUPPLIES	12 050	10 959	1 091
OTHER EQUIPMENT	1 000	927	73
AUTOMOBILES-NEW	9 464	9 406	58
	<u>592 798</u>	<u>589 499</u>	<u>3 299</u>

COUNTY OF EL PASO, TEXAS

GENERAL FUND

STATEMENT OF EXPENDITURES COMPARED WITH AUTHORIZATIONS

FOR THE YEAR ENDED DECEMBER 31, 1969

EXPENSES:	APPROPRIATIONS	EXPENDITURES	UNEXPENDED BALANCE-DEFICIT*
<u>COUNTY TREASURER:</u>			
SALARIES	9 758	9 757	1
OFFICE EXPENSE	1 100	660	440
	<u>10 858</u>	<u>10 417</u>	<u>441</u>
<u>COUNTY CLERK:</u>			
SALARIES	118 546	118 545	1
OFFICE EXPENSE	28 745	26 273	2 472
NEW EQUIPMENT	5 000	4 638	362
LEGAL FEES	1 436	1 400	36
	<u>153 727</u>	<u>150 856</u>	<u>2 871</u>
<u>DATA PROCESSING DEPARTMENT:</u>			
SALARIES	42 013	42 008	5
OFFICE EXPENSE	5 530	5 572	42*
SUPPLIES & RENTALS	29 580	29 557	23
	<u>77 123</u>	<u>77 137</u>	<u>14*</u>
<u>DISTRICT ATTORNEY:</u>			
SALARIES	74 530	73 749	781
CAR ALLOWANCE	1 200	800	400
OFFICE EXPENSE	5 379	5 376	3
POST CONVICTION AFFAIRS	2 000	1 482	518
CONDUCT OF CRIM. AFFAIRS	3 243	2 675	568
	<u>86 352</u>	<u>84 082</u>	<u>2 270</u>
<u>DISTRICT CLERK:</u>			
SALARIES	62 588	62 488	100
OFFICE EXPENSE	8 345	8 319	26
NEW EQUIPMENT	3 250	3 220	30
LEGAL FEES	8 524	7 331	1 193
	<u>82 707</u>	<u>81 358</u>	<u>1 349</u>
<u>JUSTICE OF THE PEACE, 1-A:</u>			
SALARIES	14 851	14 727	124
OFFICE EXPENSE	670	511	159
	<u>15 521</u>	<u>15 238</u>	<u>283</u>
<u>JUSTICE OF THE PEACE, 1-B:</u>			
SALARIES	14 877	14 877	
OFFICE EXPENSE	500	487	13
	<u>15 377</u>	<u>15 364</u>	<u>13</u>
<u>JUSTICE COURTS:</u>			
VITAL STATISTICS	250	68	182
TRIAL FEES	66 100	63 257	2 843
INQUEST FEES	5 000	4 300	700
AUTOPSY FEES	16 375	16 375	
STATIONERY STOCK	1 025	909	116
SALARIES-CONSTABLES, OUTSIDE COUNTY SEAT	15 170	15 018	152
	<u>103 920</u>	<u>99 927</u>	<u>3 993</u>

COUNTY OF EL PASO, TEXAS

SCHEDULE B-6

GENERAL FUND

STATEMENT OF EXPENDITURES COMPARED WITH AUTHORIZATIONS

FOR THE YEAR ENDED DECEMBER 31, 1969

	<u>APPROPRIATIONS</u>	<u>EXPENDITURES</u>	<u>UNEXPENDED BALANCE-DEFICIT*</u>
<u>EXPENSES:</u>			
<u>CONSTABLE-PRECINCT #1:</u>			
SALARIES	12 021	12 021	
OFFICE EXPENSE	300	221	79
AUTO ALLOWANCE	3 000	3 000	
	<u>15 321</u>	<u>15 242</u>	<u>79</u>
<u>CITY-COUNTY HEALTH UNIT:</u>			
OPER. EXP. COUNTY PORTION	278 300	279 243	943*
	<u>278 300</u>	<u>279 243</u>	<u>943*</u>
<u>COMMUNITY RELIEF:</u>			
<u>PAUPERS:</u>			
BURIALS	4 500	4 412	88
CLOTHING	1 000	745	255
TRAVEL	100	100	
<u>GENERAL ASSISTANCE:</u>			
SALARIES	37 937	37 791	146
FOOD, RENT, ETC.	76 167	75 263	904
OFFICE EXPENSE	2 300	2 258	42
TRAVEL-STAFF	3 840	3 840	
TRAVEL-OTHER	383	383	
TELEPHONE & TELEGRAPH	1 100	1 098	2
UTILITIES	1 117	947	170
U.S.FOOD PROG.-OFF. EXP.	1 500	1 140	360
U.S.FOOD STAMP PROGRAM	46 900	46 900	
	<u>176 844</u>	<u>174 877</u>	<u>1 967</u>
<u>MENTAL HEALTH:</u>			
CLOTHING	1 325	1 308	17
TRIALS & CLERICAL	2 725	2 585	140
TRANSPORTATION	1 650	1 650	
	<u>5 700</u>	<u>5 543</u>	<u>157</u>
<u>PROBATION & JUVENILE HOME:</u>			
SALARIES-PROBATION DEPT.	81 730	81 729	1
SALARIES-JUVENILE HOME	36 809	36 809	
SUBSISTENCE & MAINTENANCE	11 491	11 364	127
UTILITIES	4 150	3 864	286
TRANSPORTATION	2 873	2 635	238
OFFICE EXPENSE	2 500	2 380	120
CAR ALLOWANCE	2 400	2 374	26
AUTOMOBILES - NEW	2 830	2 830	
	<u>144 783</u>	<u>143 985</u>	<u>798</u>

COUNTY OF EL PASO, TEXASGENERAL FUNDSTATEMENT OF EXPENDITURES COMPARED WITH AUTHORIZATIONSFOR THE YEAR ENDED DECEMBER 31, 1969

	<u>APPROPRIATIONS</u>	<u>EXPENDITURES</u>	<u>UNEXPENDED BALANCE-DEFICIT</u>
<u>EXPENSES:</u>			
<u>JUVENILE BOARD</u>			
SALARIES	21 836	21 836	
	21 836	21 836	
<u>CHILD WELFARE:</u>			
OPERATING EXP.-CO.PORTION	145 614	145 614	
	145 614	145 614	
<u>CHILD GUIDANCE:</u>			
SALARIES	30 433	30 433	
	30 433	30 433	
<u>CO-OPERATIVE EXTENSION SERVICE:</u>			
SALARIES	15 488	14 994	494
OFFICE EXPENSE	3 022	3 184	162*
HOME DEMONSTRATION	475	550	75*
TRAVEL-STAFF	3 250	3 200	50
NEW EQUIPMENT	486	486	
TRAVEL-OTHER	862	862	
	23 583	23 276	307
<u>CIVIL DEFENSE:</u>			
OPERATING EXPENSE	4 800	4 500	300
	4 800	4 500	300
<u>GENERAL EXPENSE:</u>			
ELECTION EXPENSE	22 204	22 247	43*
GROUP HOSPITAL INSURANCE	35 000	34 365	635
MISCELLANEOUS	5 535	5 090	445
POSTAGE	20 130	19 874	256
RETIREMENT PROG. EXPENSE	4 000	3 538	462
CONTRIBUTIONS-RETIREMENT	60 500	55 897	4 603
CONTRIBUTIONS-SOCIAL SECURITY	92 043	89 264	2 779
ASSESSING CHGE.-TAX ASSESSOR	31 866	31 866	
TRAVEL	5 670	5 670	
REGIONAL PLANNING	8 302	8 301	1
	285 250	276 112	9 138
<u>COUNTY LIBRARY:</u>			
SALARIES	18 099	17 997	102
RENT	3 000	3 000	
GAS, OIL & MAINTENANCE	1 050	1 055	5*
UTILITIES	900	889	11
NEW BOOKS	3 020	3 003	17
OFFICE SUPPLIES	800	793	7
CAR ALLOWANCE	420	420	
MISCELLANEOUS	1 000	1 000	
	28 289	28 157	132

COUNTY OF EL PASO, TEXAS

GENERAL FUND

STATEMENT OF EXPENDITURES COMPARED WITH AUTHORIZATIONS

FOR THE YEAR ENDED DECEMBER 31, 1969

	<u>APPROPRIATIONS</u>	<u>EXPENDITURES</u>	<u>UNEXPENDED BALANCE-DEFICIT*</u>
<u>EXPENSES:</u>			
<u>BOARD OF DEVELOPMENT:</u>			
SALARIES	2 093	2 093	
OFFICE EXPENSE	1 294	1 294	
CAR ALLOWANCE	200	200	
	<u>3 587</u>	<u>3 587</u>	
<u>INDUSTRIAL BOARD:</u>			
OPERATING ALLOWANCE	15 000	15 000	
	<u>15 000</u>	<u>15 000</u>	
<u>ANIMAL CONTROL CENTER:</u>			
OPERATING ALLOWANCE (COUNTY PORTION)	24 000	24 000	
	<u>24 000</u>	<u>24 000</u>	
<u>VETERANS ASSISTANCE:</u>			
SALARIES	22 692	22 542	150
TRAVEL	1 800	1 800	
OFFICE EXPENSE	1 375	1 375	
	<u>25 867</u>	<u>25 717</u>	150
<u>DISTRICT COURTS:</u>			
OFFICE EXPENSE	4 800	4 382	418
6TH. JUDICIAL DIST. EXPENSE	1 920	1 920	
REPORTERS' SALARIES	43 075	42 311	764
INTERPRETERS' SALARIES	4 864	4 864	
	<u>54 659</u>	<u>53 477</u>	1 182
<u>COURTHOUSE:</u>			
SALARIES-HEATING PLANT	38 812	38 812	
SALARIES-JANITOR	68 977	68 915	62
FUEL	12 600	10 536	2 064
LIGHT & POWER	49 454	46 023	3 431
WATER	7 700	7 145	555
TELEPHONE & TELEGRAPH	6 900	6 631	269
INSURANCE	13 400	13 249	151
JANITOR SUPPLIES	6 000	5 840	160
CUSTODIAL MAINTENANCE	1 850	1 850	
BUILDING CHARGES	26 150	25 114	1 036
FURNITURE & FIXTURES	2 421	2 347	74
	<u>234 264</u>	<u>226 462</u>	7 802

COUNTY OF EL PASO, TEXAS

GENERAL FUND

STATEMENT OF EXPENDITURES COMPARED WITH AUTHORIZATIONS

FOR THE YEAR ENDED DECEMBER 31, 1969

<u>EXPENSES:</u>	<u>APPROPRIATIONS</u>	<u>EXPENDITURES</u>	<u>UNEXPENDED BALANCE-DEFICIT</u>
<u>PARKS & RECREATION:</u>			
SALARIES-ADMINISTRATIVE	6 608	6 607	1
SALARIES-ALL PARKS	39 787	39 787	
MISCELLANEOUS EXPENSE	1 091	1 091	
YOUTH ACTIVITY PROGRAM	5 913	5 913	
PARKS OPERATING EXPENSE	19 100	18 994	106
<u>IMPROVEMENTS:</u>			
ASCARATE PARK	9 799	9 788	11
LOWER VALLEY	1 000	999	1
McKELLIGON CANYON	3 103	2 146	957
TOM MAYS MEMORIAL PARK	706	706	
	<u>87 107</u>	<u>86 031</u>	<u>1 076</u>
<u>ASCARATE PARK GOLF COURSE:</u>			
SALARIES	81 445	81 347	98
SUPPLIES & REPAIRS	19 306	19 211	95
GAS & OIL	2 400	2 258	142
UTILITIES	12 700	12 045	655
FERTILIZER & CHEMICALS	7 975	7 954	21
ASCARATE PK GOLF CRSE PROJECT	3 200	3 200	
	<u>127 026</u>	<u>126 015</u>	<u>1 011</u>
<u>COLISEUM & LIBERTY HALL:</u>			
SALARIES-ADMINISTRATIVE	14 055	14 055	
EXPENSES-ADMINISTRATIVE	1 000	338	662
EXPENSES-AUTO	1 500	1 329	171
	<u>16 555</u>	<u>15 722</u>	<u>833</u>
<u>COLISEUM:</u>			
SALARIES	48 294	47 990	304
SUPPLIES	9 000	7 026	1 974
UTILITIES	10 500	8 520	1 980
REPAIRS	1 500	983	517
IMPROVEMENTS	1 500	1 385	115
	<u>70 794</u>	<u>65 904</u>	<u>4 890</u>
<u>LIBERTY HALL:</u>			
SALARIES	5 936	5 935	1
SUPPLIES	2 000	1 085	915
IMPROVEMENTS	1 000		1 000
	<u>8 936</u>	<u>7 020</u>	<u>1 916</u>
 TOTAL EXPENSES	 <u>3 532 460</u>	 <u>3 477 977</u>	 <u>54 483</u>

COUNTY OF EL PASO, TEXASROAD & BRIDGE FUNDBALANCE SHEETDECEMBER 31, 1969

<u>ASSETS</u>		
CASH		52 079
TAXES RECEIVABLE:		
CURRENT	70 974	
DELINQUENT	<u>9 735</u>	
	80 709	
LESS: RESERVE FOR UNCOLLECTIBLE TAXES	<u>16 492</u>	
NET TAXES RECEIVABLE		64 217
MISCELLANEOUS RECEIVABLES & FEES		48 296
INVESTMENTS - SHORT TERM		40 000
		<hr/>
TOTAL ASSETS		<u>204 592</u>
 <u>LIABILITIES, RESERVES AND SURPLUS</u>		
WARRANTS PAYABLE		9 718
RESERVES:		
1969 ENCUMBRANCES	187 575	
CONTINGENCIES	<u>8 435</u>	196 010
FUND BALANCE:		
BALANCE-(DEFICIT)		<u>(1 136)</u>
TOTAL LIABILITIES, RESERVES & FUND BALANCE		<u>204 592</u>

COUNTY OF EL PASO, TEXAS
ROAD & BRIDGE FUND
ANALYSIS OF CHANGES IN FUND BALANCE
DECEMBER 31, 1969

FUND BALANCE, 1-1-69		24 315
ADD:		
REVENUES		<u>422 841</u>
TOTAL FUND BALANCE & ADDITIONS		447 156
DEDUCT:		
EXPENDITURES	446 070	
CHANGES IN ALLOCATION OF TAX RATES	<u>2 222</u>	448 292
		<hr/>
FUND BALANCE- (DEFICIT)		<u><u>(1 136)</u></u>

COUNTY OF EL PASO, TEXAS

ROAD & BRIDGE FUND

STATEMENT OF REVENUES- ESTIMATED AND ACTUAL

FOR THE YEAR ENDED DECEMBER 31st., 1969

	ESTIMATED	ACTUAL	ACTUAL OVER OR UNDER*-ESTIMATED
REVENUES:			
AD VALOREM TAXES	170 540	170 199	341*
AD VALOREM TAXES-DELINQUENT	3 930	3 349	581*
AUTO LICENSE FEES	175 000	175 000	
OIL, GAS, GREASE, ETC., REF.	15 000	16 315	1 315
LATERAL ROAD FUNDS	54 000	54 690	690
MISCELLANEOUS	1 500	725	775*
INTEREST	2 000	2 563	563
TOTAL REVENUES	421 970	422 841	871

STATEMENT OF EXPENDITURES COMPARED WITH AUTHORIZATIONS

FOR THE YEAR ENDED DECEMBER 31, 1969

	APPROPRIATIONS	EXPENDITURES	UNEXPENDED BALANCE-*DEFICIT
EXPENSES:			
ADMINISTRATIVE:			
COMMISSIONERS' SALARIES	33 995	33 995	
COMMISSIONERS' MILEAGE	7 500	7 500	
	<u>41 495</u>	<u>41 495</u>	
ENGINEER DEPARTMENT:			
SALARIES-ADMINISTRATIVE	33 223	33 223	
CAR EXPENSE	800	728	72
OFFICE EXPENSE	1 241	1 247	6*
TRAVEL EXPENSE	21	21	
	<u>35 285</u>	<u>35 219</u>	<u>66</u>
CONSTRUCTION & MAINTENANCE OF ROADS, BRIDGES, ETC.:			
SALARIES	215 565	215 224	341
LATERAL ROAD MAINTENANCE	84 954	85 466	512*
OTHER PRECINCT EXPENSE	19 685	19 696	11*
	<u>320 204</u>	<u>320 386</u>	<u>182*</u>
MISCELLANEOUS:			
CONTRIBUTIONS:			
SOCIAL SECURITY	13 700	13 348	352
RETIREMENT	8 500	9 399	899*
CEMETERY & CLINICS	71	71	
ASSESSING CHARGES-TAX ASSESSOR	2 715	2 715	
	<u>24 986</u>	<u>25 533</u>	<u>547*</u>
TOTAL EXPENDITURES	421 970	422 633	663*

COUNTY OF EL PASO, TEXAS

JURY FUND

BALANCE SHEET

DECEMBER 31, 1969

ASSETS

CASH		25 084
TAXES RECEIVABLE:		
CURRENT	24 863	
DELINQUENT	<u>3 410</u>	
	28 273	
LESS:		
RESERVE FOR UNCOLLECTIBLE TAXES	<u>5 777</u>	
NET TAXES RECEIVABLE		22 496
MISCELLANEOUS RECEIVABLES & FEES		483
INVESTMENTS - SHORT TERM		<u>25 000</u>
TOTAL ASSETS		<u><u>73 063</u></u>

LIABILITIES, RESERVES AND FUND BALANCE

WARRANTS PAYABLE		22
RESERVE FOR ENCUMBRANCES		65 709
FUND BALANCE		<u>7 332</u>
TOTAL LIABILITIES, RESERVES AND FUND BALANCE		<u><u>73 063</u></u>

COUNTY OF EL PASO, TEXAS

JURY FUND

ANALYSIS OF CHANGES IN FUND BALANCE

DECEMBER 31, 1969

FUND BALANCE, 1-1-69		10 565
ADD:		
REVENUES		<u>65 803</u>
		76 368
DEDUCT:		
EXPENDITURES	61 231	
CHANGES IN ALLOCATION OF TAX RATES	<u>7 805</u>	69 036
		<u> </u>
FUND BALANCE, 12-31-69		<u><u>7 332</u></u>

COUNTY OF EL PASO, TEXAS

JURY FUND

STATEMENT OF REVENUES - ESTIMATED AND ACTUAL

FOR THE YEAR ENDED DECEMBER 31st., 1969

	<u>ESTIMATED</u>	<u>ACTUAL</u>	<u>ACTUAL OVER OR UNDER* ESTIMATED</u>
<u>REVENUES:</u>			
AD VALOREM TAXES	50 200	56 725	6 525
AD VALOREM TAXES-DELINQUENT	1 375	1 020	355*
JURY FEES	4 525	4 986	461
OCCUPATION LICENSES	4 200	2 285	1 915*
MISCELLANEOUS INTEREST	400	787	387
	<u>60 700</u>	<u>65 803</u>	<u>5 103</u>

STATEMENT OF EXPENDITURES COMPARED WITH AUTHORIZATIONS

FOR THE YEAR ENDED DECEMBER 31st., 1969

	<u>APPROPRIATIONS</u>	<u>EXPENDITURES</u>	<u>UNEXPENDED BALANCE - DEFICIT*</u>
<u>EXPENSES:</u>			
<u>JURY EXPENSE:</u>			
JURORS' MEALS & EXPENSE	1 075	820	255
JURORS' SCRIPT	55 934	56 724	790*
JURY BAILIFF	2 740	2 737	3
<u>GENERAL:</u>			
ASSESSING	951	951	
<u>TOTAL EXPENSES</u>	<u>60 700</u>	<u>61 232</u>	<u>532*</u>

COUNTY OF EL PASO, TEXASPUBLIC BUILDING FUNDBALANCE SHEETDECEMBER 31, 1969ASSETS

CASH	73 172
DEFERRED CHARGES:	
CONSTRUCTION OF 41ST. & 168TH. DISTRICT COURTROOMS	<u>138 777</u>
TOTAL ASSETS	<u><u>211 949</u></u>

LIABILITIES, RESERVES AND FUND BALANCE

APPROPRIATIONS	198 111
RESERVE FOR CONTINGENCIES	122
FUND BALANCE	<u>13 716</u>
TOTAL LIABILITIES, RESERVES & FUND BALANCE	<u><u>211 949</u></u>

COUNTY OF EL PASO, TEXAS
PUBLIC BUILDING FUND
ANALYSIS OF CHANGES IN FUND BALANCE
DECEMBER 31, 1969

FUND BALANCE, 1-1-69	38 523
ADD:	
REVENUES	2
TOTAL FUND BALANCE & ALLOCATIONS	38 525
DEDUCT:	
EXPENDITURES	24 809
FUND BALANCE, 12-31-69	13 716

COUNTY OF EL PASO, TEXAS
PUBLIC BUILDING & IMPROVEMENT FUND
STATEMENT OF REVENUES - ESTIMATED AND ACTUAL
FOR THE YEAR ENDED DECEMBER 31, 1969

<u>REVENUES:</u>	<u>ESTIMATED</u>	<u>ACTUAL</u>	<u>ACTUAL OVER OR UNDER* ESTIMATED</u>
MISCELLANEOUS		2	2
TOTAL REVENUES		2	2

STATEMENT OF EXPENDITURES COMPARED WITH AUTHORIZATIONS
FOR THE YEAR ENDING DECEMBER 31, 1969

<u>EXPENSES:</u>	<u>APPROPRIATIONS</u>	<u>EXPENDITURES</u>	<u>UNEXPENDED BALANCE</u>
		24 809	24 809 ^(N)
TOTAL EXPENSES		24 809	24 809

(N) NOTE: ALL EXPENDITURES AGAINST THE CONSTRUCTION OF A PROJECT IS CHARGED INTO A DEFERRED CHARGE ACCOUNT UNTIL DATE OF FINAL COMPLETION. DUE TO PROJECT COMPLETION, \$24,809 WAS CHARGED AGAINST THE FUND BALANCE IN 1969.

COUNTY OF EL PASO, TEXAS

INTEREST & SINKING FUNDS

BALANCE SHEET

DECEMBER 31, 1969

ASSETS

CASH		81 364
TAXES RECEIVABLE:		
CURRENT	166 515	
DELINQUENT	<u>22 838</u>	
	189 353	
LESS:		
RESERVE FOR UNCOLLECTIBLE TAXES	<u>38 691</u>	
NET TAXES RECEIVABLE		150 662
INVESTMENTS - SHORT TERM		<u>225 000</u>
TOTAL ASSETS		<u><u>457 026</u></u>

LIABILITIES, RESERVES AND FUND BALANCE

RESERVE FOR ENCUMBRANCES		440 079
FUND BALANCE		<u>16 947</u>
TOTAL LIABILITIES, RESERVES AND FUND BALANCE		<u><u>457 026</u></u>

COUNTY OF EL PASO, TEXAS

INTEREST & SINKING FUND

ANALYSIS OF CHANGES IN FUND BALANCE

DECEMBER 31, 1969

FUND BALANCE, 1-1-69		9 432
ADD:		
REVENUES	426 864	
CHANGES IN ALLOCATION OF TAX RATES	<u>19 951</u>	<u>446 815</u>
TOTAL FUND BALANCE & ADDITIONS		456 247
DEDUCT:		
EXPENDITURES	423 080	
CASH IN ESCROW WITH FISCAL AGENT	<u>16 220</u>	<u>439 300</u>
FUND BALANCE, 12-31-69		<u><u>16 947</u></u>

COUNTY OF EL PASO, TEXASINTEREST AND SINKING FUNDSSTATEMENT OF REVENUES - ESTIMATED AND ACTUALFOR THE YEAR ENDED DECEMBER 31^{ST.}, 1969

	<u>ESTIMATED</u>	<u>ACTUAL</u>	<u>ACTUAL OVER OR UNDER* ESTIMATED</u>
<u>REVENUES:</u>			
AD VALOREM TAXES	431 200	410 065	21 135*
AD VALOREM TAXES-DELINQUENT	8 100	8 424	324
INTEREST FROM INVESTMENTS	921	8 375	7 454
TOTAL REVENUES	<u>440 221</u>	<u>426 864</u>	<u>13 357*</u>

STATEMENT OF EXPENDITURES COMPARED WITH AUTHORIZATIONSFOR THE YEAR ENDED DECEMBER 31^{ST.}, 1969

	<u>APPROPRIATIONS</u>	<u>EXPENDITURES</u>	<u>UNEXPENDED BALANCE</u>
<u>EXPENSES:</u>			
ASSESSING CHARGES - TAX ASSESSOR	6 700	6 371	329
INTEREST ON PUBLIC DEBT	142 021	141 581	440
FISCAL AGENTS' FEES-SERVICING PUBLIC DEBT	1 500	1 128	372
	<u>150 221</u>	<u>149 080</u>	<u>1 141</u>
CASH PAID TO FISCAL AGENTS FOR RETIREMENT OF PUBLIC DEBT	<u>290 000</u>	<u>274 000</u>	<u>16 000</u>
TOTAL EXPENSES	<u>440 221</u>	<u>423 080</u>	<u>17 141</u>

COUNTY OF EL PASO, TEXAS

TRUST FUNDS

BALANCE SHEET

DECEMBER 31, 1969

A S S E T S

	<u>TOTAL</u>	<u>PERMANENT SCHOOL FUND</u>	<u>EMPLOYEES RETIREMENT FUND</u>	<u>SOCIAL SECURITY FUND</u>	<u>COUNTY LAW LIBRARY FUND</u>	<u>TITLE 1 LIBRARY FUND</u>
CASH	113 521	7 794	41 571	48 039	16 082	35
RECEIVABLES	1 015				1 015	
SECURITIES	1 389 218	85 969	1 303 249			
TOTAL ASSETS	1 503 754	93 763	1 344 820	48 039	17 097	35

LIABILITIES & FUND BALANCES

FUND BALANCES	1 503 754	93 763	1 344 820	48 039	17 097	35
TOTAL LIABILITIES & FUND BALANCES	1 503 754	93 763	1 344 820	48 039	17 097	35

COUNTY OF EL PASO, TEXAS

TRUST FUNDS

STATEMENT OF CASH RECEIPTS AND DISBURSEMENTS

FOR THE YEAR ENDED DECEMBER 31, 1969

	<u>TOTAL</u>	<u>EMPLOYEES RETIREMENT FUND</u>
CASH BALANCE, JAN. 1, 1969	98 288	43 954
RECEIPTS:		
EMPLOYEES' SAVINGS FUND	65 364	65 364
COUNTY CONTRIBUTION:		
MEMBERSHIP ACCUMULATED FUND	37 219	37 219
PRIOR SERVICE ANNUITY RESERVE FUND	28 077	28 077
INTEREST ON INVESTMENTS	58 339	54 556
LIBRARY FEES FROM SUITS	11 468	
EMPLOYEE PAYMENTS	102 167	
U.S. GOVERNMENT GRANT	3 755	
COUNTY PAYMENTS	102 597	
INVESTMENTS MATURED/SOLD	7 234	6 234
TOTAL RECEIPTS	416 220	191 450
TOTAL AVAILABLE FUNDS	514 508	235 404
DISBURSEMENTS:		
INVESTMENTS PURCHASED PAR VALUE	110 000	110 000
PREMIUM ON INVESTMENT	1 264	1 264
TOTAL	111 264	111 264
LESS: DISCOUNT ON INVESTMENTS	3 600	3 600
TOTAL	107 664	107 664
EMPLOYEES' SAVINGS FUND	37 372	37 372
PRIOR SERVICE ANNUITY RESERVE FUND	29 720	29 720
MEMBERSHIP ANNUITY RESERVE FUND	19 077	19 077
CUSTODIAL SERVICE & PUBLICATIONS	6 085	
PAYMENTS TO STATE OF TEXAS	197 349	
LIBRARY BOOKS - PER GRANT	3 720	
TOTAL DISBURSEMENTS	400 987	193 833
CASH BALANCE - DECEMBER 31, 1969	113 521	41 571

COUNTY OF EL PASO, TEXAS

TRUST FUNDS

STATEMENT OF CASH RECEIPTS AND DISBURSEMENTS

FOR THE YEAR ENDED DECEMBER 31, 1969

SOCIAL SECURITY FUND	COUNTY LAW LIBRARY FUND	TITLE 1. LIBRARY FUND	PERMANENT SCHOOL FUND
40 624	10 699		3 011
			3 783
102 167	11 468		
		3 755	
102 597			1 000
204 764	11 468		4 783
245 388	22 167	3 755	7 794
	6 085		
197 349		3 720	
197 349	6 085	3 720	
48 039	16 082	35	7 794

COUNTY OF EL PASO, TEXAS
COMPARATIVE STATEMENT OF FIXED ASSETS
DECEMBER 31, 1969

<u>GENERAL FIXED ASSETS</u>	<u>JANUARY 1 1969</u>	<u>CHANGES YEAR 1969</u>	<u>DECEMBER 31 1969</u>
LAND	1 360 494	(6 028)	1 354 466
BUILDINGS	7 328 699	319 890	7 648 589
ROAD & HIGHWAYS	1 422 183	7 046	1 429 229
BRIDGES & CULVERTS	86 200	8 100	94 300
FLOOD CONTROL PROJECTS	98 937	(14 490)	84 447
EQUIPMENT	825 345	37 499	862 844
FURNITURE & FURNISHINGS	210 095	30 241	240 336
VOTING MACHINES	332 640		332 640
TOTAL	<u>11 664 593</u>	<u>382 258</u>	<u>12 046 851</u>

COUNTY OF EL PASO, TEXASDETAILED STATEMENT OF GENERAL FIXED ASSETSDECEMBER 31, 1969

<u>GENERAL FIXED ASSETS</u>		<u>TOTAL</u>
LAND		1 354 466
BUILDINGS		7 648 589
ROADS & HIGHWAYS		1 429 229
BRIDGES & CULVERTS		94 300
FLOOD CONTROL PROJECTS		84 447
EQUIPMENT AND FURNISHINGS:		
AUTOMOBILES & TRUCKS		191 623
EQUIPMENT:		
HEAVY DUTY	164 125	
LIGHT	175 311	
SHOP	23 663	
COMMUNICATIONS	29 207	
RECREATION & PLAYGROUND SHOP	39 442	
FURNITURE & FURNISHINGS	240 336	
OFFICE MACHINES	192 076	
LIBRARY BOOKS	<u>47 397</u>	911 557
VOTING MACHINES		<u>332 640</u>
TOTAL		<u><u>12 046 851</u></u>
INVESTMENT IN GENERAL FIXED ASSETS (ESTIMATED)		
FROM GENERAL OBLIGATION BONDS		7 637 000
FROM EXPENDITURES OF CURRENT REVENUES		<u>4 409 851</u>
TOTAL		<u><u>12 046 851</u></u>

NOTE:

COUNTY RECORDS PRIOR TO YEAR 1958 PROVIDED FEW DETAILS CONCERNING THE FIXED ASSETS. THE BASIS FOR OUR CURRENT RECORDS WAS ESTABLISHED BY THE CERTIFIED PUBLIC ACCOUNTING FIRM ENGAGED TO PERFORM THE ANNUAL AUDIT FOR THE YEAR 1958. INFORMATION WAS DERIVED FROM VARIOUS DOCUMENTARY SOURCES AS WELL AS FROM FAIR VALUE APPRAISALS BY VARIOUS DEPARTMENTS.

COUNTY OF EL PASO, TEXAS
ANALYSIS OF CHANGES IN BONDED DEBT
DURING CALENDAR YEAR 1969

<u>BOND ISSUE</u>	<u>DATE OF</u>		<u>RATE OF INTEREST</u>
	<u>ISSUE</u>	<u>MATURITY</u>	
PERMANENT IMPROVEMENT REFUNDING COURTHOUSE	1 - 1-50	1 - 1-70	2 1/2 - 2 3/4%
PERMANENT IMPROVEMENT REFUNDING ROAD & BRIDGE REFUNDING	9 -10-55	9 -10-85	2 3/4 - 3%
PERMANENT IMPROVEMENT REFUNDING ROAD & BRIDGE REFUNDING	6 - 1-55	6 - 1-76	2 3/4%
PERMANENT IMPROVEMENT REFUNDING ROAD & BRIDGE REFUNDING	10 -10-55	10-10-70	2 3/4%
PERMANENT IMPROVEMENT REFUNDING ROAD & BRIDGE REFUNDING	10 -15-56	10-15-71	3%
PERMANENT IMPROVEMENT REFUNDING ROAD & BRIDGE REFUNDING	4 -10-58	4 -10-70	3 1/2%
PERMANENT IMPROVEMENT REFUNDING ROAD & BRIDGE REFUNDING	12 - 1-59	12- 1-79	3 3/4 - 4 - 4 1/4%
PERMANENT IMPROVEMENT REFUNDING ROAD & BRIDGE REFUNDING	4 - 1-60	4 - 1-75	4 1/4%
PERMANENT IMPROVEMENT REFUNDING ROAD & BRIDGE REFUNDING	8 - 1-60	8 - 1-75	4 1/4%
PERMANENT IMPROVEMENT REFUNDING ROAD & BRIDGE REFUNDING	5 - 1-61	5 - 1-76	3- 3 1/5- 3 3/4%
PERMANENT IMPROVEMENT REFUNDING PARK	10 - 1-61	10- 1-81	3 2/5 - 3 1/2%
PERMANENT IMPROVEMENT REFUNDING ROAD & BRIDGE REFUNDING	8 - 1-65	8 - 1-80	3 3/5- 3 7/10 - 5%
PERMANENT IMPROVEMENT REFUNDING ROAD & BRIDGE REFUNDING	10 - 1-65	10- 1-80	3 - 3 1/2%
PERMANENT IMPROVEMENT REFUNDING ROAD & BRIDGE REFUNDING			3 1/10 - 4 3/4%
PERMANENT IMPROVEMENT REFUNDING ROAD & BRIDGE REFUNDING			3 1/4 - 3 1/10
PERMANENT IMPROVEMENT REFUNDING ROAD & BRIDGE REFUNDING			3 2/5 - 5%
TOTAL BONDED INDEBTEDNESS			
MORTGAGE DEBT			NONE
TOTAL INDEBTEDNESS			

COUNTY OF EL PASO, TEXAS
ANALYSIS OF CHANGES IN BONDED DEBT
DURING CALENDAR YEAR 1969

M A T U R I T I E S		B O N D S			
P R I N C I P A L	I N T E R E S T	A U T H O R I Z E D & I S S U E D	B A L A N C E 1 - 1 - 6 9	R E D E E M E D 1 9 6 9	B A L A N C E 1 2 - 3 1 - 6 9
JANUARY	JAN. - JUL.	266 000	32 000	16 000	16 000
SEPTEMBER	MAR. - SEP.	1 000 000	651 000	31 000	620 000
JUNE	JUN. - DEC.	130 000	66 000	7 000	59 000
OCTOBER	APR. - OCT.	164 000	30 000	15 000	15 000
OCTOBER	APR. - OCT.	188 000	45 000	15 000	30 000
APRIL	APR. - OCT.	115 000	29 000	14 000	15 000
DECEMBER	JUN. - DEC.	567 000	477 000	37 000	440 000
APRIL	APR. - OCT.	263 000	180 000	20 000	160 000
AUGUST	FEB. - AUG.	100 000	65 000	5 000	60 000
MAY	MAY - NOV.	550 000	430 000	30 000	400 000
OCTOBER	APR. - OCT.	1 750 000	1 580 000	50 000	1 530 000
AUGUST	FEB. - AUG.	380 000	300 000	25 000	275 000
OCTOBER	APR. - OCT.	300 000	285 000	5 000	280 000
		5 773 000	4 170 000	270 000	3 900 000
JANUARY		80 000	20 000	20 000	
		5 853 000	4 190 000	290 000	3 900 000

COUNTY OF EL PASO, TEXAS
BOND PRINCIPAL & INTEREST BY VARIOUS ISSUES
DUE DECEMBER 31, 1969

<u>DESCRIPTION</u>	<u>YEAR ISSUED</u>	<u>PRINCIPAL</u>	<u>INTEREST</u>
PERMANENT IMPROVEMENT REFUNDING	1950	16 000	220
PERMANENT IMPROVEMENT REFUNDING	1965	275 000	50 237
COURTHOUSE	1955	620 000	167 080
PERMANENT IMPROVEMENT REFUNDING	1955	59 000	6 118
ROAD & BRIDGE REFUNDING	1955	15 000	413
ROAD & BRIDGE REFUNDING	1956	30 000	1 350
BULL BARN	1958	15 000	262
PERMANENT IMPROVEMENT REFUNDING	1959	440 000	106 450
PERMANENT IMPROVEMENT REFUNDING	1960	160 000	21 888
ROAD & BRIDGE REFUNDING	1960	60 000	9 860
ROAD & BRIDGE REFUNDING	1961	400 000	51 960
PARK	1961	1 530 000	418 940
ROAD & BRIDGE REFUNDING	1965	280 000	119 878
<hr/>			
TOTAL		3 900 000	954 656

COUNTY OF EL PASO, TEXASSTATEMENT OF GENERAL BONDED AND MORTGAGE DEBT AND INTERESTDECEMBER 31, 1969AMOUNT AVAILABLE AND TO BE PROVIDEDFOR PAYMENT OF GENERAL BONDS, MORTGAGES AND INTEREST

AMOUNT AVAILABLE IN INTEREST AND REDEMPTION FUNDS	306 364
TO BE PROVIDED IN FUTURE YEARS FOR PAYMENT OF GENERAL BONDS, MORTGAGES AND INTEREST	4 548 292
	<hr/>
TOTAL AVAILABLE AND TO BE PROVIDED	<u>4 854 656</u>

GENERAL BONDS, AND INTEREST PAYABLE IN FUTURE YEARS:

BONDS PAYABLE	3 900 000
INTEREST PAYABLE IN FUTURE YEARS	954 656
	<hr/>
TOTAL BONDS, AND INTEREST PAYABLE	<u>4 854 656</u>

COUNTY OF EL PASO, TEXAS
SCHEDULE OF DEBT SERVICE CHARGES
ON BONDED INDEBTEDNESS UNTIL MATURITY
AS OF DECEMBER 31, 1969

<u>YEARS OF MATURITY</u>	<u>PRINCIPAL</u>	<u>INTEREST</u>	<u>TOTAL</u>
1970	298 000	133 040	431 040
1971	273 000	123 370	396 370
1972	275 000	113 809	388 809
1973	303 000	104 100	407 100
1974	311 000	93 610	404 610
1975	350 000	82 695	432 695
1976	357 000	70 935	427 935
1977	278 000	60 215	338 215
1978	284 000	50 437	334 437
1979	295 000	40 295	335 295
1980	261 000	29 745	290 745
1981	247 000	20 565	267 565
1982	63 000	11 780	74 780
1983	94 000	9 830	103 830
1984	105 000	6 810	111 810
1985	<u>106 000</u>	<u>3 420</u>	<u>109 420</u>
TOTAL	<u><u>3 900 000</u></u>	<u><u>954 656</u></u>	<u><u>4 854 656</u></u>

COUNTY OF EL PASO, TEXAS
TAX LEVIES AND TAX COLLECTIONS
FOR THE LAST TEN YEARS
DECEMBER 31, 1969

<u>YEAR</u>	<u>TOTAL TAXES LEVIED</u>	<u>DELINQUENT AT JUNE 30 FOLLOWING YEAR</u>	<u>COLLECTION CURRENT YEAR</u>	<u>PERCENTAGE OF LEVY DURING YEAR</u>
1968	2 824 334	80 214	2 744 120	97.2
1967	2 725 164	75 201	2 649 963	97.2
1966	2 655 117	77 226	2 577 891	97.1
1965	2 578 043	79 507	2 498 536	96.8
1964	2 507 219	86 567	2 420 652	96.6
1963	2 454 699	99 074	2 355 625	95.6
1962	2 338 242	79 634	2 258 608	96.6
1961	1 998 283	73 505	1 924 778	96.3
1960	1 882 477	86 266	1 796 211	95.4
1959	<u>1 725 293</u>	<u>59 109</u>	<u>1 666 184</u>	<u>96.6</u>
TOTAL	<u><u>23 688 871</u></u>	<u><u>796 303</u></u>	<u><u>22 892 568</u></u>	<u><u>96.6</u></u>

COUNTY OF EL PASO, TEXAS
TAX RATES AND FUND ALLOCATION
FOR THE LAST TEN YEARS

<u>YEAR</u>	<u>TOTAL TAX RATE</u>	<u>GENERAL FUND</u>	<u>ROAD & BRIDGE FUND</u>	<u>JURY FUND</u>	<u>PUB. BLDG. & IMPRVMT. FUND</u>	<u>SINKING FUND</u>
1969	.95000	.72245	.06156	.02156		.14443
1968	.95000	.71762	.06033	.01767		.15438
1967	.95000	.72200	.03211	.01718	.00769	.17102
1966	.95000	.70652	.06351	.01609		.16388
1965	.95000	.69027	.06925	.01710		.17338
1964	.95000	.70000	.07300	.01700		.16000
1963	.95000	.65000	.0600	.01800	.03900	.18300
1962	.95000	.61750	.11400	.01900		.19950
1961	.85000	.56600	.05550	.00850	.04500	.17500
1960	.85000	.40800	.06100	.05100	.14300	.18700

EL PASO COUNTY

MISCELLANEOUS STATISTICAL FACTS

<u>DATE OF INCORPORATION</u>	1871		
<u>FORM OF GOVERNMENT</u>	A PUBLIC CORPORATION AND POLITICAL SUBDIVISION OF THE STATE OF TEXAS		
<u>AREA (SQUARE MILES)</u>	1054		
<u>ALTITUDE</u>	3500 - 7100 FEET		
<u>CLIMATE</u>	<u>MAX.</u>	<u>MIN.</u>	<u>AVERAGE</u>
TEMPERATURE (°F) NORMAL MEAN	77.2	49.4	63.3
1969 MEAN	78.8	51.5	65.2
RAINFALL NORMAL MEAN ANNUAL	7.89 INCHES		
1969 TOTAL	4.34 INCHES		
<u>POPULATION GROWTH</u>	<u>YEAR</u>		
	1880	736	
	1950	194,986	
	1960	314,070	
	1968 (EST)	394,000	
	1969 (EST)	400,040	
<u>REGISTERED VOTERS (GENERAL ELECTION)</u>		<u>1964</u>	<u>1968</u>
		62,671	88,913
<u>VOTES CAST</u>		57,602	66,796
<u>AUTOMOBILE REGISTRATIONS</u>	(1967-1968 FISCAL YEAR)		138,202
	(1968-1969 " ")		143,029
<u>NUMBER COUNTY EMPLOYEES</u>	DECEMBER 31, 1969		439
<u>RETAIL SALES</u>	1968	\$ 492,480,000	
	1969	518,909,000	
<u>BANK DEPOSITS</u>	1968	464,665,959	
	1969	482,839,731	
<u>RADIO STATIONS</u>			8
<u>TELEVISION STATIONS</u>			3
<u>NEWSPAPERS</u>			2
<u>CHURCHES</u>			233 (EST)