

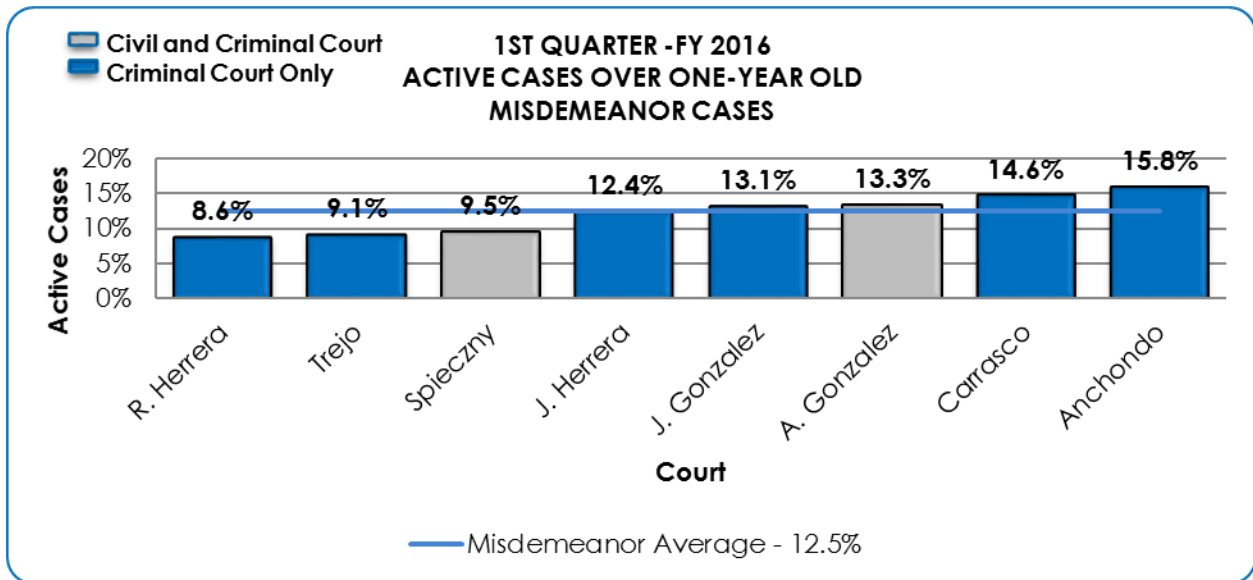


Measure 6: Age of Active Cases Pending

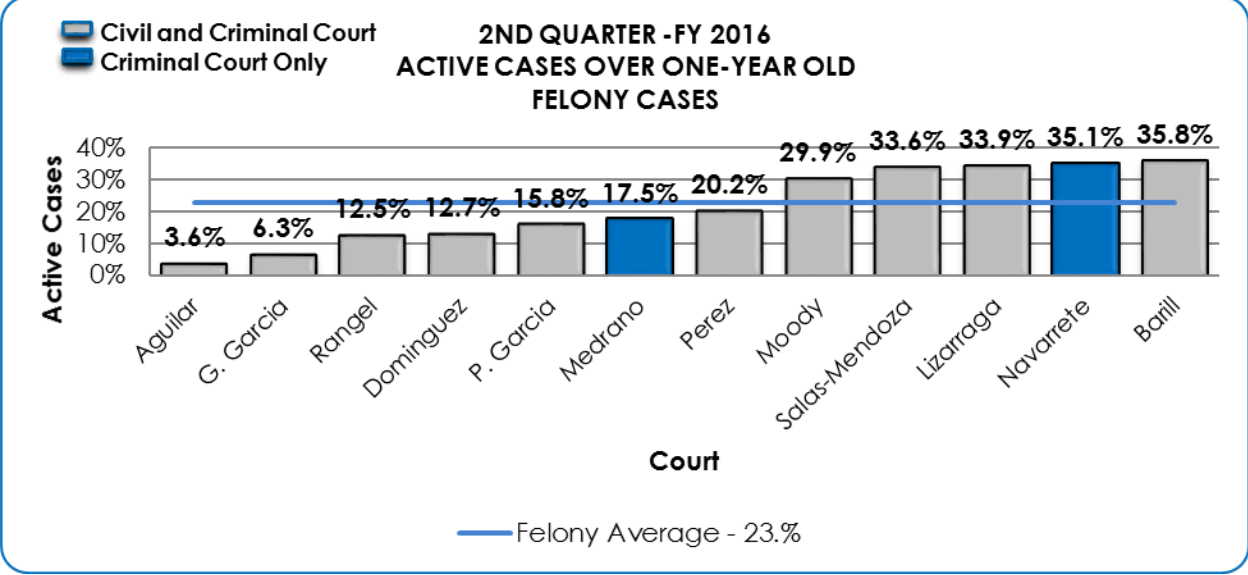
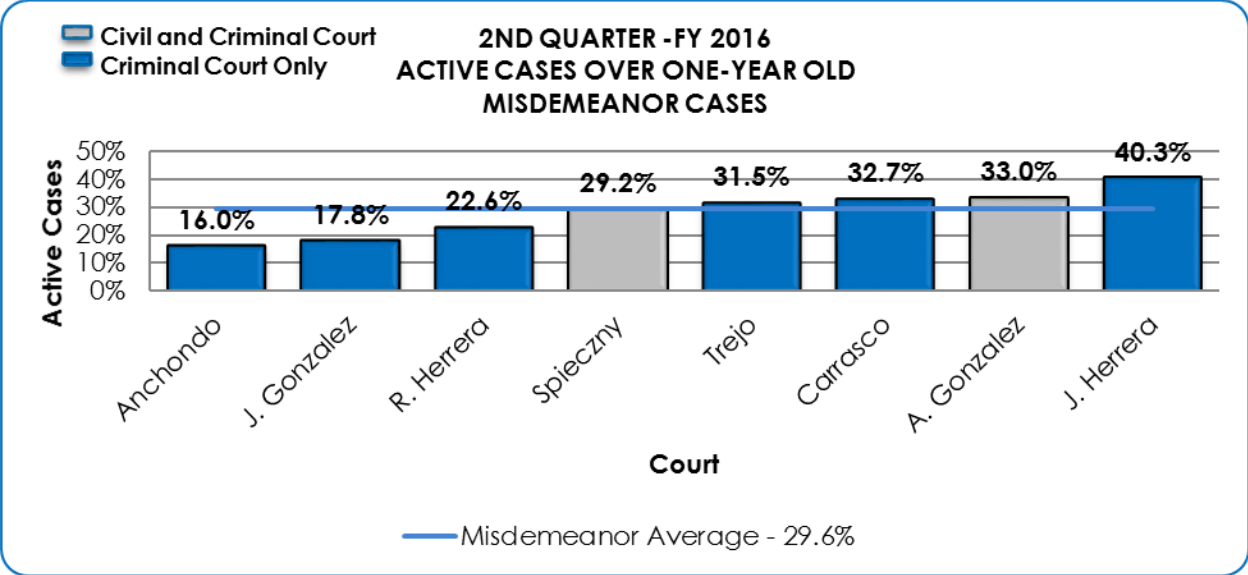
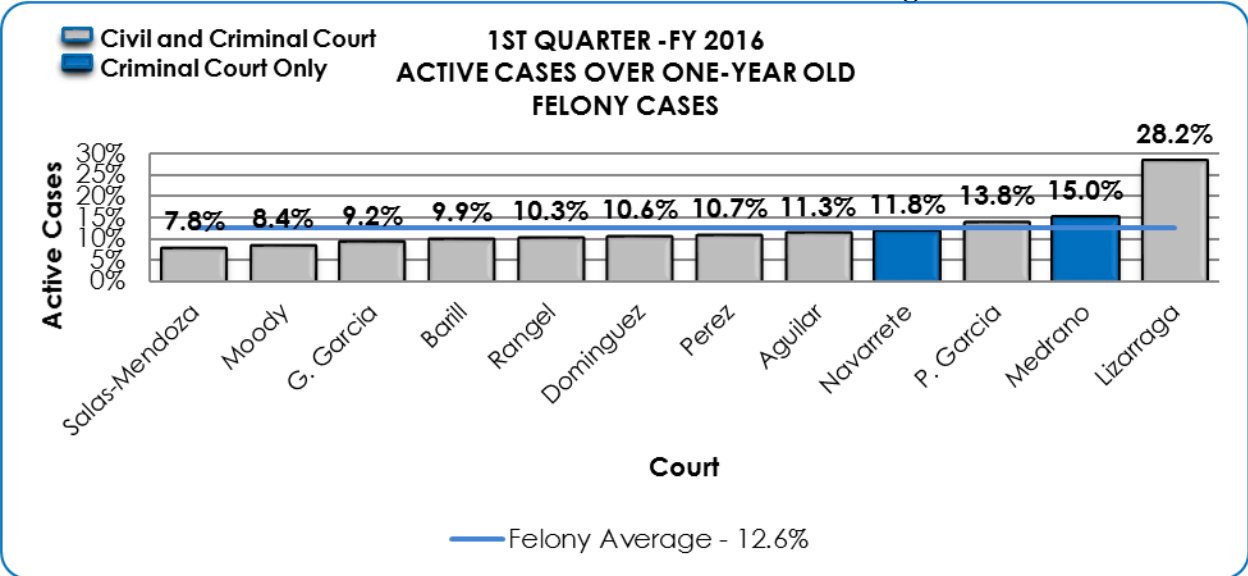
Definition: The age of active cases pending before the court is measured as the number of days from filing until the time of measurement.

Analysis and Interpretation: This measure allows a court to view their progress in achieving a time-to-disposition more in line with the ABA standards. It is a helpful tool in docket management allowing the court to make the necessary adjustments in case administration to achieve a reduction in the time to dispose of a case in line with ABA standards. The first chart displays the percent of active cases that are over a year old for each of the courts. The second chart shows the court-wide average percent of active cases over 365 days for the past quarter. *Note: Fugitives are not included in the data. Cases include what district courts consider open felony cases.*

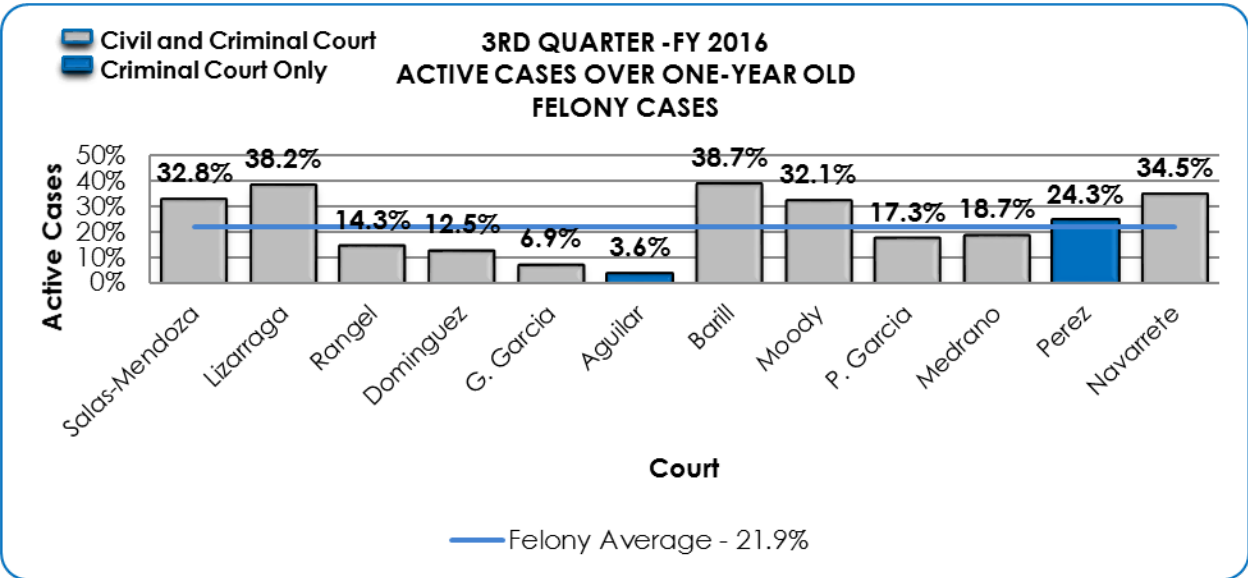
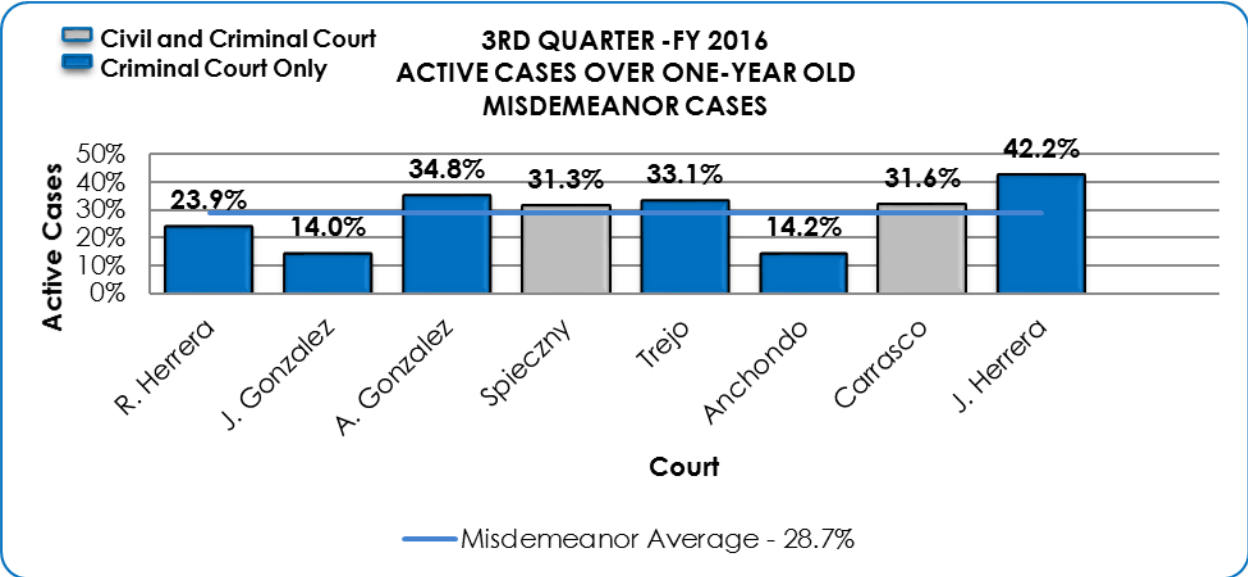
COURT/JUDGE LISTING



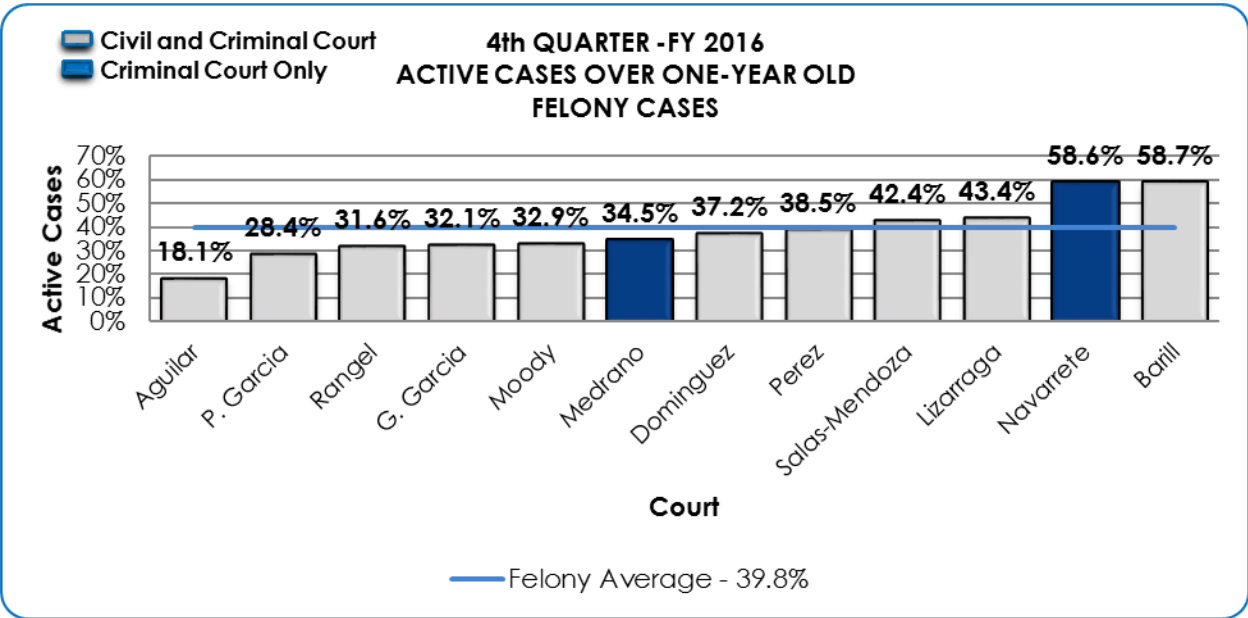
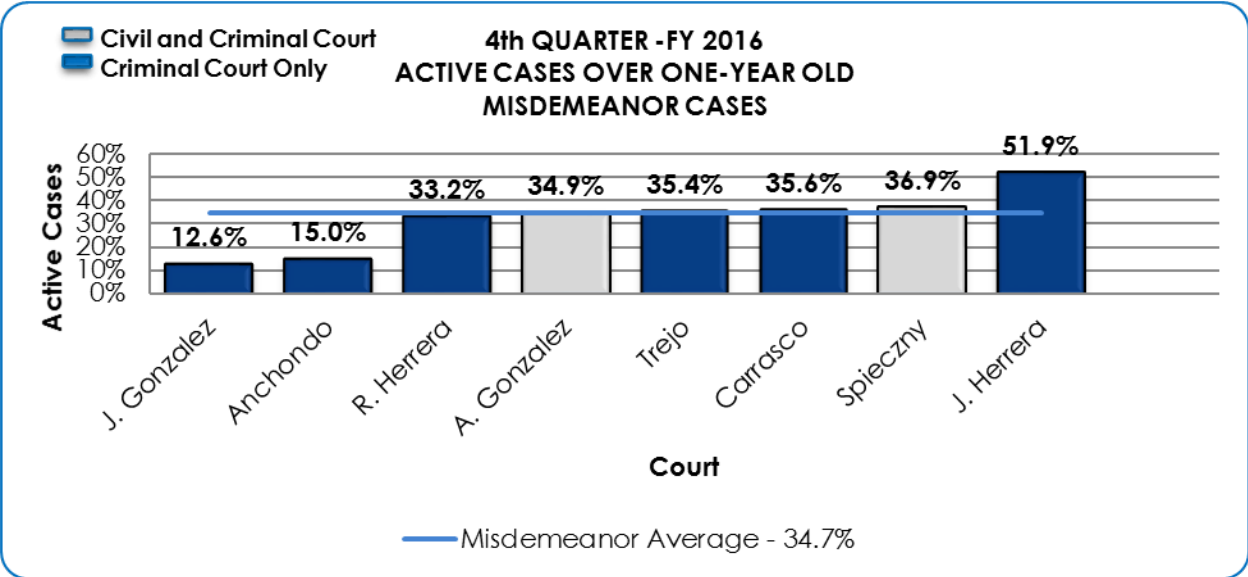
*Judge Barill, Judge P. Garcia, and Judge Anchondo's courts include specialty courts. Future reports will separate specialty courts once judicial software and processes are updated.



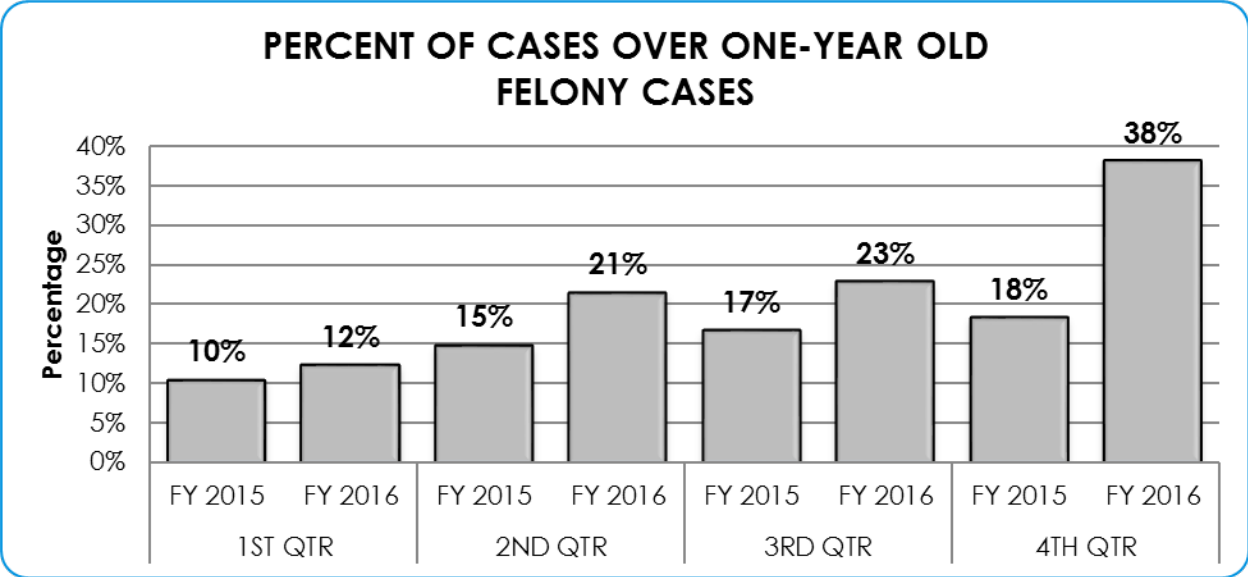
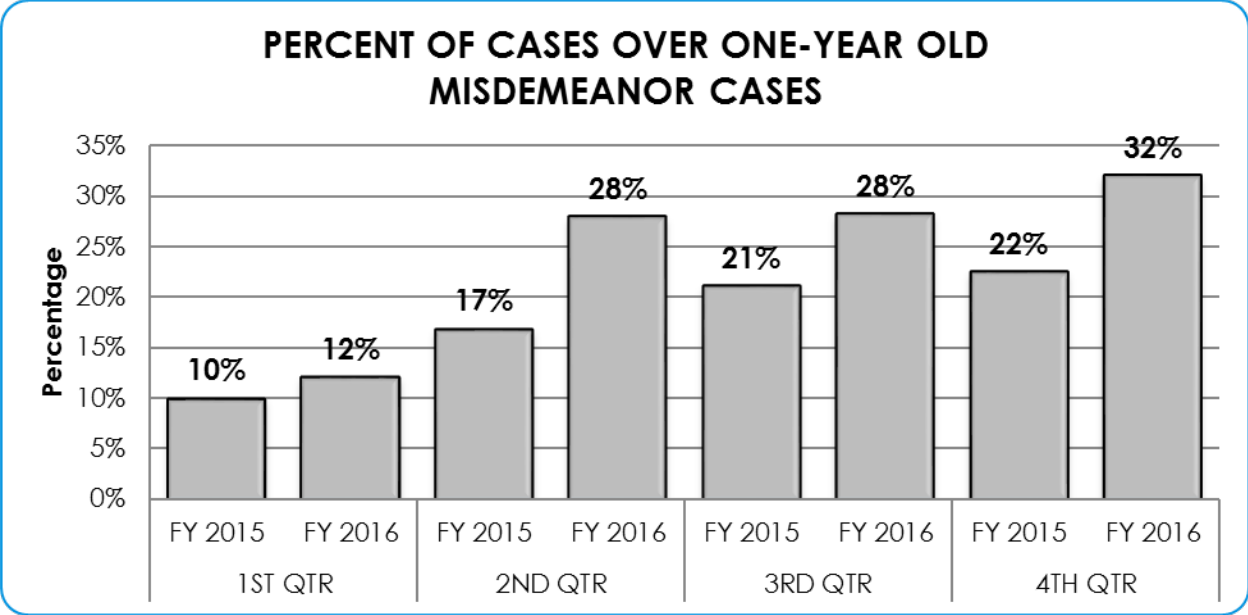
*Judge Barill, Judge P. Garcia, and Judge Anchondo’s courts include specialty courts. Future reports will separate specialty courts once judicial software and processes are updated.



*Judge Barill, Judge P. Garcia, and Judge Anchondo’s courts include specialty courts. Future reports will separate specialty courts once judicial software and processes are updated.



*Judge Barill, Judge P. Garcia, and Judge Anchondo's courts include specialty courts. Future reports will separate specialty courts once judicial software and processes are updated.



**Judge Barill, Judge P. Garcia, and Judge Anchondo’s courts include specialty courts. Future reports will separate specialty courts once judicial software and processes are updated.*